

**EXTERIOR MATERIALS:**

**-ROOFING:**  
CORRUGATED METAL ROOF, COLOR CHARCOAL OR SIMILAR

**-DRIP STOP:**  
A.B.C. ALUMINUM DRIP STOP, COLOR WHITE

**-FASCIA:**  
6" ALUMINUM COLOR SPECIFIED WHITE OR SIMILAR

**-GUTTER**  
GUTTER TYPE VERIFIED W/ OWNER

**-SOFFIT:**  
WHITE ALUMINUM, VENTED EAVES, NON-VENTED GABLES & PORCH CEILING

**-CORNERS:**  
6" COLOR SPECIFIED WHITE OR SIMILAR IN COLOR.

**-CORRUGATED METAL SIDING:**  
CORRUGATED METAL SIDING WHITE OR SIMILAR IN COLOR

**-SURROUNDINGS:**  
ALUMINUM SURROUNDS WHITE OR SIMILAR IN COLOR

**-PORCH POST:**  
AZEK COMPOSITE WOOD COLOR OR SIMILAR

**-WINDOWS & PATIO DOORS:**  
ANDERSEN BRAND, 400 SERIES, WHITE EXTERIOR, WHITE INTERIOR, GRILLS PER PRINT, HARDWARE SELECTED BY OWNER

**-GARAGE DOOR:**  
10' x 8' OHD W/ OPENERS, STANDARD PANELS, INSULATED, STANDARD COLOR GRAY OR SIMILAR

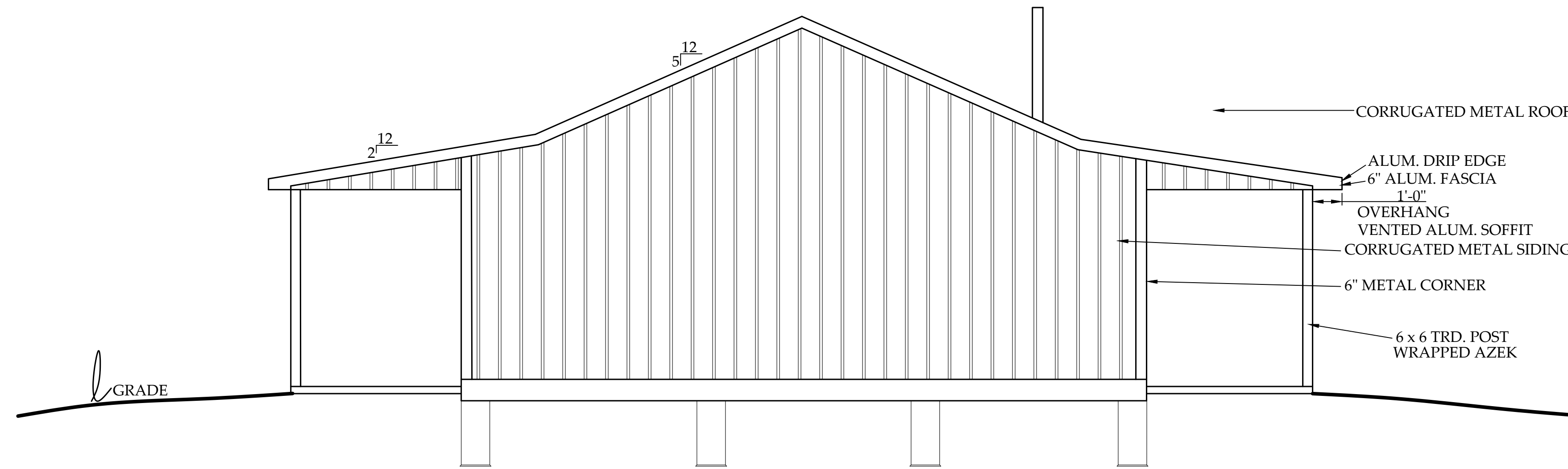
**-FRONT ENTRY DOOR:**  
ANDERSON BRAND, SMOOTH STAR, 56021XJ STYLE, BORED FOR DEADBOLT, PREFINISHED

**-GARAGE ENTRY DOOR:**  
ANDERSON BRAND, PROFILES STEEL, 980HDXC STYLE, BORED FOR DEADBOLT, PREFINISHED

**-GARAGE TO HOUSE DOOR:**  
ANDERSON, PROFILES STEEL, 978HD STYLE, BORED FOR DEADBOLT, PREFINISHED

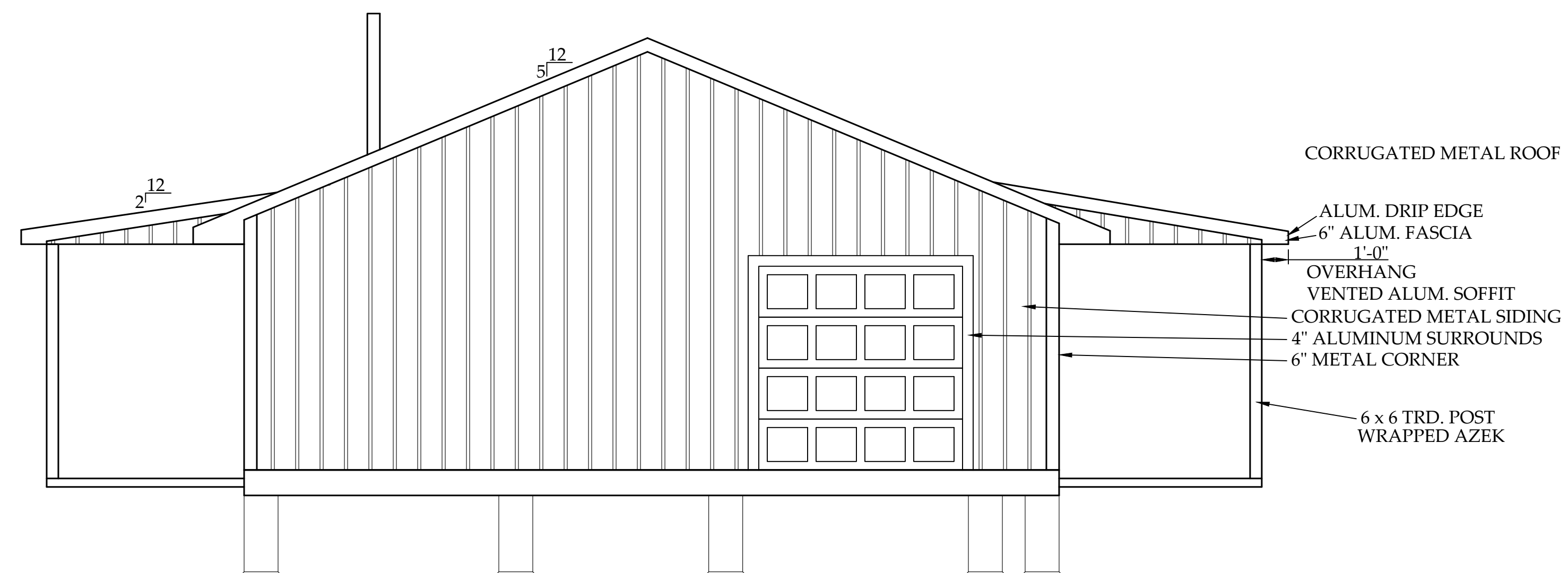
**-ALL EXTERIOR DOOR HARDWARE:**  
LEVER STYLE, SATIN NICKEL FINISH - INTERIOR DOOR HARDWARE FINISH PER FLOOR PLANS

**\*\*ALL MATERIALS TO BE AS SPECIFIED OR EQUIVALENT\*\***



**WEST ELEVATION**

SCALE: 1/4" = 1'-0"



**EAST ELEVATION**

SCALE: 1/4" = 1'-0"