

EXTERIOR MATERIALS:

-ROOFING:
CORRUGATED METAL ROOF, COLOR CHARCOAL OR SIMILAR

-DRIP STOP:
A.B.C. ALUMINUM DRIP STOP, COLOR WHITE

-FASCIA:
6" ALUMINUM COLOR SPECIFIED WHITE OR SIMILAR

-GUTTER
GUTTER TYPE VERIFIED W/ OWNER

-SOFFIT:
WHITE ALUMINUM, VENTED EAVES, NON-VENTED GABLES & PORCH CEILING

-CORNERS:
6" COLOR SPECIFIED WHITE OR SIMILAR IN COLOR.

-CORRUGATED METAL SIDING:
CORRUGATED METAL SIDING WHITE OR SIMILAR IN COLOR

-SURRROUNDS:
ALUMINUM SURROUNDS WHITE OR SIMILAR IN COLOR

-PORCH POST:
AZEK COMPOSITE WOOD COLOR OR SIMILAR

-WINDOWS & PATIO DOORS:
ANDERSEN BRAND, 400 SERIES, WHITE EXTERIOR, WHITE INTERIOR, GRILLS PER PRINT, HARDWARE SELECTED BY OWNER

-GARAGE DOOR:
10' x 8' OHD W/ OPENERS, STANDARD PANELS, INSULATED, STANDARD COLOR GRAY OR SIMILAR

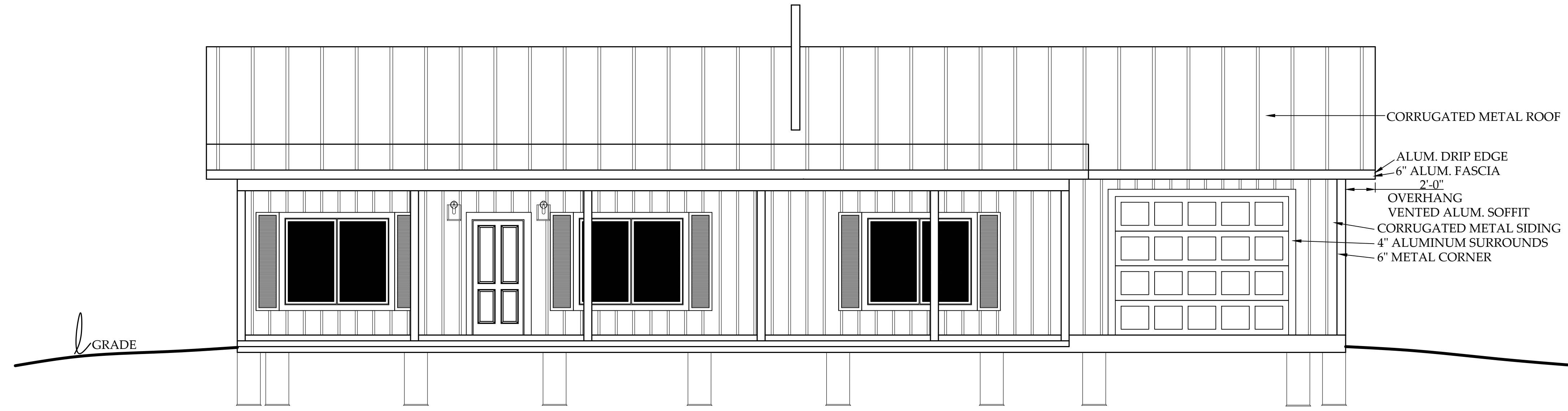
-FRONT ENTRY DOOR:
ANDERSON BRAND, SMOOTH STAR, 56021XJ STYLE, BORED FOR DEADBOLT, PREFINISHED

-GARAGE ENTRY DOOR:
ANDERSON BRAND, PROFILES STEEL, 980HDXC STYLE, BORED FOR DEADBOLT, PREFINISHED

-GARAGE TO HOUSE DOOR:
ANDERSON, PROFILES STEEL, 978HD STYLE, BORED FOR DEADBOLT, PREFINISHED

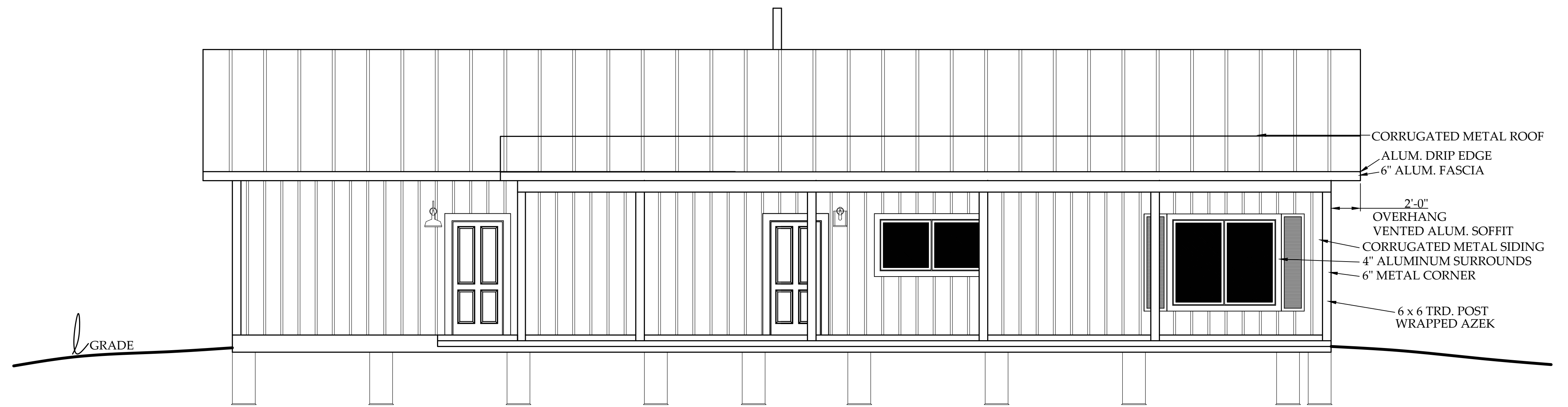
-ALL EXTERIOR DOOR HARDWARE:
LEVER STYLE, SATIN NICKEL FINISH - INTERIOR DOOR HARDWARE FINISH PER FLOOR PLANS

****ALL MATERIALS TO BE AS SPECIFIED OR EQUIVALENT****



NORTH ELEVATION

SCALE: 1/4" = 1'-0"



SOUTH ELEVATION

SCALE: 1/4" = 1'-0"