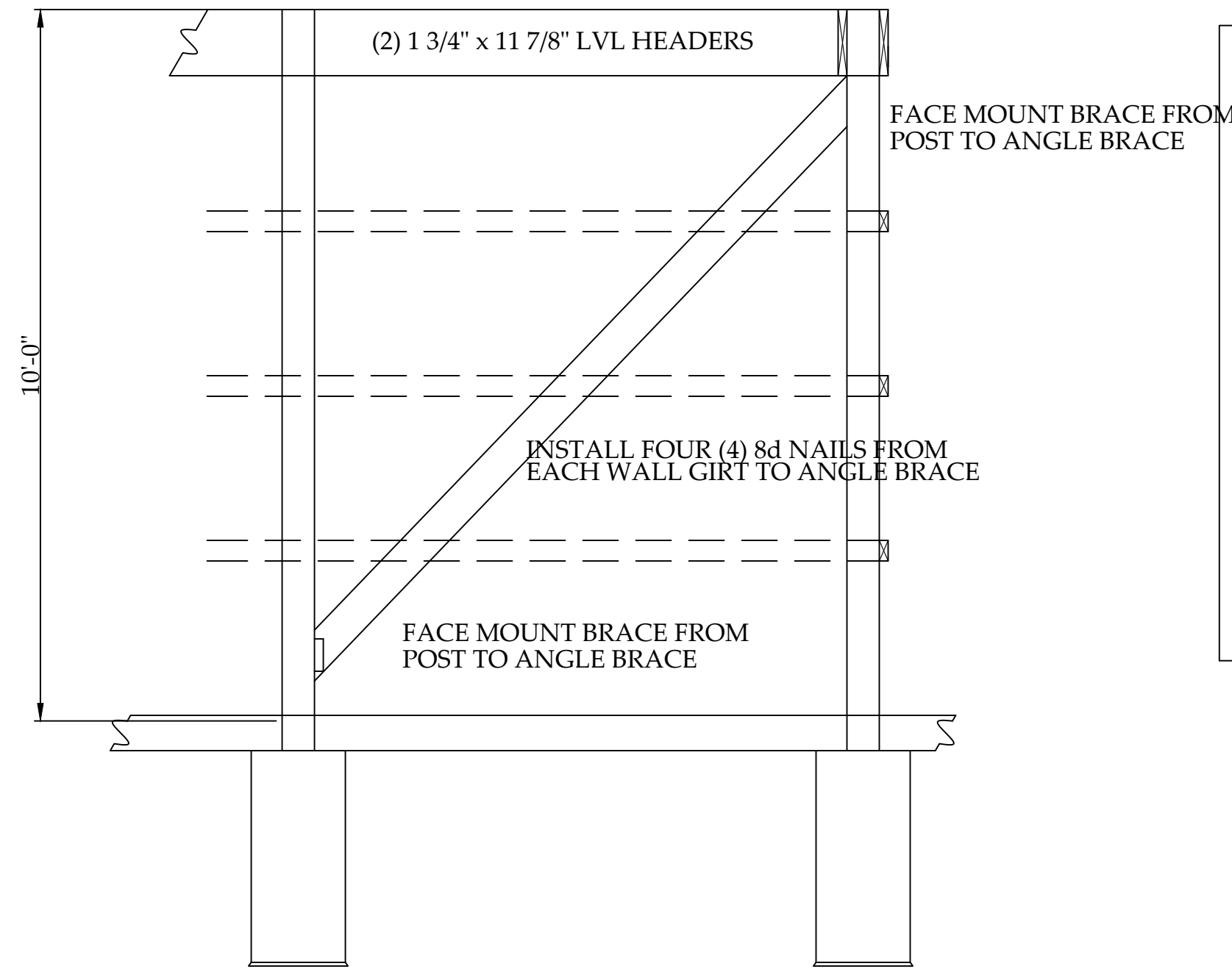
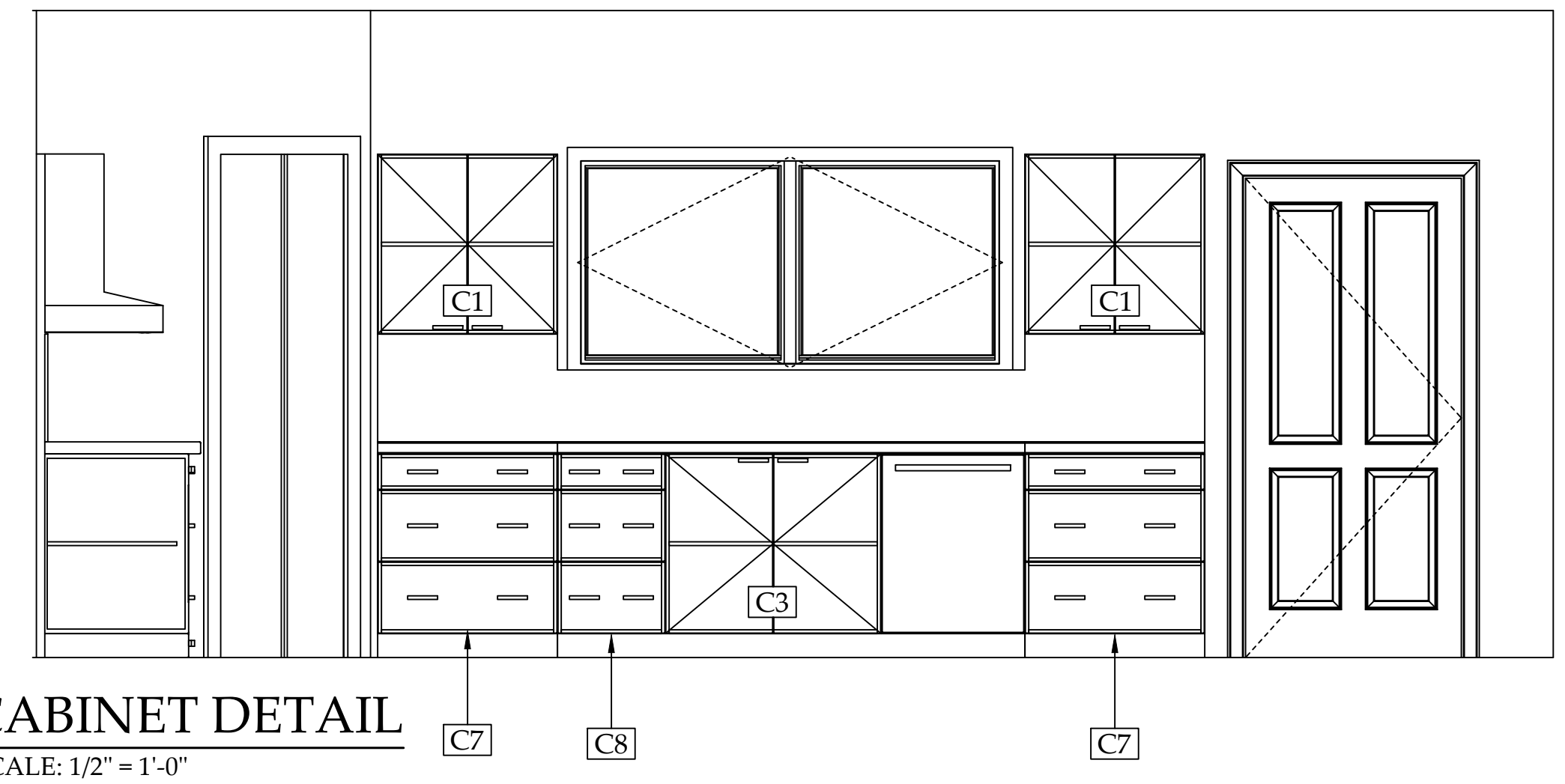
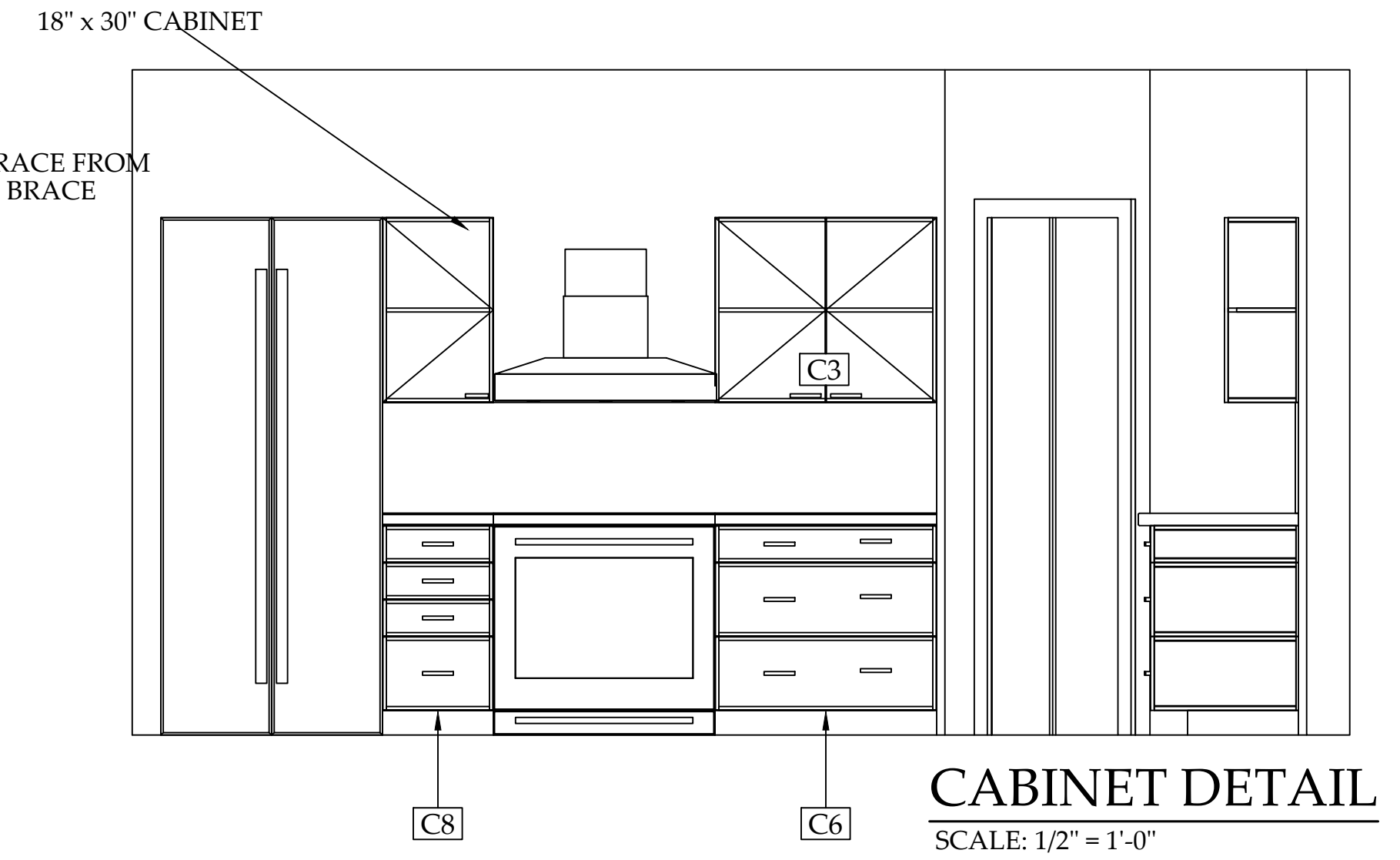


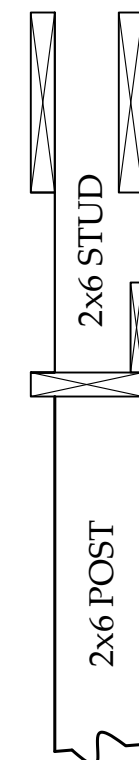
TRUSS CARRIER - TRUSS: CONNECTION DETAIL
SCALE: 1/2" = 1'-0"



TYP. BRACING DETAIL
SCALE: 1/2" = 1'-0"

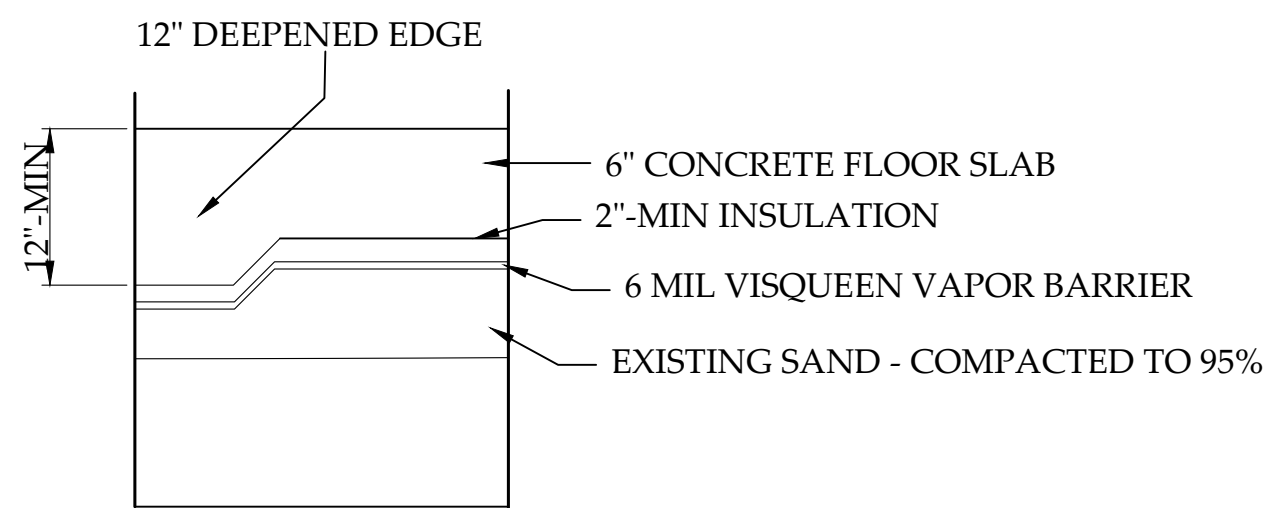


Fastner Schedule:				
1.	1.88" x 11.88" LVL	-to-	6x6 Post	Ten (10) 5/16" x 4" GRK RSS - each Plate
2.	2x6 Truss nailer	-to-	LVL Carrier Plate	Three (3) 10d Nails per plate
3.	Truss	-to-	6x6 Post	Four (4) 8d Nails
4.	2x4 Girt	-to-	6x6 Post	Two (2) 8d Nails
5.	2x8 Skirting	-to-	6x6 Post	Six (6) 10d Nails
6.	2x6 Corner Brace	-to-	6x6 Post	One (1) Galvanized Face Mount Joist Hanger
7.	2x6 Corner Brace	-to-	2x4 Nailer	Four (4) 8d Nails
8.	6x6 Post	-to-	CONCRETE PIER	18" PERMA WET-SET BRACKET PER POST
9.	Truss	-to-	Inside Carrier Plate	One (1) Hurricane Clip
10.	16" COMPOSITE PAD	-to-	BOTTOM CONCRETE PIER	

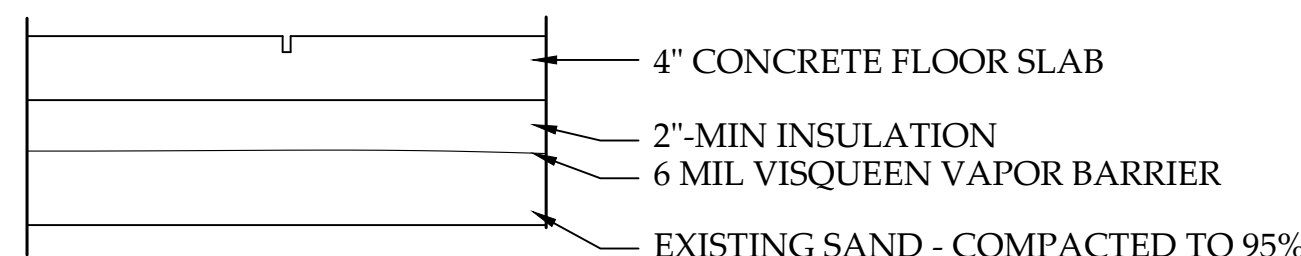


INSTALL (2) 1 3/4" x 11 7/8" LVL HEADERS
INSERT 2x6 STUDS @ 24" O.C.
BOTTOM PLATE: 2x8

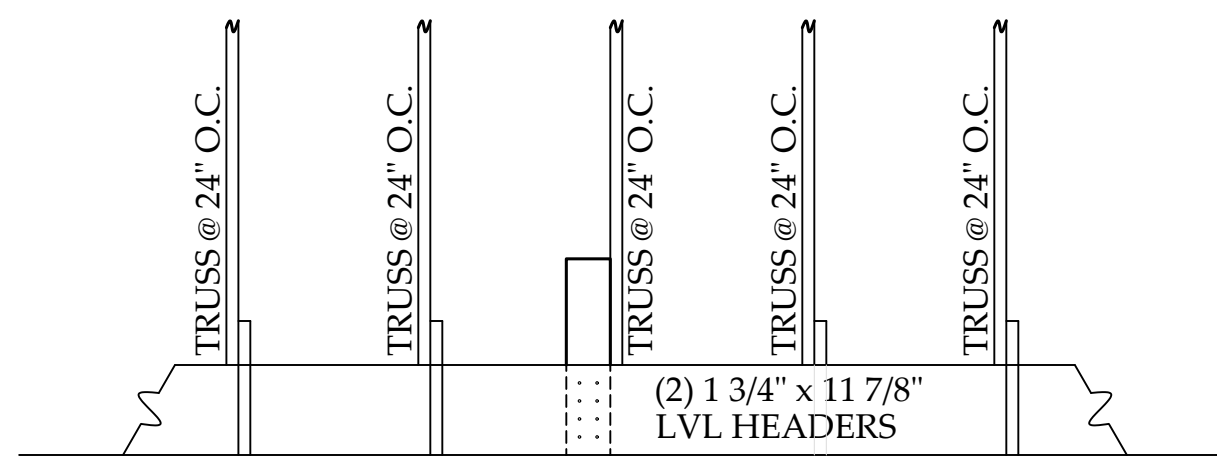
OH DOOR SECTION
SCALE: NTS



SLAB DETAIL
SCALE: NTS



CONTROL JOINT DETAIL
SCALE: 1" = 1'-0"



TOTAL LOADING FROM THE TRUSSES TO EACH 6x6 POST 4800 kips

CAPACITY OF 5/16" x 4 1/2" GRK RSS... 543 kips (FS=3)

NEED 20 GRK FASTENERS/POST

SPACING: 2" FROM TOP - THEN EACH ROW SPACED @ 3" O.C.

FASTENERS TO BE 1 3/4" FROM THE EDGE OF THE 6x6 POST

ATTACH EACH LVL HEADER TO THE 6x6 POST WITH TEN (10) 5/16" x 4 1/2" GRK FASTENERS

TRUSS CARRIER - POST: CONNECTION DETAIL
SCALE: 1/2" = 1'-0"

CABINET SCHEDULE	
C1	30" DBL DOOR 30" TALL
C2	48" DBL DOOR 30" TALL
C3	36" DBL DOOR 30" TALL
C4	36" x 30"
C5	12" x 6" OR 1' PULL-OUT
C6	36" x 6" OR 1' PULL-OUT
C7	30" x 6" OR 1' PULL-OUT
C8	18" x 6" OR 1' PULL-OUT
C9	12" x 30"
C10	60" x 30" DBL DOOR

