



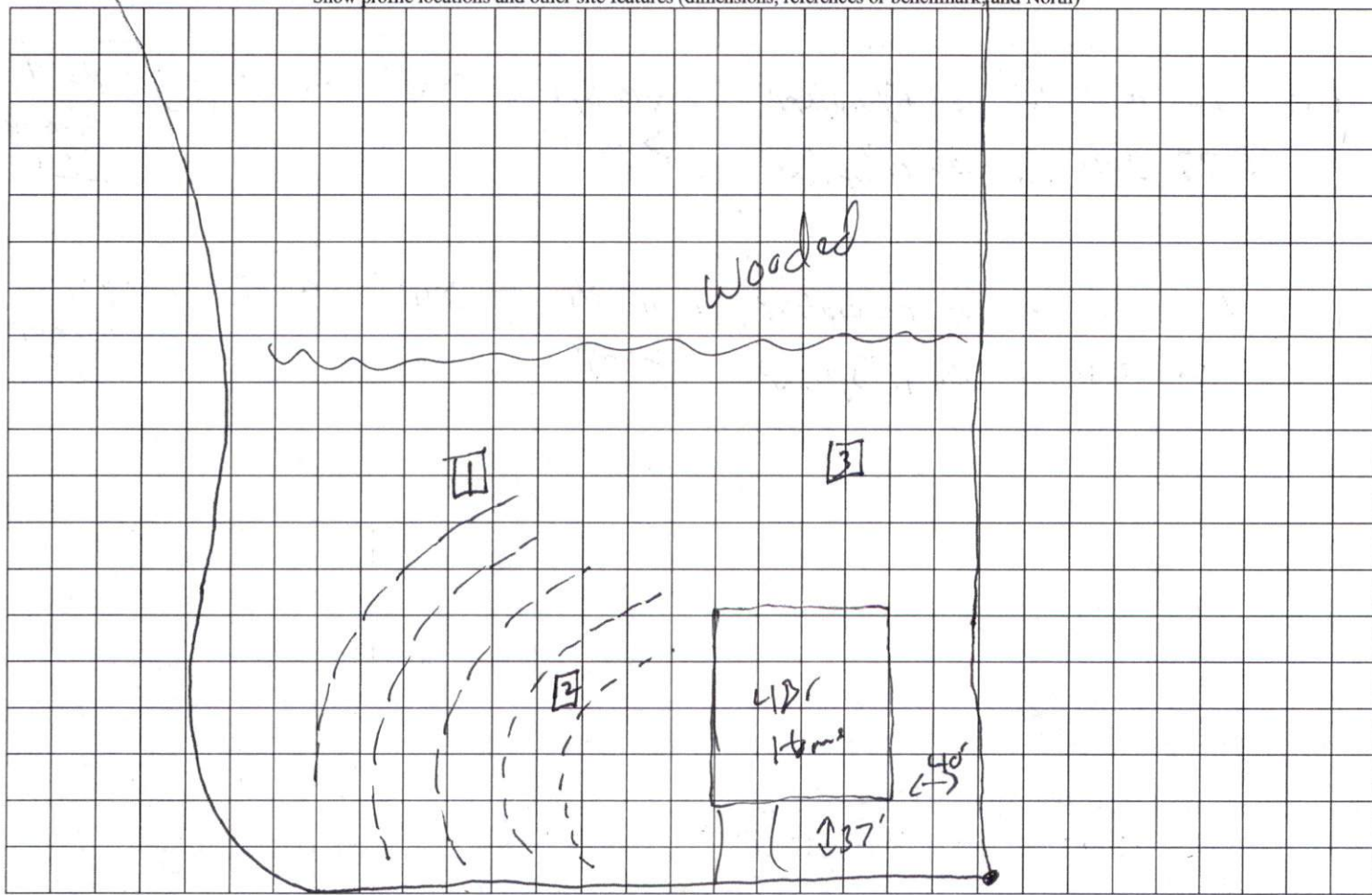
COMMENTS: \_\_\_\_\_

LANDSCAPE POSITIONS	GROUP	TEXTURES	.1955 LTAR	CONSISTENCE MOIST	WET
R-RIDGE	I	S-SAND	1.2 - 0.8	VFR-VERY FRIABLE FR-FRIABLE	NS-NON-STICKY SS-SLIGHTLY STICKY
S-SHOULDER SLOPE L-LINEAR SLOPE		LS-LOAMY SAND			
FS-FOOT SLOPE N-NOSE SLOPE H-HEAD SLOPE	II	SL-SANDY LOAM L-LOAM	0.8 - 0.6	FI-FIRM VFI-VERY FIRM EFI-EXTREMELY FIRM	S-STICKY VS-VERY STICKY NP-NON-PLASTIC SP-SLIGHTLY STICKY
CC-CONCLAVE SLOPE CV-CONVEX SLOPE T-TERRACE FP-FLOOD PLAN		SI-SILT SIL-SILT LOAM CL-CLAY LOAM SCL-SANDY CLAY LOAM			
	IV	SIC-SILTY CLAY C-CLAY SC-SANDY CLAY	0.4 - 0.1		P-PLASTIC VP-VERY PLASTIC

STRUCTURE  
 SG-SINGLE GRAIN  
 M- MASSIVE  
 CR-CRUMB  
 GR-GRANULAR  
 SBK-SUBANGULAR BLOCKY  
 ABK-ANGULAR BLOCKY  
 PL-PLATY  
 PR-PRISMATIC

MINERALOGY  
 SLIGHTLY EXPANSIVE  
 EXPANSIVE

Show profile locations and other site features (dimensions, references or benchmark, and North)



Kingwood