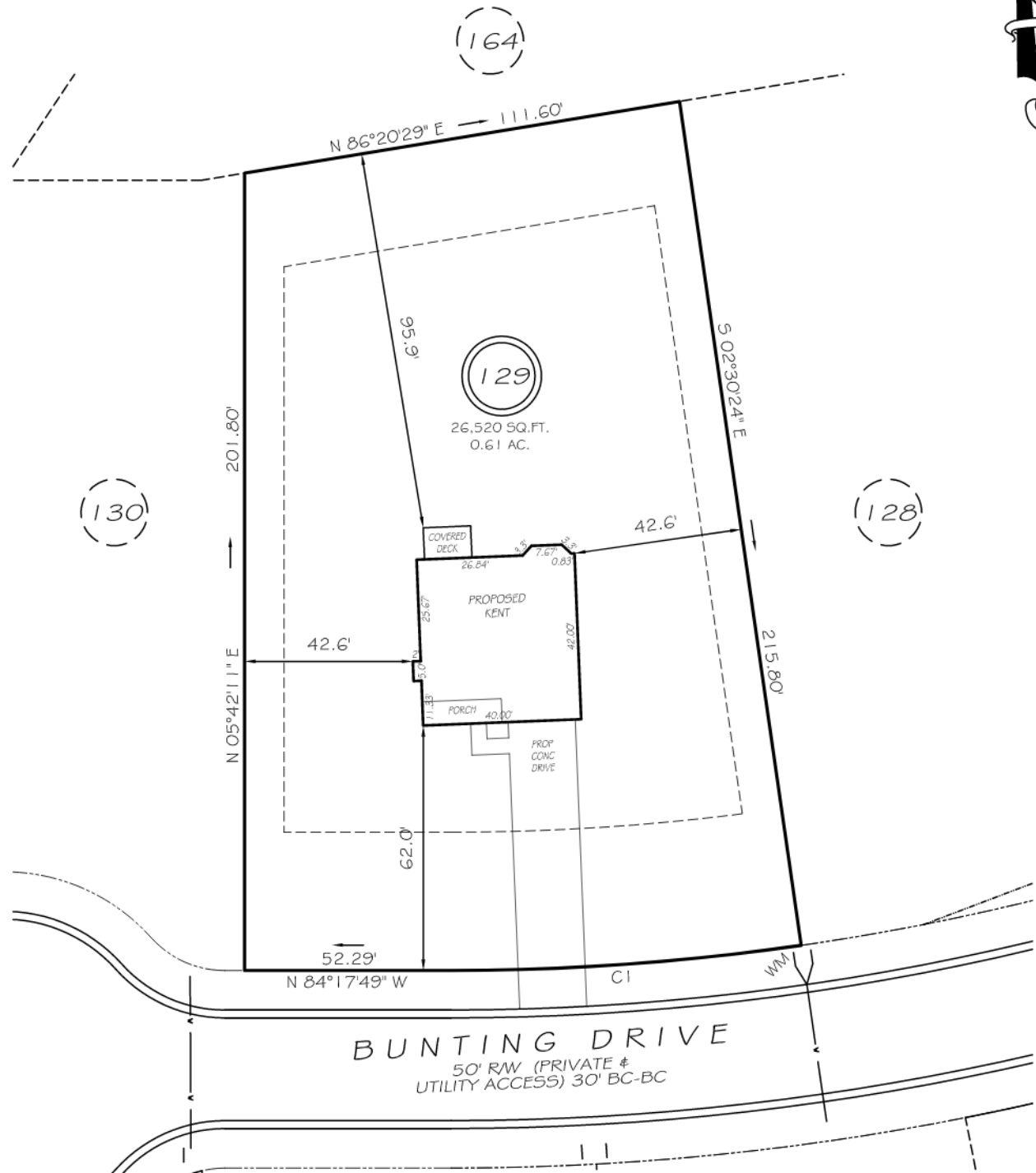


I, MICHAEL P. GRIFFIN, certify that under my direction and supervision this map was drawn from an actual field survey; that the error of closure of the survey as calculated by coordinates is 1: 10,000+; that the area shown hereon was calculated by coordinates.

Witness my hand and seal this day of MONTH 2023.

BK 2022 PG 235
BK 2021 PG 159-161
HARNETT CO. REGISTRY

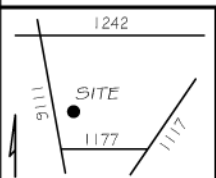


SETBACKS
FRONT 35'
REAR 25'
SIDE 10'
CORNER 20'

C1 R=620.73' L=88.94' S88°24'07"E 88.87'

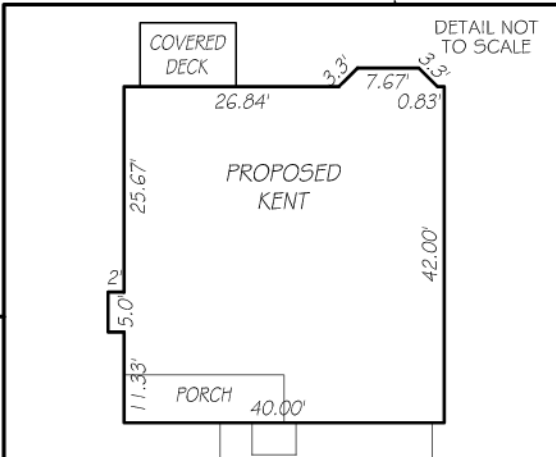
LEGEND

- EIP EXISTING IRON PIPE
- IPS IRON PIPE SET
- R/W RIGHT OF WAY
- N/F NOW OR FORMERLY
- EIS EXISTING IRON STAKE
- FES FLARED END SECTION
- WM WATER METER
- CO CLEAN OUT
- FH FIRE HYDRANT
- CB CATCH BASIN



PRELIMINARY
NOT FOR RECORDATION,
SALES OR CONVEYANCE

SETBACKS
FRONT 35'
REAR 25'
SIDE 10'
CORNER 20'



GLS GRIFFIN LAND SURVEYING, INC.
P.O. BOX 148
FUQUAY-VARINA, NC 27526
(919) - 567-1963

PLOT PLAN
FOR
DREAM FINDERS HOMES, LLC

OAKMONT
LOT 129
BUNTING DRIVE
NORTH CAROLINA
HARNETT COUNTY BARBECUE TOWNSHIP

DRAWN BY **KDF** DATE **4/18/23**
CHECKED BY **MPG** SCALE **1" = 40'**