

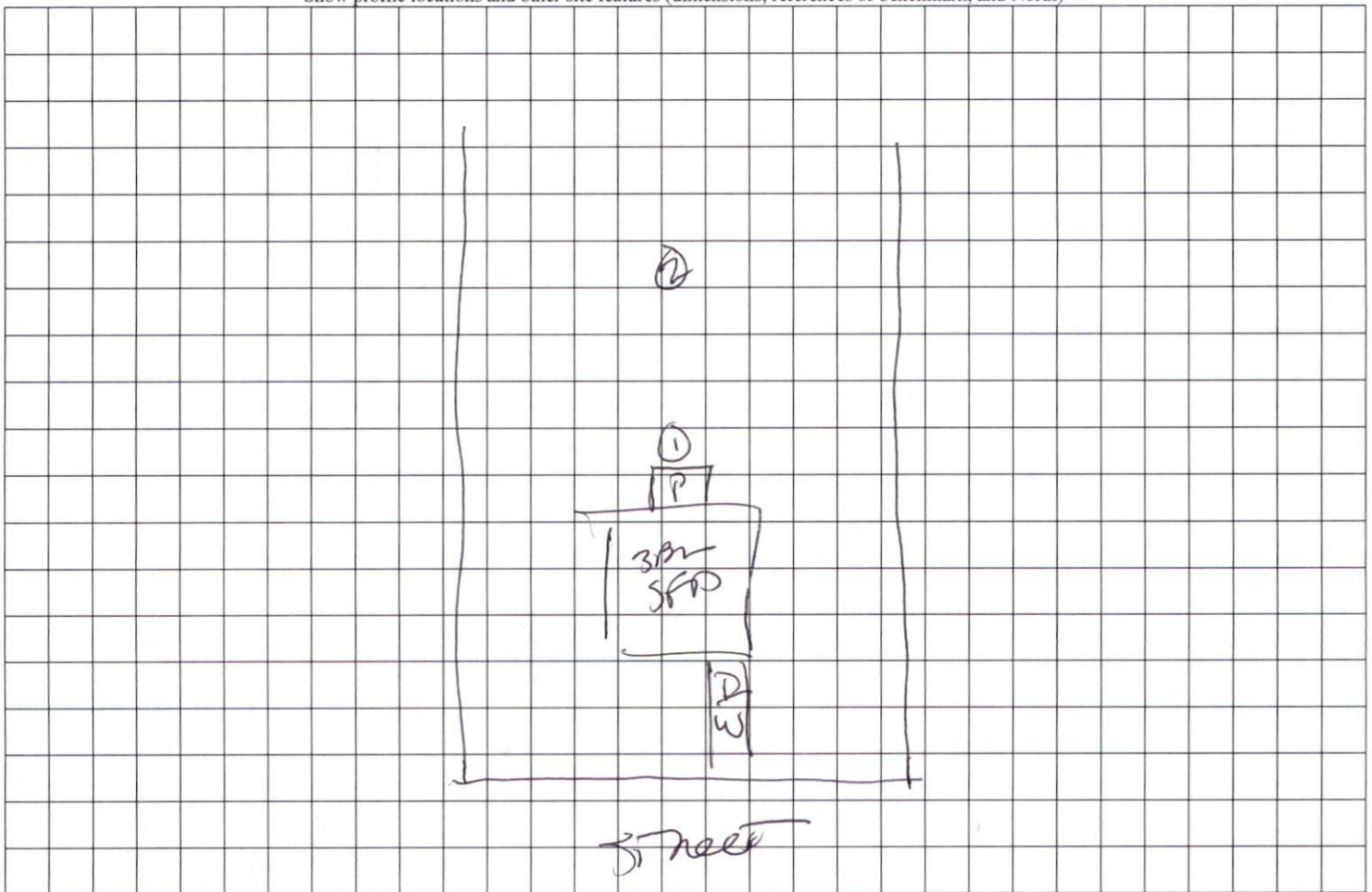
COMMENTS: _____

LANDSCAPE POSITIONS	GROUP	TEXTURES	.1955 LTAR	CONSISTENCE MOIST	WET
R-RIDGE	I	S-SAND	1.2 - 0.8	VFR-VERY FRIABLE FR-FRIABLE	NS-NON-STICKY SS-SLIGHTLY STICKY
S-SHOULDER SLOPE		LS-LOAMY SAND			
L-LINEAR SLOPE	II	SL-SANDY LOAM	0.8 - 0.6	FI-FIRM VFI-VERY FIRM	S-STICKY VS-VERY STICKY
FS-FOOT SLOPE		L-LOAM			
N-NOSE SLOPE	III	SI-SILT	0.6 - 0.3	EFI-EXTREMELY FIRM	NP-NON-PLASTIC SP-SLIGHTLY STICKY P-PLASTIC VP-VERY PLASTIC
H-HEAD SLOPE		SIL-SILT LOAM			
CC-CONCLAVE SLOPE		CL-CLAY LOAM			
CV-CONVEX SLOPE		SCL-SANDY CLAY LOAM			
T-TERRACE	IV	SIC-SILTY CLAY	0.4 - 0.1		
FP-FLOOD PLAN		C-CLAY			
		SC-SANDY CLAY			

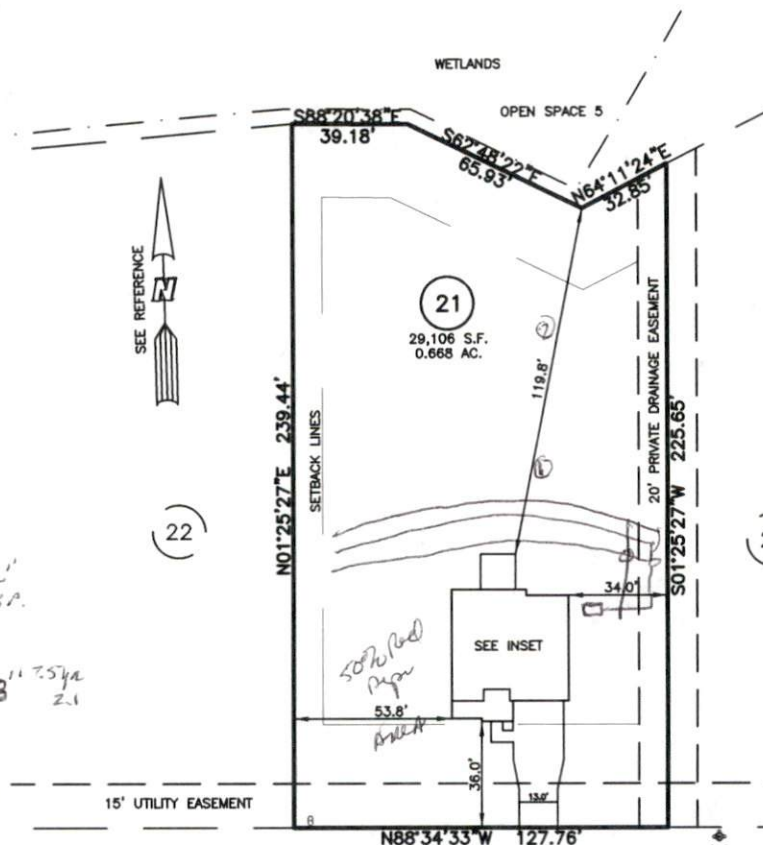
STRUCTURE
 SG-SINGLE GRAIN
 M-MASSIVE
 CR-CRUMB
 GR-GRANULAR
 SBK-SUBANGULAR BLOCKY
 ABK-ANGULAR BLOCKY
 PL-PLATY
 PR-PRISMATIC

MINERALOGY
 SLIGHTLY EXPANSIVE
 EXPANSIVE

Show profile locations and other site features (dimensions, references or benchmark, and North)



PLOT PLAN FOR
NEW HOME INC.
 102 SALEM VILLAGE DRIVE
 LOT 21, WOODBRIDGE SOUTH
 BUCKHORN TOWNSHIP, HARNETT COUNTY, NORTH CAROLINA



LEGEND

- ⊠ AIR CONDITIONER
- BC BACK OF CURB
- BFP BACK FLOW PREVENTER
- ⊙ CLEANOUT
- ⊞ CURB INLET
- DHS DRILL HOLE SET
- ECM EXISTING CONCRETE MONUMENT
- EDH EXISTING DRILL HOLE
- EIS EXISTING IRON STAKE
- EIP EXISTING IRON PIPE
- EM ELECTRIC METER
- EPK EXISTING PK NAIL
- ES ELECTRIC STUB
- ▽ FLARED END SECTION
- ⊕ FIRE HYDRANT
- ⊙ FIBER OPTIC PEDESTAL
- ⊙ GAS METER
- GUY
- INV. INVERT
- IPS IRON PIPE SET
- IRS IRON ROD SET
- ⊞ LIGHT POLE
- MNS MAGNETIC NAIL SET
- ⊙ MANHOLE SANITARY SEWER
- ⊙ MANHOLE STORM SEWER
- OHW OVERHEAD WIRES
- PKS PK NAIL SET
- PNS POINT NOT SET
- RSS RAIL ROAD SPIKE
- ⊙ TELEPHONE PEDESTAL
- ⊙ TRANSFORMER
- ⊙ CABLE TV PEDESTAL
- ⊙ UTILITY POLE
- ⊙ WATER METER
- ⊙ WATER VALVE
- ⊙ YARD INLET
- () FIELD MEASUREMENT

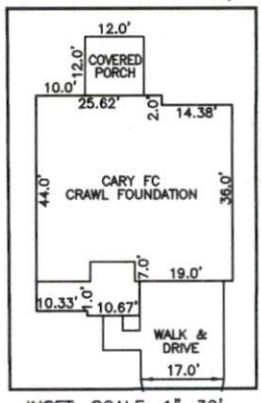
1-LO-195L P2G1
 19-425CL P2G1-5P.
 2-0-205L 11.754A
 20-425CL 2.1

SALEM VILLAGE DRIVE
 50' PUBLIC R/W & UTILITY EASEMENT

IMPERVIOUS SURFACES	
HOUSE	1,630 S.F.
WALK & DRIVE	710 S.F.
PORCH	150 S.F.
TOTAL	2,490 S.F.
LOT AREA	29,106 S.F.
PERCENT IMPERVIOUS	8.5%

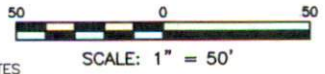
SETBACK INFO

FRONT:	35'
REAR:	25'
SIDES:	10'
CORNER SIDE:	20'



INSET: SCALE: 1" = 30'

REFERENCES:
 P.B. 2023, PGS 92-95



- NOTES**
- THIS SURVEY SUBJECT TO ANY FACTS THAT MAY BE DISCLOSED BY A FULL AND ACCURATE TITLE SEARCH.
 - THIS MAP MAY NOT BE A CERTIFIED SURVEY AND HAS NOT BEEN REVIEWED BY A LOCAL GOVERNMENT AGENCY FOR COMPLIANCE WITH ANY APPLICABLE LAND DEVELOPMENT REGULATIONS AND HAS NOT BEEN REVIEWED FOR COMPLIANCE WITH RECORDING REQUIREMENTS FOR PLATS.

PLOT PLAN
 PRELIMINARY PLAT- NOT FOR RECORDATION,
 CONVEYANCE OR SALES

DATE: APRIL 25, 2023

RWK, PA
 engineering ~ surveying
 Corporate License: C-1771
 101 W. Main St., Suite 202
 Garner, NC 27529
 Phone (919) 779-4854
 Fax (919) 779-4056

REV CODE: 1.FLIP, 2.PLAN, 3.ROTATE, 4.MOVE, 5.SS
 6.SEVERAL OF ABOVE, 7.LAND FEATURE, 8. OTHER

F.B. _____