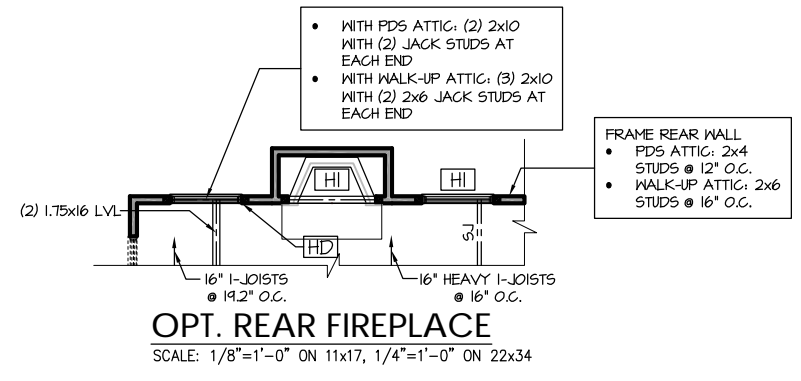
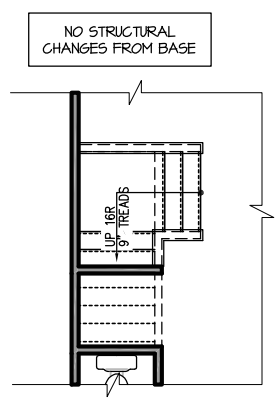


Engineers seal applies only to structural components on this document.
Seal does not include construction means, methods, techniques, sequences, procedures or safety precautions.
Any deviations or discrepancies on plans are to be brought to the immediate attention of Southern Engineers. Failure to do so will void Southern Engineer's liability.
Use of these plans constitutes approval of terms & conditions as defined in the customer agreement.

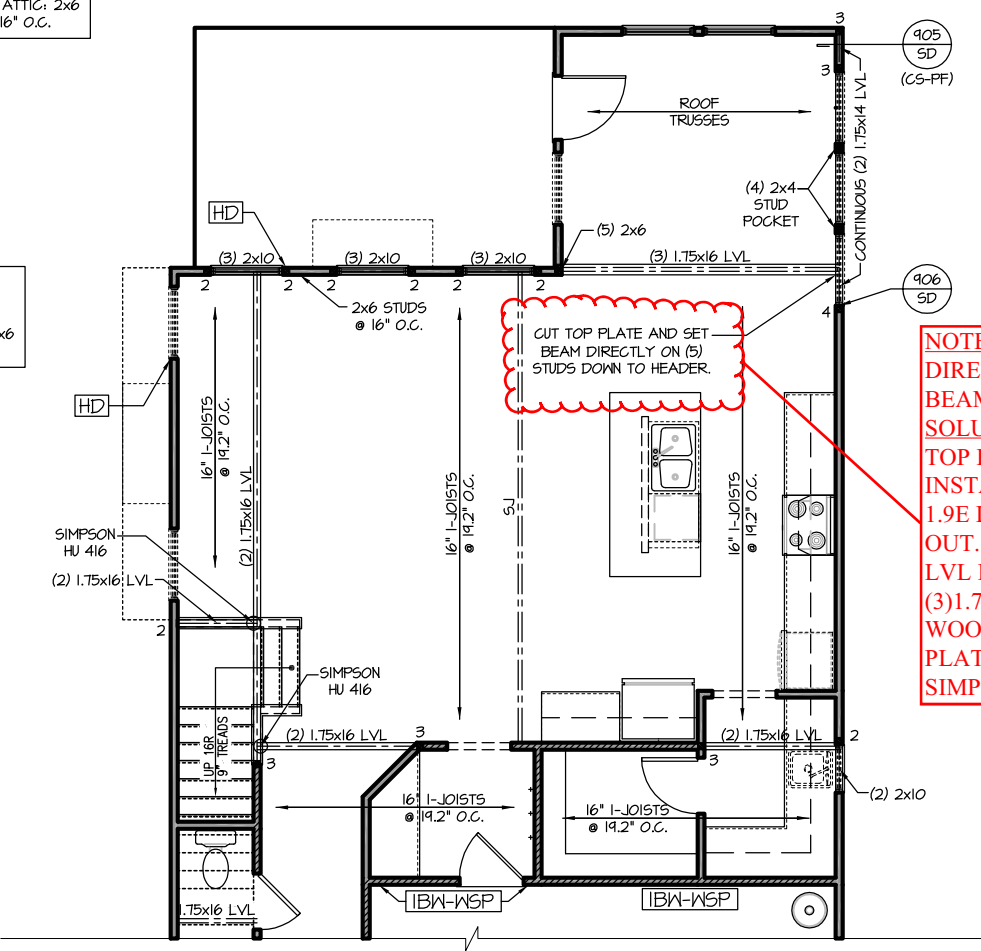
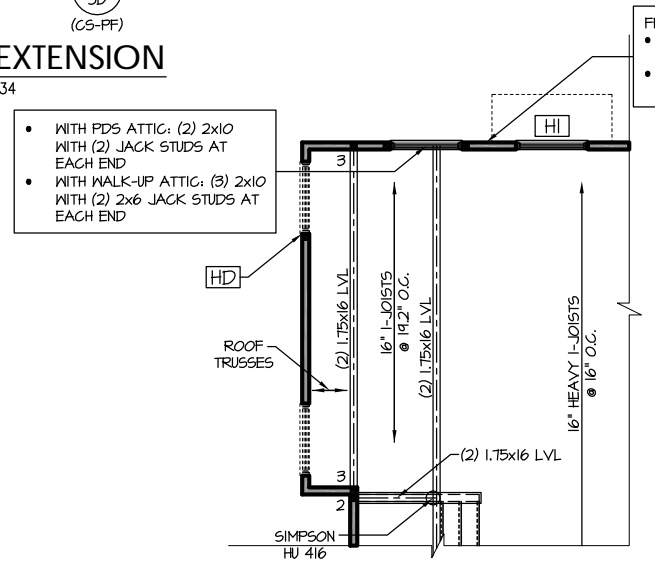
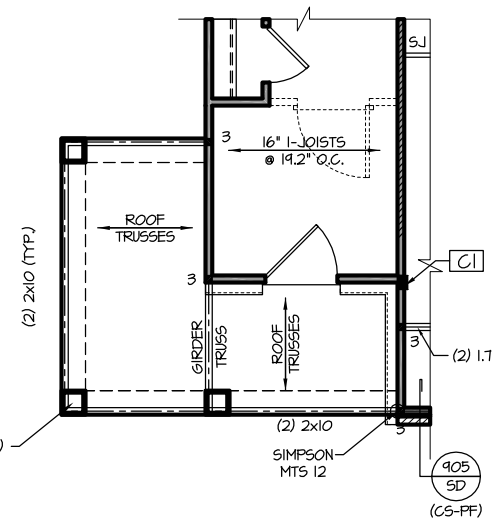
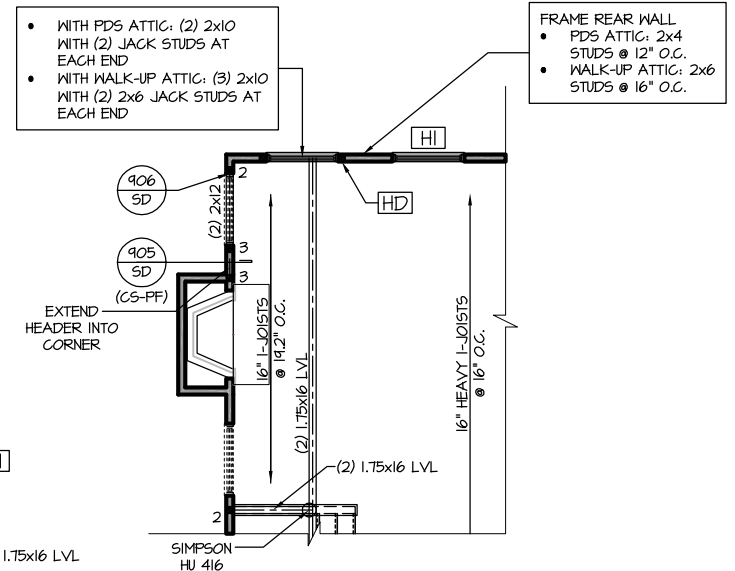
Southern Engineers, P.A.
3716 Benson Drive, Raleigh, NC 27609
Phone: (919) 878-1617
License: C-4772
www.southernengineers.com

NEW HOME, INC.

SMITHFIELD
Garage Right



OPT. PET PALACE
SCALE: 1/8"=1'-0" ON 11x17, 1/4"=1'-0" ON 22x34



NOTED ISSUE: HEADER WAS SET DIRECTLY BELOW TOP PLATES AND BEAM IS BEARING ON TOP PLATES. SOLUTION: CUT OUT 1'-0" SEGMENT OF TOP PLATES BELOW END OF BEAM. INSTALL 3.5"X3" PLATE OF 1.5E LSL OR 1.9E LVL OR BETTER AT 1'-0" LONG CUT OUT. ATTACH NEW LVL/LSL PLATE TO LVL HEADER ON EACH SIDE OF (3) 1.75X16 LVL BEAM WITH (2) 1/4"x5" WOOD SCREWS. ATTACH LVL/LSL PLATE TO TOP PLATES AT ENDS W/ A SIMPSON LTP6 PLATE.

Project #: 21-3366-C (Lot 22)
Location: Lot 22, Woodbridge South
Date: 7-31-23
Page: 1 of 1

HI

- WITH PDS ATTIC: (2) 2x12 WITH (2) JACK STUDS AT EACH END
- WITH WALK-UP ATTIC: (3) 2x10 WITH (2) 2x6 JACK STUDS AT EACH END

CI

- 3.5"x7" PSL/LVL COLUMN. INSTALL A 2x4 STUD ON EACH SIDE OF COLUMN AND ATTACH WITH (2) ROWS OF 12d NAILS @ 6" O.C.