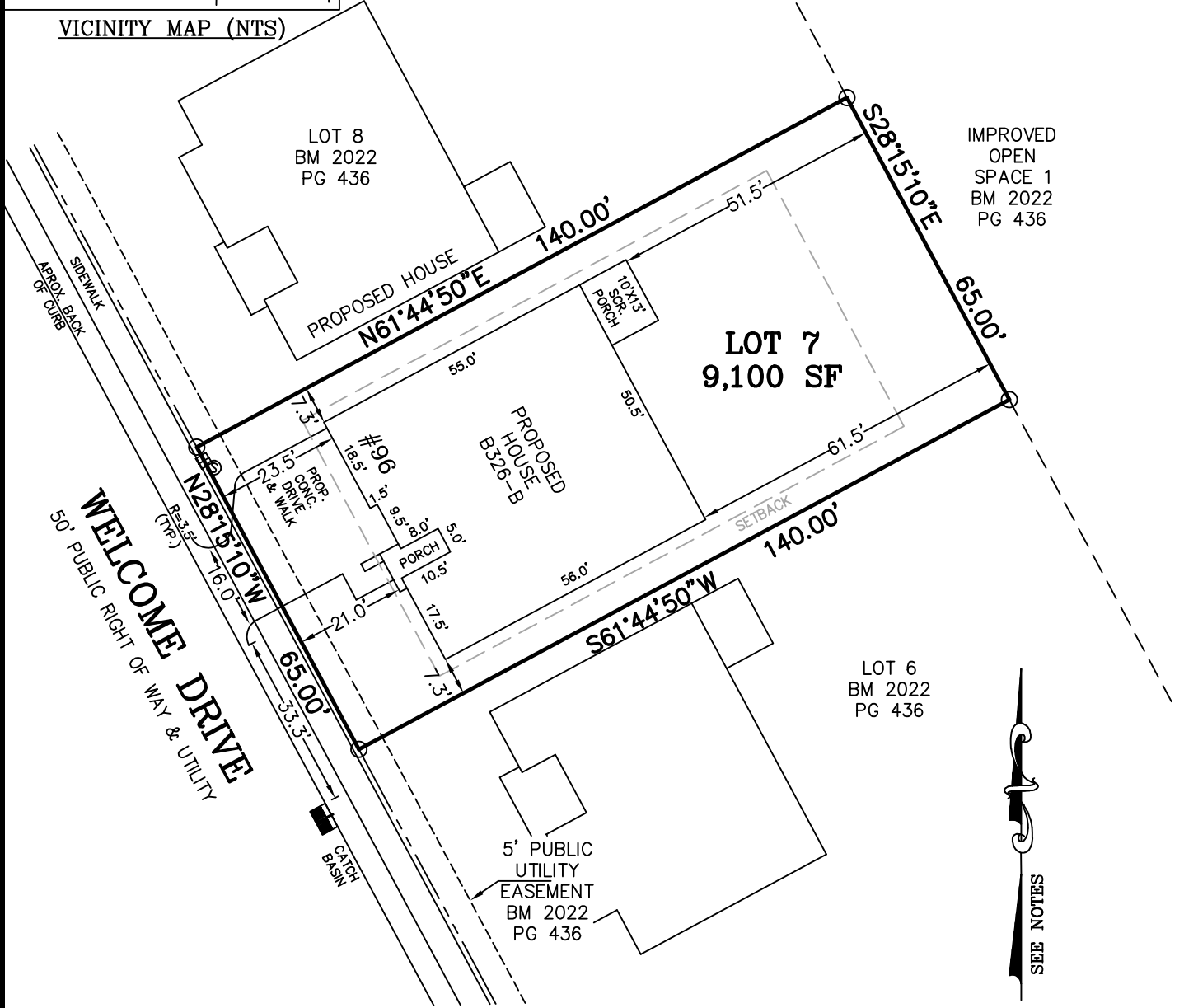


LEGEND

- MATHEMATICAL POINT
- CONTROL CORNER
- ▣ WATER METER
- ⊙ SEWER CLEAN OUT
- ⊗ FIRE HYDRANT

VICINITY MAP (NTS)



IMPROVED
OPEN
SPACE 1
BM 2022
PG 436

LOT 6
BM 2022
PG 436



NOTES:

- REFERENCE HARNETT CO. BM 2022, PG 434-448 FOR BOUNDARY INFORMATION, NORTH INDEX & TIE LINES TO SUBDIVISION CONTROL CORNERS.
- ZONED: RA-30, RA-40, & CONSERVATION.
- SETBACKS:
43' LOT WIDTH:
FRONT YARD-20', SIDE YARD-4' & 4' OR 0' & 8', REAR YARD-20', CORNER YARD-12'.
>43' LOT WIDTH:
FRONT YARD-20', SIDE YARD-5', REAR YARD-20', CORNER YARD-12'.
- PROPERTY IS NOT LOCATED WITHIN A SPECIAL FLOOD HAZARD AREA AS SCALED FROM THE NFIP FIRM No. 3720065500L (EFFECTIVE DATE: JULY 19, 2022).

MAXIMUM ALLOWABLE IMPERVIOUS-4,000 SF

TOTAL ESTIMATED IMPERVIOUS-3,584 SF	
	SQ. FT.
SITE	
HOUSE	2,801
DRIVEWAY	606
LEAD WALK	38
SCR. PORCH	130
A/C PAD	9

PERMIT PLAN LOT: 7

SERENITY SUBDIVISION, PHASE 1
HECTORS CREEK TOWNSHIP, HARNETT COUNTY, NC

SURVEYED FOR
DAVID WEEKLEY HOMES
1901 N. HARRISON AVENUE, SUITE 200
CARY, NC 27513



MSS LAND CONSULTANTS, PC
"Committed to Total Quality Service"
Firm License: C-2070
EST. 1998

6118 St. Giles St Phone (919) 510-4464
(Suite E) Fax (919) 510-9102
Raleigh, NC 27612 Email: gowersw@mssland.com

I HEREBY CERTIFY THAT THE BUILDING WILL LIE WHOLLY ON THE LOT. THIS PLAT IS OF AN EXISTING PARCEL OF LAND. THIS IS NOT A SURVEY AND NOT FOR RECORDATION PURPOSES.

PRELIMINARY PLAN

WADE A. GOWERS, PLS L-4639

O:_DWHOMES\IDWH-22-02.dwg (7.dwg - Layout1, 3/27/2023 10:59:06 AM, cawford.c, 1:1)