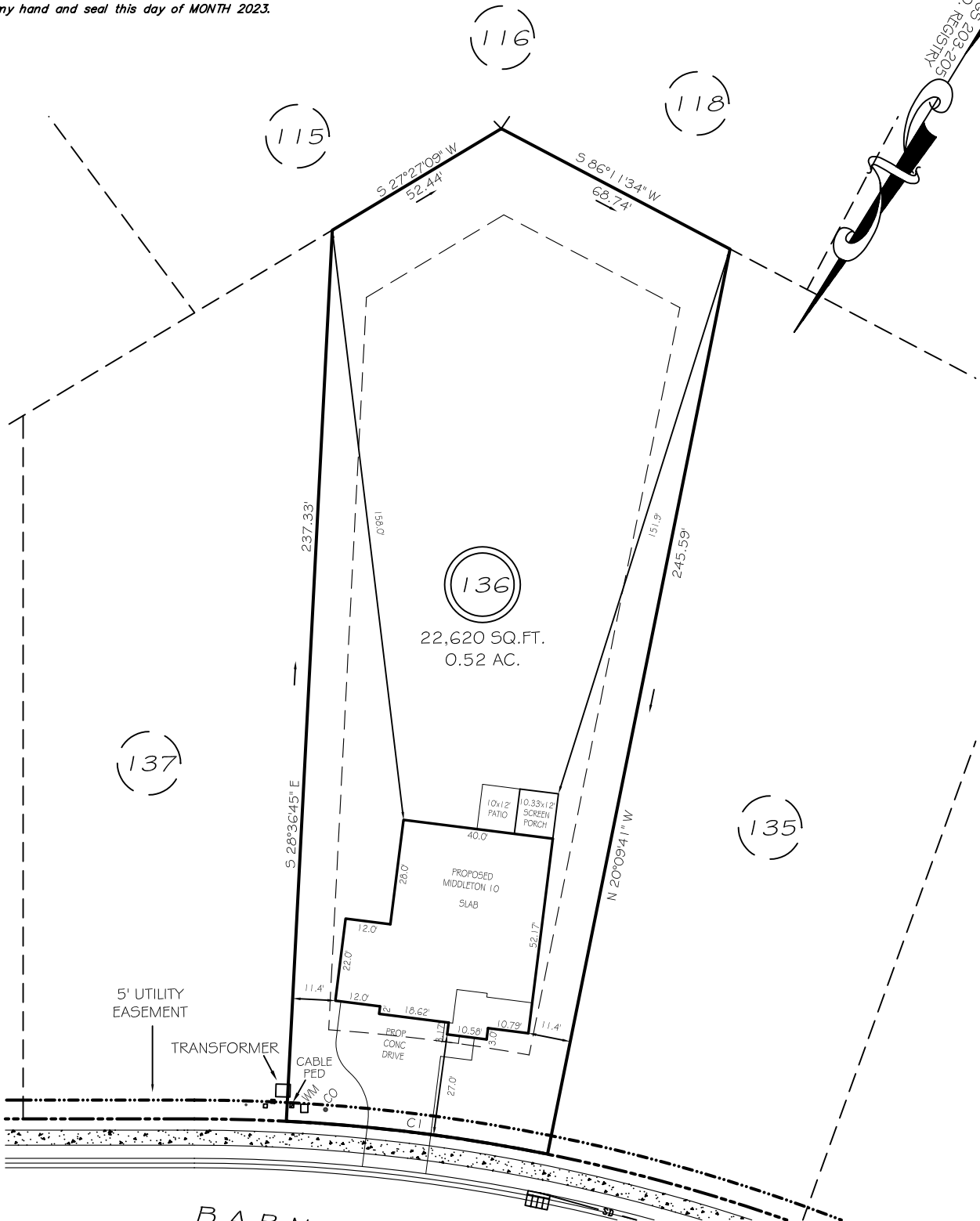


I, MICHAEL P. GRIFFIN, certify that under my direction and supervision this map was drawn from an actual field survey; that the error of closure of the survey as calculated by coordinates is 1: 10,000+; that the area shown hereon was calculated by coordinates.  
 Witness my hand and seal this day of MONTH 2023.

BK 2022 RES 203-205  
 HARNETT CO. REGISTRY



BARN DOOR DRIVE  
 50' PUBLIC RW & UTILITY EASEMENT

SETBACKS

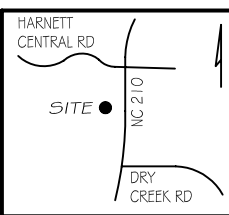
FRONT	25'
REAR	20'
SIDE	10'
CORNER SIDE	20'

CI R=475.00' L=70.06' N65°36'47"E 70.00'

LEGEND

**PRELIMINARY**  
 NOT FOR RECORDATION,  
 SALES OR CONVEYANCE

EIP	EXISTING IRON PIPE	FES	FLARED END SECTION
IPS	IRON PIPE SET	WM	WATER METER
R/W	RIGHT OF WAY	CO	CLEAN OUT
N/F	NOW OR FORMERLY	FH	FIRE HYDRANT
EIS	EXISTING IRON STAKE	CB	CATCH BASIN



**GRIFFIN LAND SURVEYING, INC.**  
 P. O. BOX 148  
 FUQUAY-VARINA, NC 27526  
 (919) - 567 - 1963

**PLOT PLAN**  
 FOR  
**DRB HOMES**  
 THE FARM AT  
 NEILLS CREEK  
 LOT 136

DRAWN BY <b>KDF</b>	DATE <b>4/3/23</b>
CHECKED BY <b>MPG</b>	SCALE <b>1" = 40'</b>

57 BARN DOOR DRIVE  
 NORTH CAROLINA  
 HARNETT COUNTY NEILL'S CREEK TWSHP