

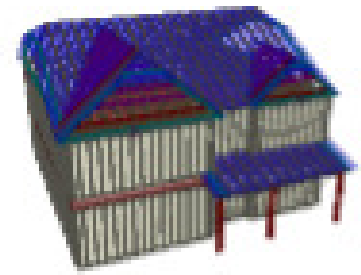
General Notes:
 - Per ANSI/TPI 1-2002 all "Truss to Wall" connections are the responsibility of the Building Designer, not the Truss Manufacturer.

- Dimensions are Feet-Inches- Sixteenths.
 - Trusses are to be 24" o.c. unless noted otherwise (U.N.O.)
 - Trusses are not designed to support brick U.N.O.
 - Do not cut or modify trusses without first contacting Builders FirstSource.
 - Immediately contact Builders FirstSource if trusses are damaged.

Connection Notes:
 - All hangers are to be Simpson or equivalent U.N.O.
 - Use Manufacturer's specifications for all hanger connections U.N.O.
 - Use 10d x 1 1/2" Nails in hanger connections to single ply roof girder trusses.

Floor Notes:
 - Shift truss as required to avoid plumbing traps.
 - Installation Contractor and/or Field Supervisor are to verify all dimensions, trap locations, and options prior to installation

Dimension Notes:
 - Drawing not to scale. Do not scale dimensions



Hanger List		All Tie Downs H2.5T Unless noted
6	LUS24	U L4
15	HTU26	M L8
2	LGT2	-

Special Items List

Misc Material

Chesapeake			
6260	Elev:	A	
Farm Neills Creek			
Harnett County	NC	Lot:	128
Appwright #			
Full Front Porch/Rear Covered Porch/Garage Left			
Permit (3489000)			
Code: IRC 2015			
Loading:			
T.C.L.L.		20	
T.C.D.L.		10	
T.C.L.L.		0	
B.C.D.L.		10	
Designed By: CFC			
Layout: A.FPRCP-R			
L/O Date: 04/14/2023			

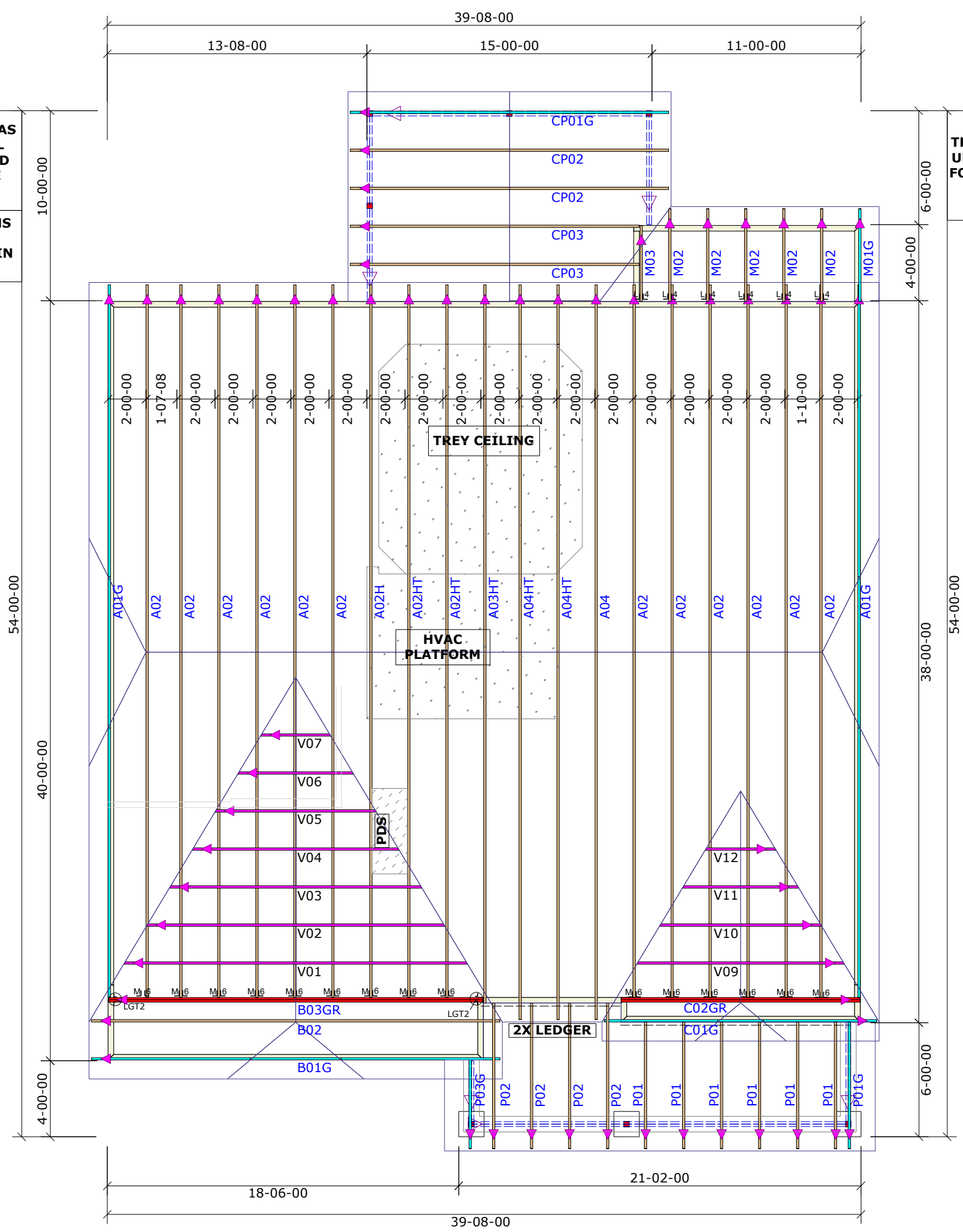
Revision History		Wind:	
Rev1:	xx/xx/xx	M.P.H.	120
Rev2:	xx/xx/xx	Exposure Category	
Rev3:	xx/xx/xx	B (Wooded areas/other)	
Pick Ticket: ---		Job No: ---	
Sales No: ---		Acct No: ---	

Hatch Legend	
	Attic Room
	Volume Ceiling
	Stick Framing

NOTE: LEFT END OF TRUSS AS SHOWN ON TRUSS DETAIL DRAWINGS ARE INDICATED ON LAYOUT BY TRIANGLE ICONS

ALL EXTERIOR DIMENSIONS ARE TO OUTSIDE OF SHEATHING. WALLS HELD IN 1/2" FOR SHEATHING

TRUSSES SPACED AT 24" o.c. UNLESS NOTED OTHERWISE. FOLLOW DIMENSION STRING FOR ODD DIMENSIONS.



Hatch Legend	
	Attic Room
	Volume Ceiling
	Stick Framing