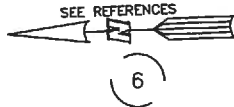
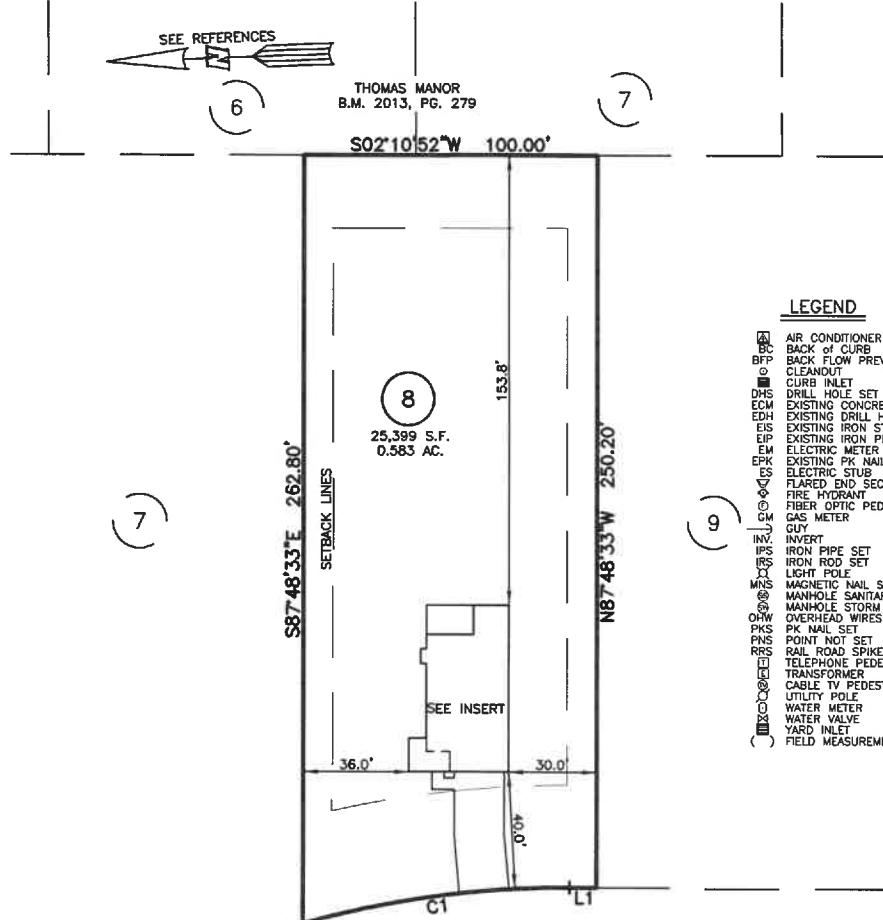


PLOT PLAN FOR
NEW HOME, INC., LLC
~~200 BEACON HILL ROAD~~ 47 Beacon Hill Road
 LOT 8, DUNCAN'S CREEK, PHASE I
 UPPER LITTLE RIVER TOWNSHIP, HARNETT COUNTY, NORTH CAROLINA



THOMAS MANOR
 B.M. 2013, PG. 279

S02°10'52"W 100.00'



LEGEND

- ⊠ AIR CONDITIONER
- BC BACK OF CURB
- BFP BACK FLOW PREVENTER
- CLEANOUT
- ⊞ CURB INLET
- DMS DRILL HOLE SET
- ECM EXISTING CONCRETE MONUMENT
- EDH EXISTING DRILL HOLE
- EIS EXISTING IRON STAKE
- EIP EXISTING IRON PIPE
- EM ELECTRIC METER
- EPK EXISTING PK NAIL
- ES ELECTRIC STUB
- ▽ FLARED END SECTION
- ⊞ FIRE HYDRANT
- FIBER OPTIC PEDESTAL
- CM GAS METER
- GUY GUY
- INV INVERT
- IPS IRON PIPE SET
- IRS IRON ROD SET
- LP LIGHT POLE
- MNS MAGNETIC NAIL SET
- MS MANHOLE SANITARY SEWER
- MS MANHOLE STORM SEWER
- OHW OVERHEAD WIRES
- PKS PK NAIL SET
- PNS POINT NOT SET
- RRS RAIL ROAD SPIKE
- TP TELEPHONE PEDESTAL
- TR TRANSFORMER
- CTV CABLE TV PEDESTAL
- UP UTILITY POLE
- WM WATER METER
- WV WATER VALVE
- YI YARD INLET
- () FIELD MEASUREMENT

BEACON HILL ROAD
 50' PUBLIC R/W

LINE	BEARING	DISTANCE
L1	N02°11'27"E	8.95'

CURVE	RADIUS	ARC LENGTH	CHORD LENGTH	CHORD BEARING	DELTA ANGLE
C1	335.00'	92.21'	91.92'	N05°41'41"W	15°48'17"

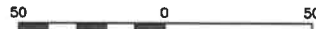
IMPERVIOUS SURFACES	
HOUSE	1,520 S.F.
WALK & DRIVE	740 S.F.
COVERED PATIO	160 S.F.
TOTAL	2,420 S.F.

SETBACK INFO

FRONT: 35'
 REAR: 25'
 SIDES: 10'
 CORNER SIDE: 20'
 AGGREGATE SIDE: 20'

REFERENCES:

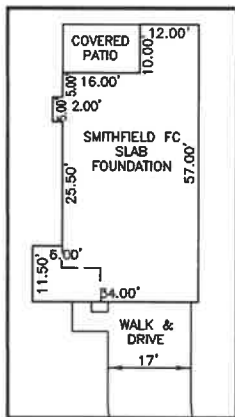
B.M. 2022, PG. 594-596



SCALE: 1" = 50'

NOTES

1. THIS SURVEY SUBJECT TO ANY FACTS THAT MAY BE DISCLOSED BY A FULL AND ACCURATE TITLE SEARCH.
2. THIS MAP MAY NOT BE A CERTIFIED SURVEY AND HAS NOT BEEN REVIEWED BY A LOCAL GOVERNMENT AGENCY FOR COMPLIANCE WITH ANY APPLICABLE LAND DEVELOPMENT REGULATIONS AND HAS NOT BEEN REVIEWED FOR COMPLIANCE WITH RECORDING REQUIREMENTS FOR PLATS.



INSERT: 1"=30'

PLOT PLAN
 PRELIMINARY PLAT- NOT FOR RECORDATION,
 CONVEYANCE OR SALES

REV CODE: 1.FLIP, 2.PLAN, 3.ROTATE, 4.MOVE, 5.SS
 6.SEVERAL OF ABOVE, 7.LAND FEATURE, 8. OTHER

DATE: MARCH 24, 2003

F.B. _____

RWK, PA

engineering ~ surveying
 Corporate License: C-1771
 101 W. Main St., Suite 202
 Garner, NC 27529
 Phone (919) 779-4854
 Fax (919) 779-4056