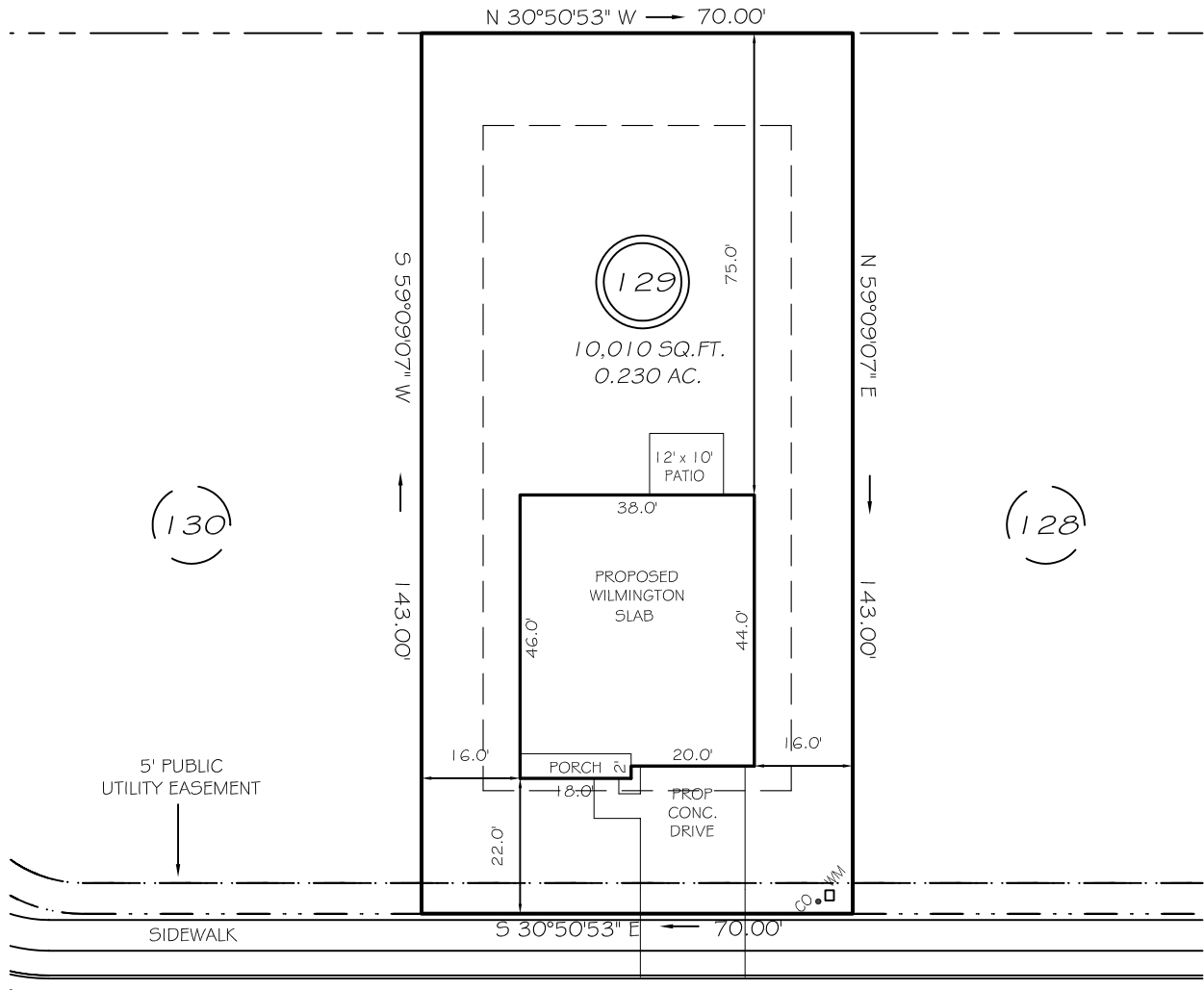


I, MICHAEL P. GRIFFIN, certify that under my direction and supervision this map was drawn from an actual field survey; that the error of closure of the survey as calculated by coordinates is 1: 10,000+; that the area shown hereon was calculated by coordinates.

Witness my hand and seal this day of MONTH 2023.

BM 2022 FGS 458-462
HARNETT CO. REGISTRY

OPEN SPACE



WINTERBERRY WAY
50' PUBLIC RW & UTILITY

IMPERVIOUS AREAS

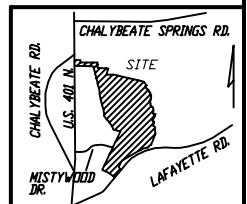
HOUSE	1708 SQ. FT.
DRIVE & WALKS	448 SQ. FT.
PATIO	120 SQ. FT.
TOTAL	2276 SQ. FT.
ALLOWED	3000 SQ. FT.

SETBACKS

FRONT	20'
REAR	15'
SIDE	10'
CORNER SIDE	15'

LEGEND

EIP	EXISTING IRON PIPE	MH	MANHOLE
IPS	IRON PIPE SET	WM	WATER METER
R/W	RIGHT OF WAY	CO	CLEAN OUT
N/F	NOW OR FORMERLY	FH	FIRE HYDRANT
EIS	EXISTING IRON STAKE	CB	CATCH BASIN



P R E L I M I N A R Y
NOT FOR RECORDATION,
SALES OR CONVEYANCE



GRIFFIN LAND SURVEYING, INC.

P. O. BOX 148
FUQUAY-VARINA, NC 27526
(919) - 567-1963

PLOT PLAN
FOR

D. R. HORTON

WOODGROVE

LOT 129

WINTERBERRY WAY

NORTH CAROLINA

HARNETT CO. HECTOR'S CREEK TWSHP

DRAWN BY KDF

DATE 3/13/23

CHECKED BY MPG

SCALE 1" = 30'