

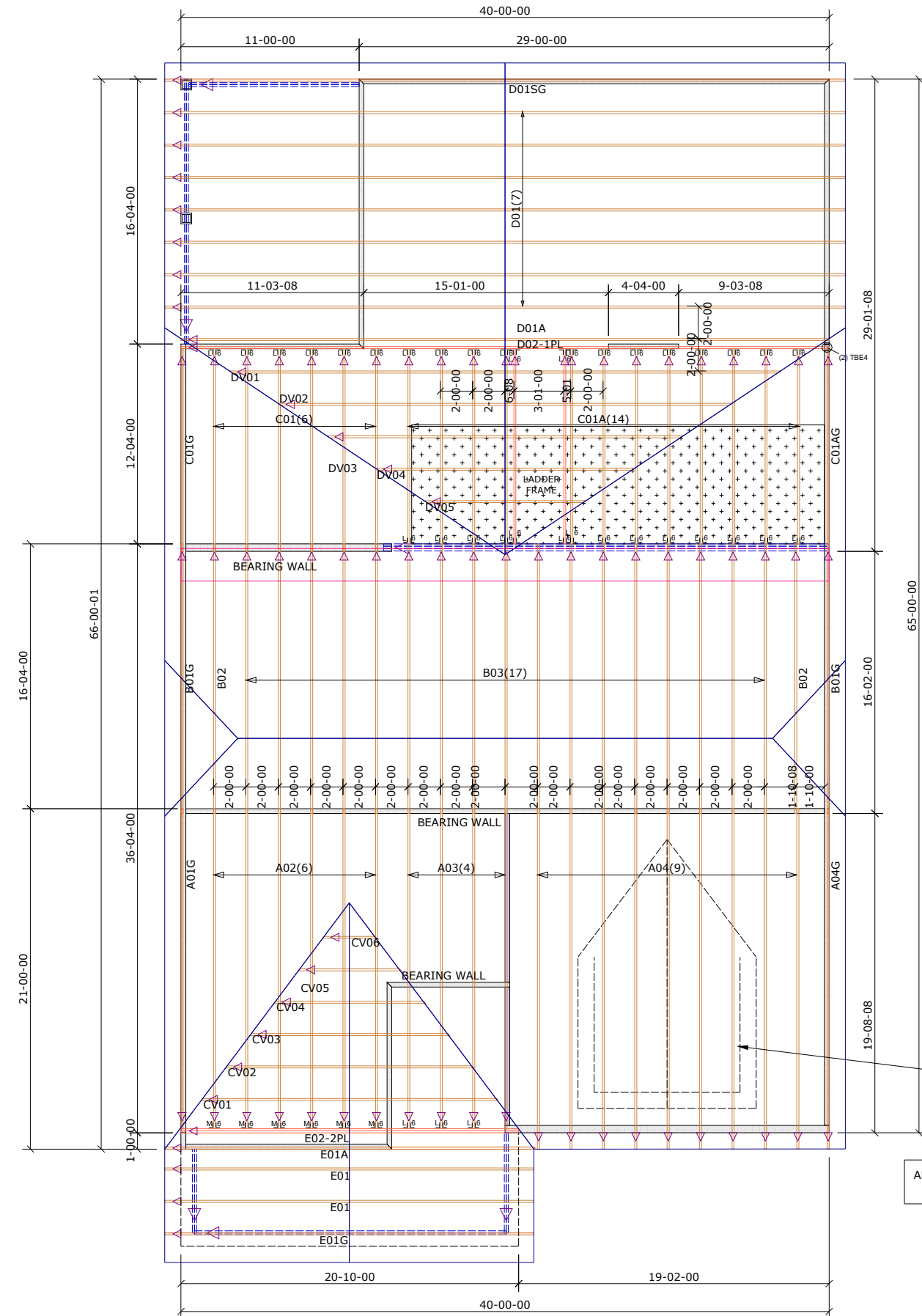
General Notes:
 - Per ANSI/TPI 1-2002 all " Truss to Wall" connections are the responsibility of the Building Designer, not the Truss Manufacturer.
 - Dimensions are Feet-Inches- Sixteenths.

- Trusses are to be 24" o.c. unless noted otherwise (U.N.O.)
 - Trusses are not designed to support brick U.N.O.
 - Do not cut or modify trusses without first contacting Builders FirstSource.
 - Immediately contact Builders FirstSource if trusses are damaged.

Connection Notes:
 - All hangers are to be Simpson or equivalent U.N.O.
 - Use Manufacturer's specifications for all hanger connections U.N.O.
 - Use 10d x 1 1/2" Nails in hanger connections to single ply roof girder trusses.

Floor Notes:
 - Shift truss as required to avoid plumbing traps.
 - Installation Contractor and/or Field Supervisor are to verify all dimensions, trap locations, and options prior to installation

Dimension Notes:
 - Drawing not to scale. Do not scale dimensions



STICK FRAME DORMER ROOF OVER TRUSSES

ALL TRUSS TO BEARING TIE-DOWNS TO BE SIMPSON H2.5A U.N.O.

| Hanger List | | All Tie Downs H2.5A Unless noted | |
|-------------|-------|----------------------------------|--|
| 6 | HTU26 | MJL8 | |
| 37 | LUS26 | UL8 | |
| 2 | TBE4 | 11 | |

Special Items List

Misc Material

| | | | |
|-------------------------|-----------|--------------------|-------------|
| CHESAPEAKE HOMES | | | |
| 307 | Elev: | D | |
| FARM AT NEILLS CREEK | | | |
| --- | NC | Lot: | 171 |
| OPT. 2ND FLOOR | | Appwright # | |
| | | 3460634 | |
| | | Code: | IRC 2015 |
| | | Loading: | |
| | | T.C.L.L. | 20.0 lb/ft2 |
| | | T.C.D.L. | 10.0 lb/ft2 |
| | | B.C.L.L. | 0.0 lb/ft2 |
| | | B.C.D.L. | 10.0 lb/ft2 |
| Designed By: | ABS | | |
| Layout: | - | | |
| L/O Date: | 3/21/2023 | | |
| Revision History | | Wind: | |
| Rev1: | xx/xx/xx | M.P.H. | 140 |
| Rev2: | xx/xx/xx | Exposure Category | |
| Rev3: | xx/xx/xx | B | |
| Pick Ticket: | --- | Job No.: | --- |
| Sales No.: | --- | Acct No.: | --- |

| Hatch Legend | |
|--------------|----------------|
| | Attic Room |
| | Volume Ceiling |
| | Stick Framing |