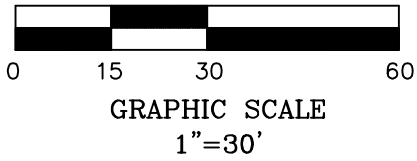


VICINITY MAP (NTS)



LEGEND

- MATHEMATICAL POINT
- CONTROL CORNER
- ▣ WATER METER
- ⊙ SEWER CLEAN OUT
- ⊗ FIRE HYDRANT

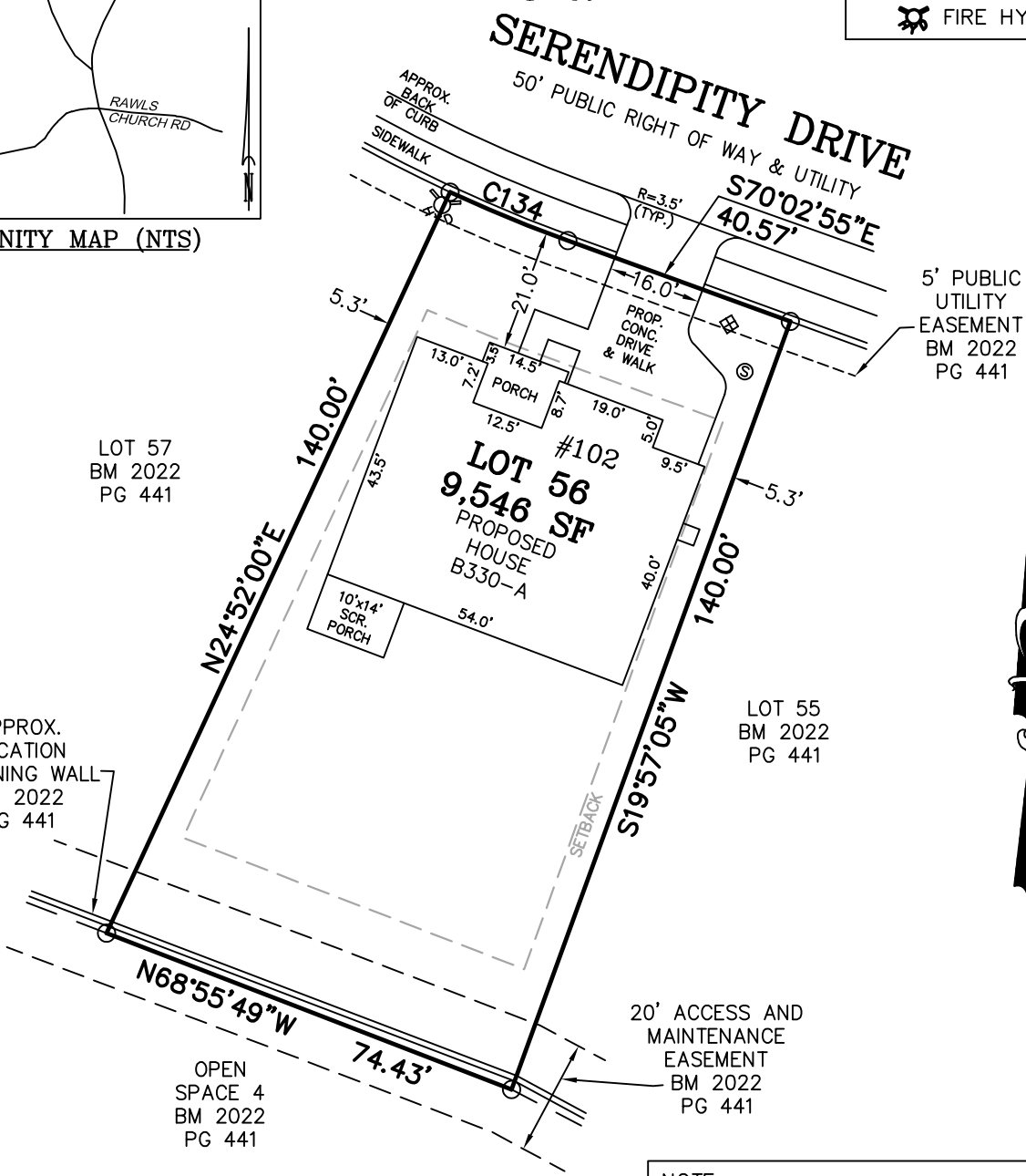
LOT 57
BM 2022
PG 441

APPROX.
LOCATION
RETAINING WALL
BM 2022
PG 441

OPEN
SPACE 4
BM 2022
PG 441

LOT 55
BM 2022
PG 441

SEE NOTES



CURVE TABLE				
CURVE	LENGTH	RADIUS	CHORD BEARING	CHORD
C134	21.88'	255.00'	S67°35'27"E	21.87'

NOTE:
THE SIDES OF THE FOUNDATION LIE 0.3' FROM THE SETBACK. MSS LAND CONSULTANTS WILL NOT BE LIABLE FOR ANY OVERHANGS OR ERROR'S DUE TO THE CONSTRUCTION PROCESS.

NOTES:
 -REFERENCE HARNETT CO. BM 2022, PG 434-448 FOR BOUNDARY INFORMATION, NORTH INDEX & TIE LINES TO SUBDIVISION CONTROL CORNERS.
 -ZONED: RA-30, RA-40, & CONSERVATION.
 -SETBACKS:
 43' LOT WIDTH:
 FRONT YARD-20', SIDE YARD-4' & 4' OR 0' & 8', REAR YARD-20', CORNER YARD-12'.
 >43' LOT WIDTH:
 FRONT YARD-20', SIDE YARD-5', REAR YARD-20', CORNER YARD-12'.
 -PROPERTY IS NOT LOCATED WITHIN A SPECIAL FLOOD HAZARD AREA AS SCALED FROM THE NFIP FIRM No. 3720065500L (EFFECTIVE DATE: JULY 19, 2022).

MAXIMUM ALLOWABLE IMPERVIOUS-3,600 SF

TOTAL ESTIMATED IMPERVIOUS-3,134 SF	
SITE	SQ. FT.
HOUSE	2,394
DRIVEWAY	536
LEAD WALK	55
COV. PORCH	140
A/C PAD	9

PERMIT PLAN LOT: 56

SERENITY SUBDIVISION, PHASE 1
HECTORS CREEK TOWNSHIP, HARNETT COUNTY, NC

SURVEYED FOR
DAVID WEEKLEY HOMES
1901 N. HARRISON AVENUE, SUITE 200
CARY, NC 27513

MSS LAND CONSULTANTS, PC
 "Committed to Total Quality Service"
 Firm License: C-2070
 E S T. 1 9 9 8

6118 St. Giles St Phone (919) 510-4464
 (Suite E) Fax (919) 510-9102
 Raleigh, NC 27612 Email: gowersw@mssland.com

I HEREBY CERTIFY THAT THE BUILDING WILL LIE WHOLLY ON THE LOT. THIS PLAT IS OF AN EXISTING PARCEL OF LAND. THIS IS NOT A SURVEY AND NOT FOR RECORDATION PURPOSES.

PRELIMINARY PLAN

WADE A. GOWERS, PLS L-4639

O:_DWHOMES\DWH-22-02.dwg, 56.dwg, Layout1, 2/21/2023 2:19:51 PM, premtceb, 1:1