

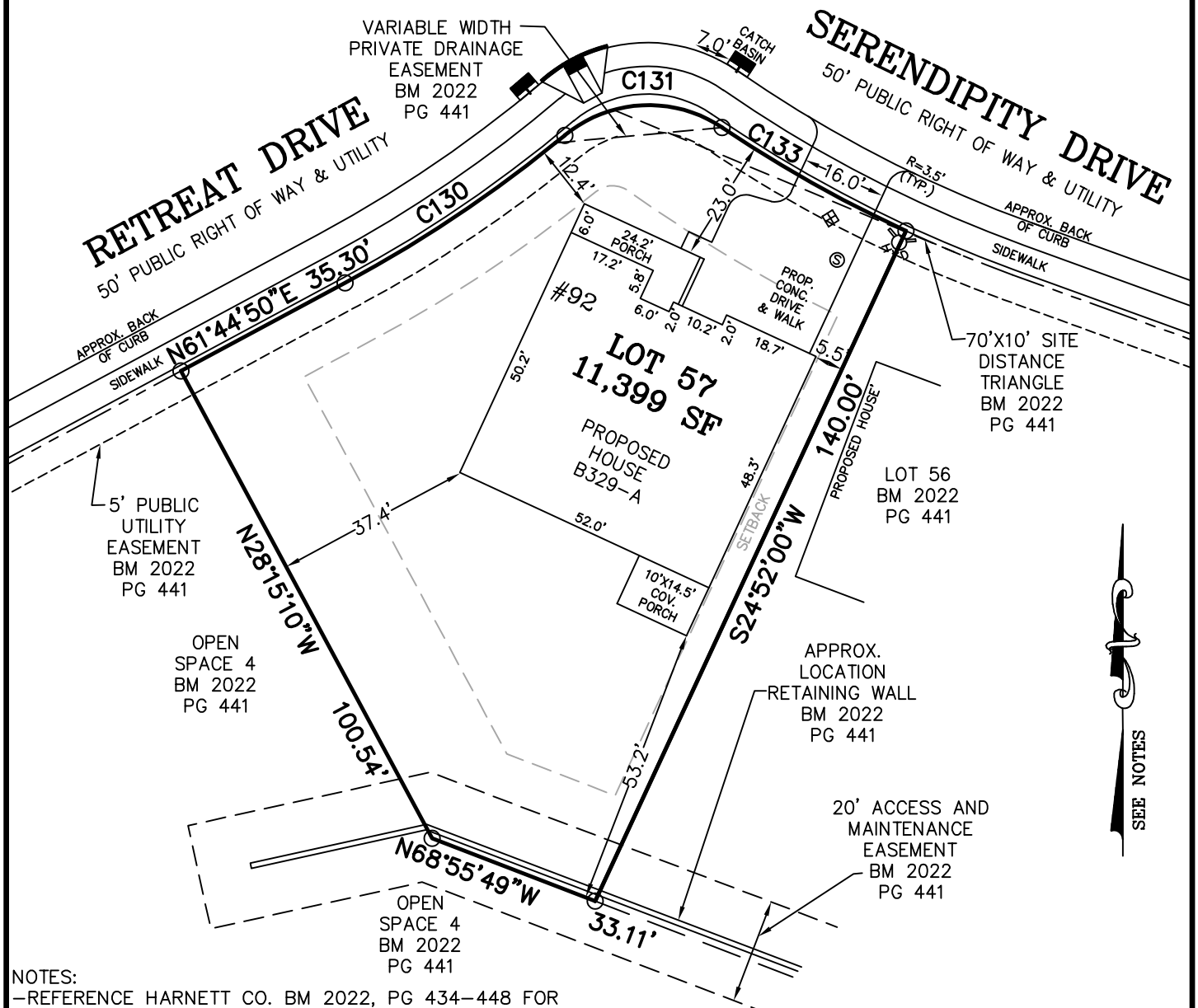
GRAPHIC SCALE  
1"=30'

CURVE TABLE				
CURVE	LENGTH	RADIUS	CHORD BEARING	CHORD
C130	50.20'	255.00'	N56°06'07"E	50.12'
C131	32.02'	25.00'	N87°09'38"E	29.88'
C133	39.99'	255.00'	S60°38'24"E	39.95'

**LEGEND**

- MATHEMATICAL POINT
- CONTROL CORNER
- ⊠ WATER METER
- ⊙ SEWER CLEAN OUT
- ⊗ FIRE HYDRANT

VICINITY MAP (NTS)



**NOTES:**  
 -REFERENCE HARNETT CO. BM 2022, PG 434-448 FOR BOUNDARY INFORMATION, NORTH INDEX & TIE LINES TO SUBDIVISION CONTROL CORNERS.  
 -ZONED: RA-30, RA-40, & CONSERVATION.  
 -SETBACKS:  
 43' LOT WIDTH:  
 FRONT YARD-20', SIDE YARD-4' & 4' OR 0' & 8', REAR YARD-20', CORNER YARD-12'.  
 >43' LOT WIDTH:  
 FRONT YARD-20', SIDE YARD-5', REAR YARD-20', CORNER YARD-12'.  
 -PROPERTY IS NOT LOCATED WITHIN A SPECIAL FLOOD HAZARD AREA AS SCALED FROM THE NFIP FIRM No. 3720065500L (EFFECTIVE DATE: JULY 19, 2022).

MAXIMUM ALLOWABLE IMPERVIOUS-3,600 SF

TOTAL ESTIMATED IMPERVIOUS-3,558 SF	
SITE	SQ. FT.
HOUSE	2,684
DRIVEWAY	703
LEAD WALK	17
COV. PORCH	145
A/C PAD	9

PERMIT PLAN LOT: 57

SERENITY SUBDIVISION, PHASE 1  
 HECTORS CREEK TOWNSHIP, HARNETT COUNTY, NC

SURVEYED FOR  
**DAVID WEEKLEY HOMES**  
 1901 N. HARRISON AVENUE, SUITE 200  
 CARY, NC 27513

I HEREBY CERTIFY THAT THE BUILDING WILL LIE WHOLLY ON THE LOT. THIS PLAT IS OF AN EXISTING PARCEL OF LAND. THIS IS NOT A SURVEY AND NOT FOR RECORDATION PURPOSES.



**MSS LAND CONSULTANTS, PC**  
 "Committed to Total Quality Service"  
 Firm License: C-2070  
 EST. 1998

6118 St. Giles St Phone (919) 510-4464  
 (Suite E) Fax (919) 510-9102  
 Raleigh, NC 27612 Email: gowersw@mssland.com

PRELIMINARY PLAN

WADE A. GOWERS, PLS L-4639

O:\\_DWHOMES\IDWH-22-02.dwg 57.dwg, Layout1, 2/23/2023 11:53:19 AM, crawforde, 1:1