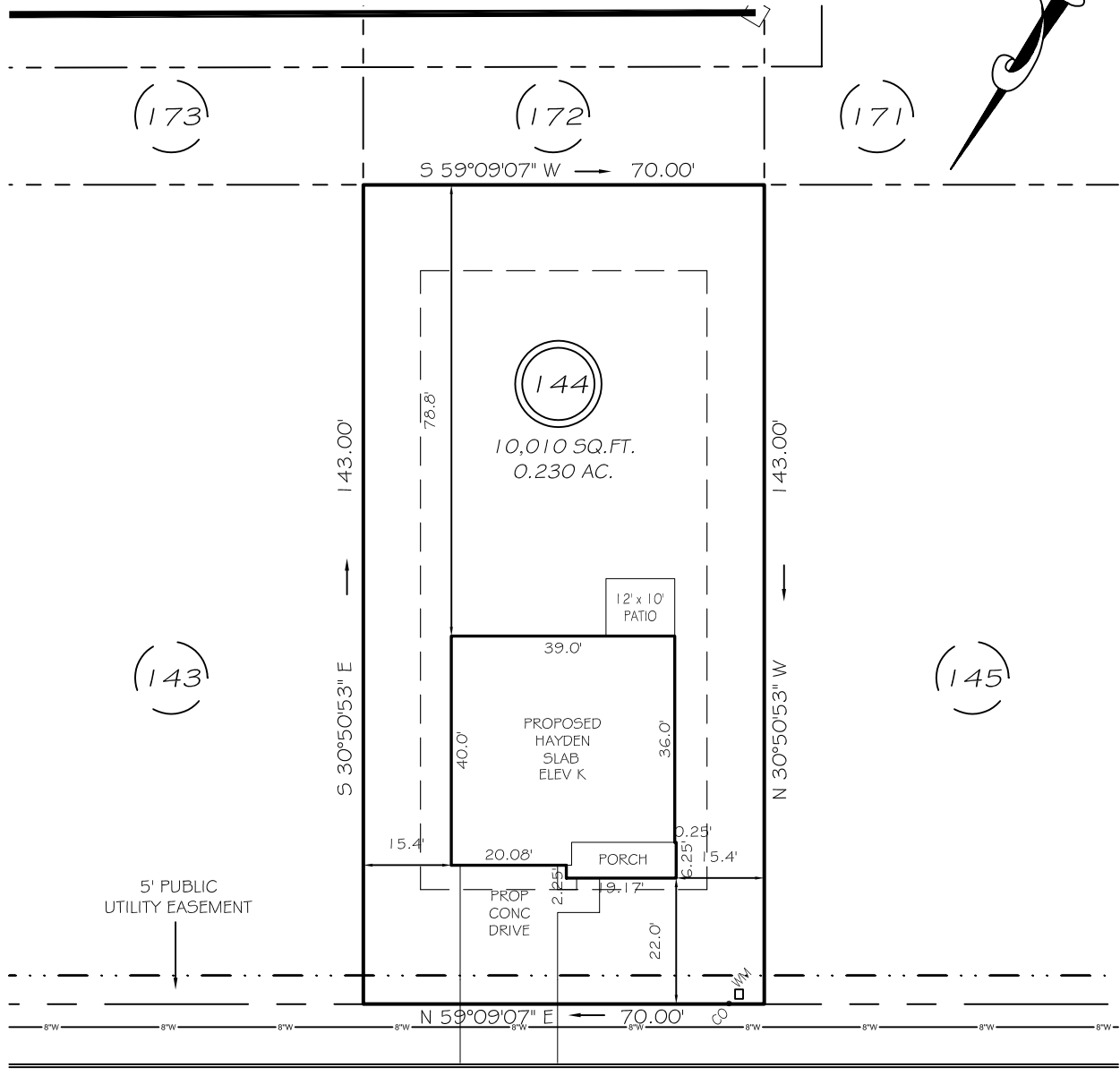


I, MICHAEL P. GRIFFIN, certify that under my direction and supervision this map was drawn from an actual field survey; that the error of closure of the survey as calculated by coordinates is 1: 10,000+; that the area shown hereon was calculated by coordinates.

Witness my hand and seal this day of MONTH 2023.

EM 2022 REG 458-462
HARNETT CO. REGS/RV



PAPER BIRCH WAY
50' PUBLIC R/W & UTILITY

IMPERVIOUS AREAS

HOUSE	1 604 SQ. FT.
DRIVE & WALKS	450 SQ. FT.
PATIO	120 SQ. FT.
TOTAL	2 174 SQ. FT.
ALLOWED	3 000 SQ. FT.

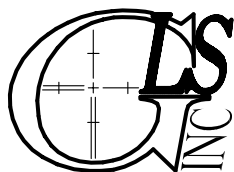
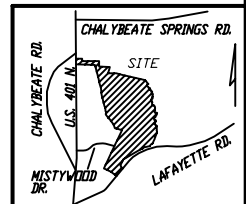
SETBACKS

FRONT	20'
REAR	15'
SIDE	10'
CORNER SIDE	15'

P R E L I M I N A R Y
NOT FOR RECORDATION,
SALES OR CONVEYANCE

LEGEND

EIP	EXISTING IRON PIPE	MH	MANHOLE
IPS	IRON PIPE SET	WM	WATER METER
R/W	RIGHT OF WAY	CO	CLEAN OUT
N/F	NOW OR FORMERLY	FH	FIRE HYDRANT
EIS	EXISTING IRON STAKE	CB	CATCH BASIN



GRIFFIN LAND SURVEYING, INC.

P. O. BOX 148
FUQUAY-VARINA, NC 27526
(919) - 567-1963

PLOT PLAN
FOR

D. R. HORTON

WOODGROVE

LOT 144

PAPER BIRCH WAY

NORTH CAROLINA

HARNETT CO. HECTOR'S CREEK TWSHP

DRAWN BY KDF

DATE 3/13/23

CHECKED BY MPG

SCALE 1" = 30'