

**General Notes:**

- Per ANSI/TPI 1-2002 all " Truss to Wall" connections are the responsibility of the Building Designer, not the Truss Manufacturer.
- Dimensions are Feet-Inches- Sixteenths.
- Trusses are to be 24" o.c. unless noted otherwise (U.N.O.)
- Trusses are not designed to support brick U.N.O.
- Do not cut or modify trusses without first contacting Builders FirstSource.
- Immediately contact Builders FirstSource if trusses are damaged.

**Connection Notes:**

- All hangers are to be Simpson or equivalent U.N.O.
- Use Manufacturer's specifications for all hanger connections U.N.O.
- Use 10d x 1 1/2" Nails in hanger connections to single ply roof girder trusses.

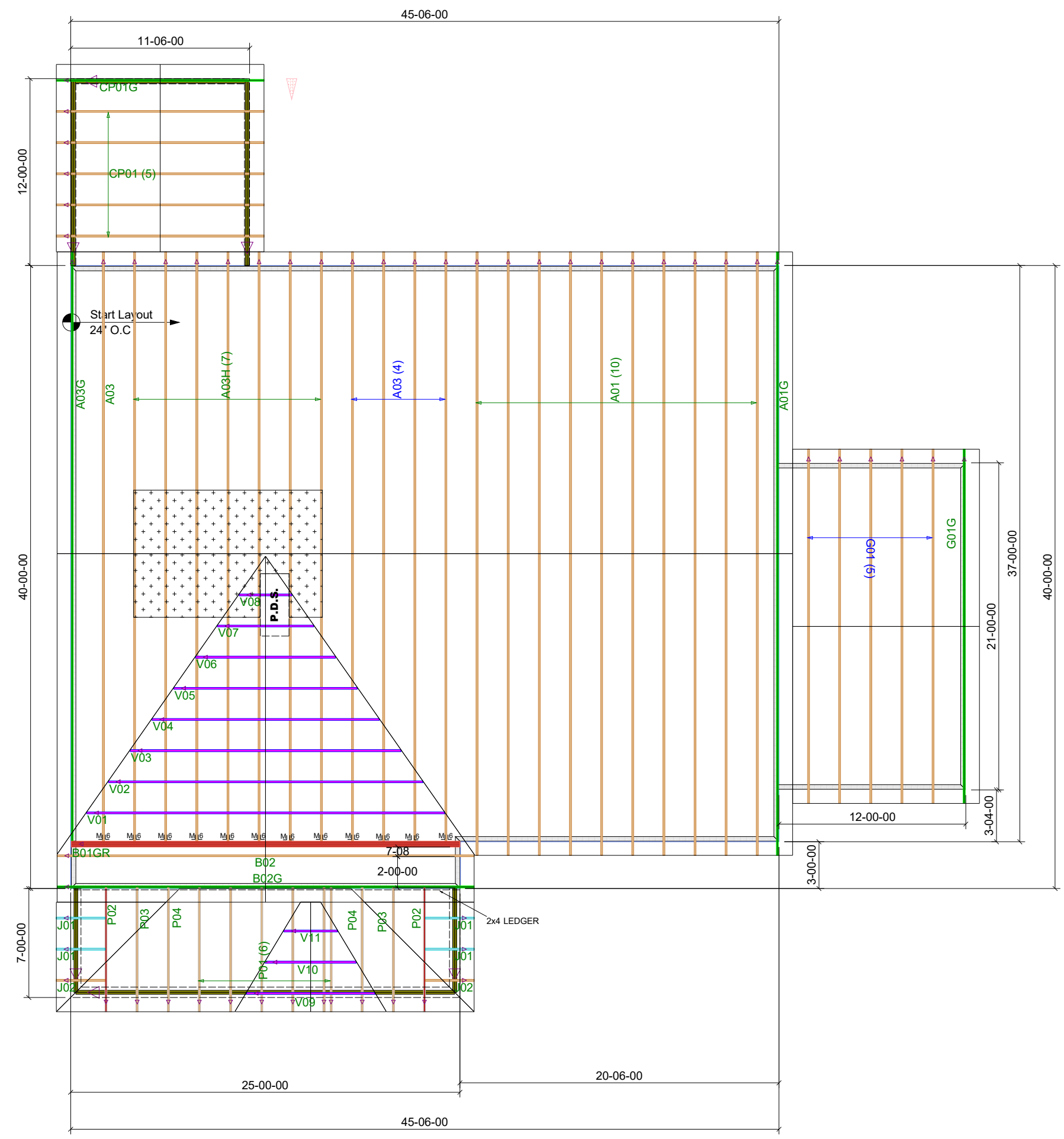
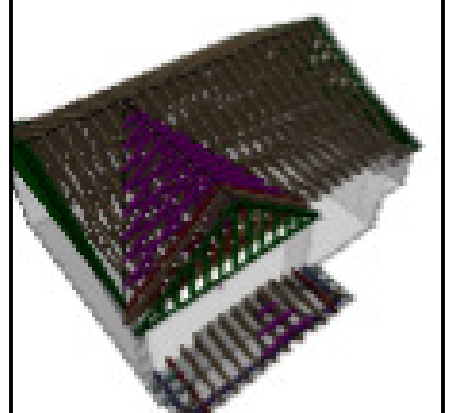
**Floor notes:**

- Shift truss as required to avoid plumbing traps.
- Installation Contractor and/or Field Supervisor are to verify all dimensions, trap locations, and options prior to installation

**Dimension Notes:**

- Drawing not to scale. Do not scale dimensions

◁ ▷ ▽ LEFT END OF TRUSS AS SHOWN ON TRUSS DETAIL DRAWINGS ARE INDICATED BY TRIANGLE ICONS.



HANGER LIST		ALL TIE DOWNS H2.5A UNLESS NOTED	
		<b>SPECIAL ITEMS LIST</b>	
		<b>MISC MATERIAL</b>	
CHESAPEAKE			
628	ELEV:	B	
FARM			
---	NC	LOT:	172
<b>APPWRIGHT #</b>			
---			
<ul style="list-style-type: none"> <li>[OPTION 1]</li> <li>[OPTION 2]</li> <li>[OPTION 3]</li> </ul>		<b>CODE:</b>	IRC 2015
		<b>LOADING:</b>	
		T.C.L.L.	40 PSF
<b>DESIGNED BY:</b>	HYS	T.C.D.L.	10 PSF
<b>LAYOUT:</b>	---	B.C.L.L.	0 PSF
<b>L/O DATE:</b>	8/22/2023	B.C.D.L.	5 PSF
<b>REVISION HISTORY</b>		<b>WIND:</b>	
REV1:	XX/XX/XX	M.P.H.	115 MPH
REV2:	XX/XX/XX	EXPOSURE CATEGORY	
REV3:	XX/XX/XX	B (WOODED AREAS/OTHERS)	
<b>PICK TICKET:</b>	---	<b>JOB NO.:</b>	---
<b>SALES NO.:</b>	---	<b>ACCT NO.:</b>	---

HATCH LEGEND	
	ATTIC ROOM
	VOLUME CEILING
	STICK FRAMING