



COMMENTS: \_\_\_\_\_

LANDSCAPE POSITIONS	GROUP	TEXTURES	.1955 LTAR	CONSISTENCE MOIST	WET
R-RIDGE	I	S-SAND	1.2 - 0.8	VFR-VERY FRIABLE FR-FRIABLE	NS-NON-STICKY SS-SLIGHTLY STICKY
S-SHOULDER SLOPE		LS-LOAMY SAND			
L-LINEAR SLOPE	II	SL-SANDY LOAM	0.8 - 0.6	FI-FIRM VFI-VERY FIRM EFI-EXTREMELY FIRM	S-STICKY VS-VERY STICKY NP-NON-PLASTIC SP-SLIGHTLY STICKY
FS-FOOT SLOPE		L-LOAM			
N-NOSE SLOPE	III	SI-SILT	0.6 - 0.3		P-PLASTIC VP-VERY PLASTIC
H-HEAD SLOPE		SIL-SILT LOAM			
CC-CONCLAVE SLOPE		CL-CLAY LOAM			
CV-CONVEX SLOPE		SCL-SANDY CLAY LOAM			
T-TERRACE	IV	SIC-SILTY CLAY	0.4 - 0.1		
FP-FLOOD PLAN		C-CLAY SC-SANDY CLAY			

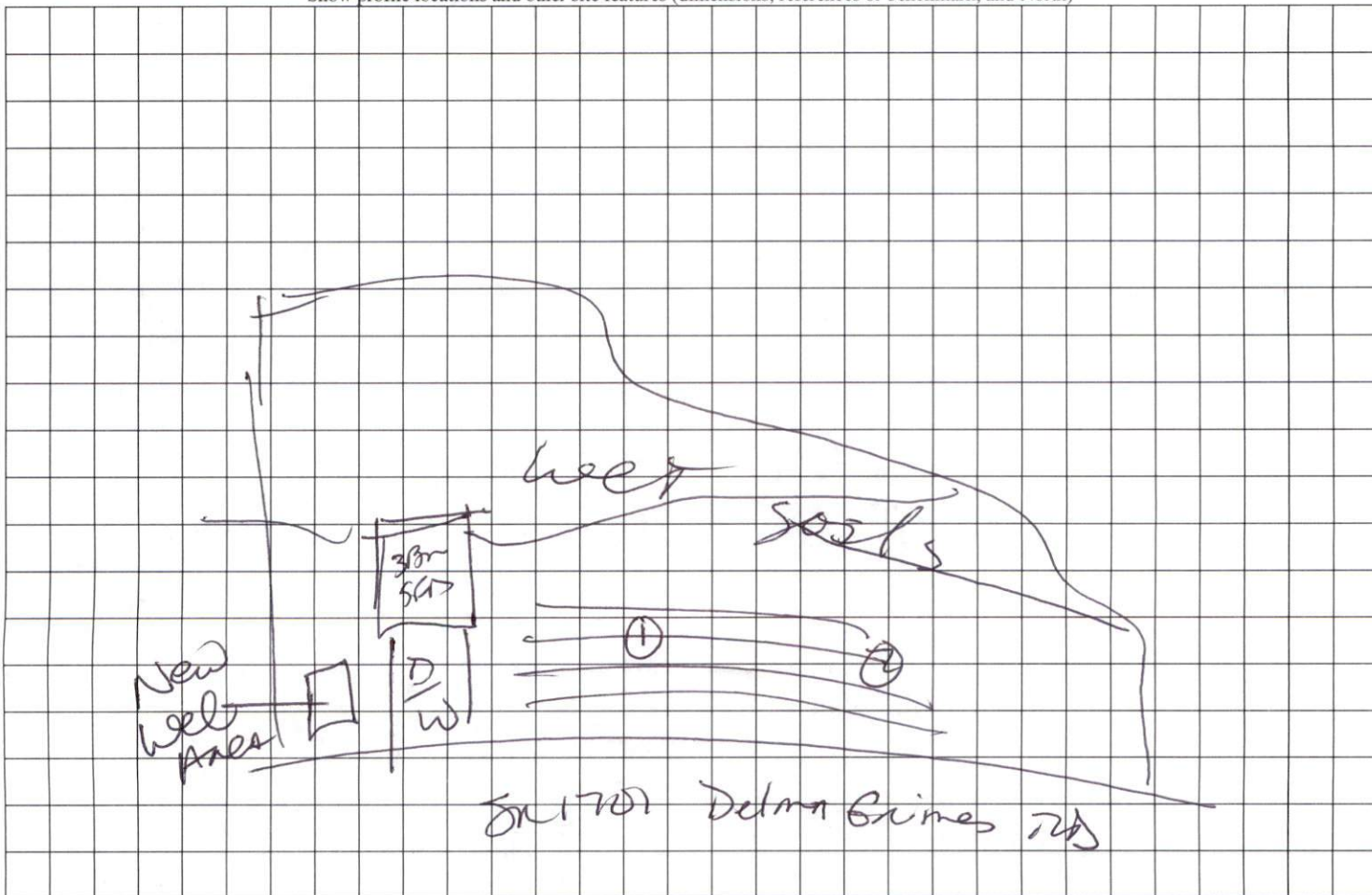
STRUCTURE

- SG-SINGLE GRAIN
- M- MASSIVE
- CR-CRUMB
- GR-GRANULAR
- SBK-SUBANGULAR BLOCKY
- ABK-ANGULAR BLOCKY
- PL-PLATY
- PR-PRISMATIC

MINERALOGY

- SLIGHTLY EXPANSIVE
- EXPANSIVE

Show profile locations and other site features (dimensions, references or benchmark, and North)



Delma Grimes Road  
3-Bedroom Septic Proposal  
Lot #5



System: Pump to D-Box  
Lines: 1-2 (230')  
0.4 LTAR  
18" Trench Bottom  
Accepted Status System  
Repair: Pump to D-Box  
Lines: 3-4 (230')  
0.4 LTAR  
18" Trench Bottom  
Accepted Status System

GRAPHIC SCALE  
1" = 50'



Adams  
Soil Consulting  
919-414-6761  
Job #636