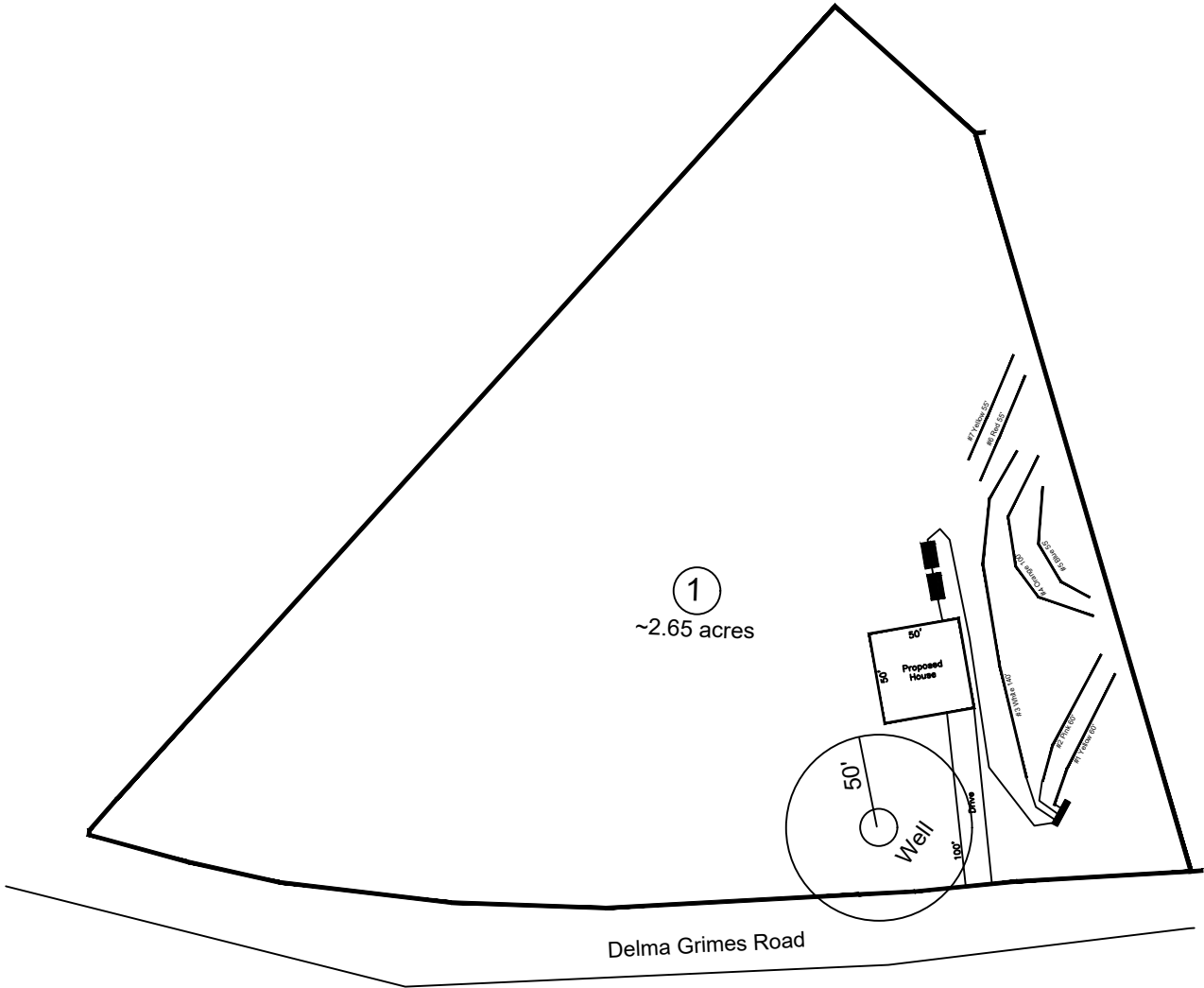


# Delma Grimes Road 3-Bedroom Septic Proposal Lot# 1



**Lot #1**  
Lines: 1-3 (260')  
0.35 LTAR  
18" Trench Bottom  
Accepted Status System  
Repair: Pressure Manifold  
Lines: 4-7 (265')  
0.35 LTAR  
18" Trench Bottom  
Accepted Status System

GRAPHIC SCALE  
1" = 100'



Adams  
Soil Consulting  
919-414-6761  
Job #636