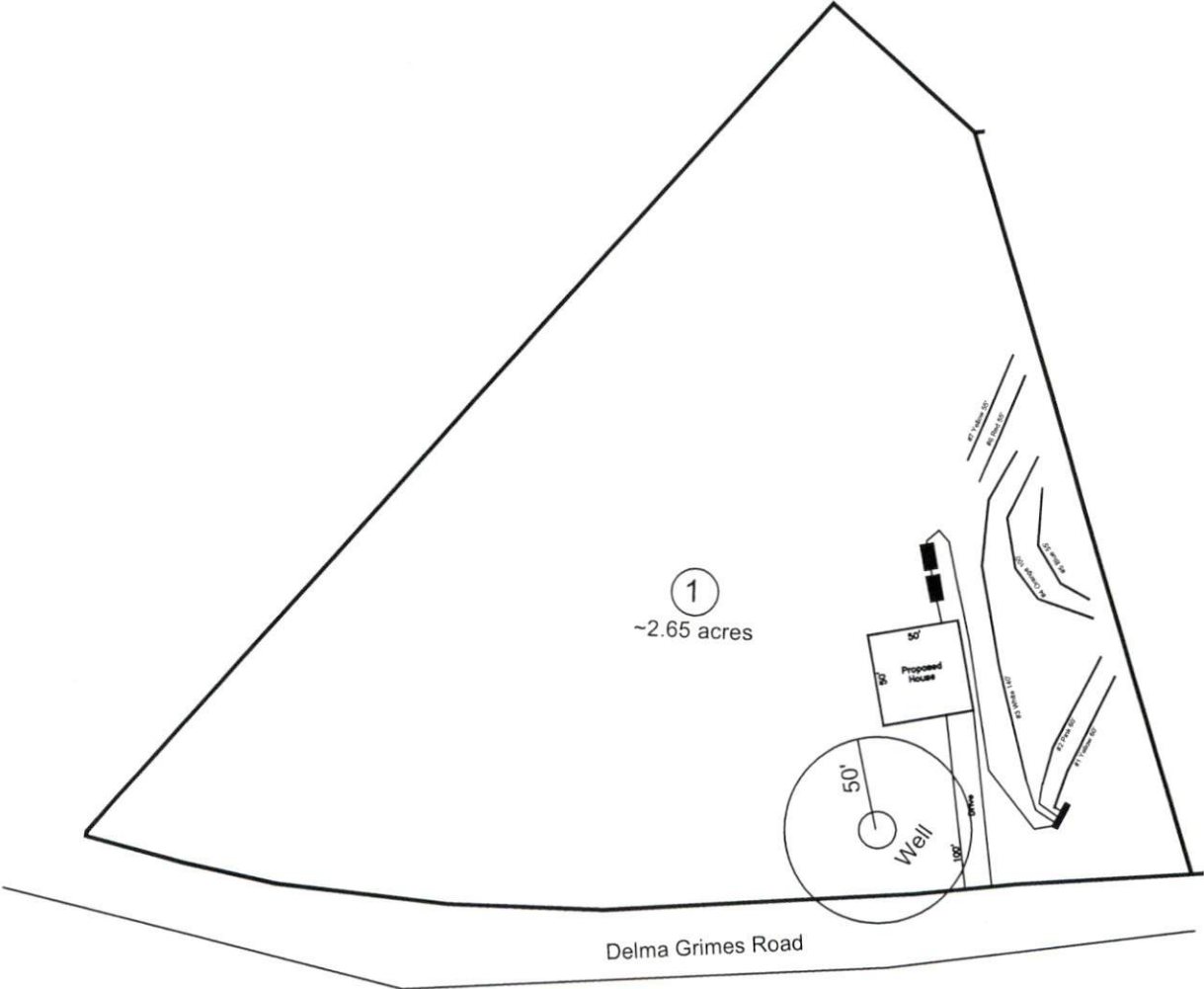


Delma Grimes Road 3-Bedroom Septic Proposal Lot# 1



Lot #1
 Lines: 1-3 (260')
 0.35 LTAR
 18" Trench Bottom
 Accepted Status System
 Repair: Pressure Manifold
 Lines: 4-7 (265')
 0.35 LTAR
 18" Trench Bottom
 Accepted Status System

GRAPHIC SCALE
 1" = 100'



Adams
 Soil Consulting
 919-414-6761
 Job #636