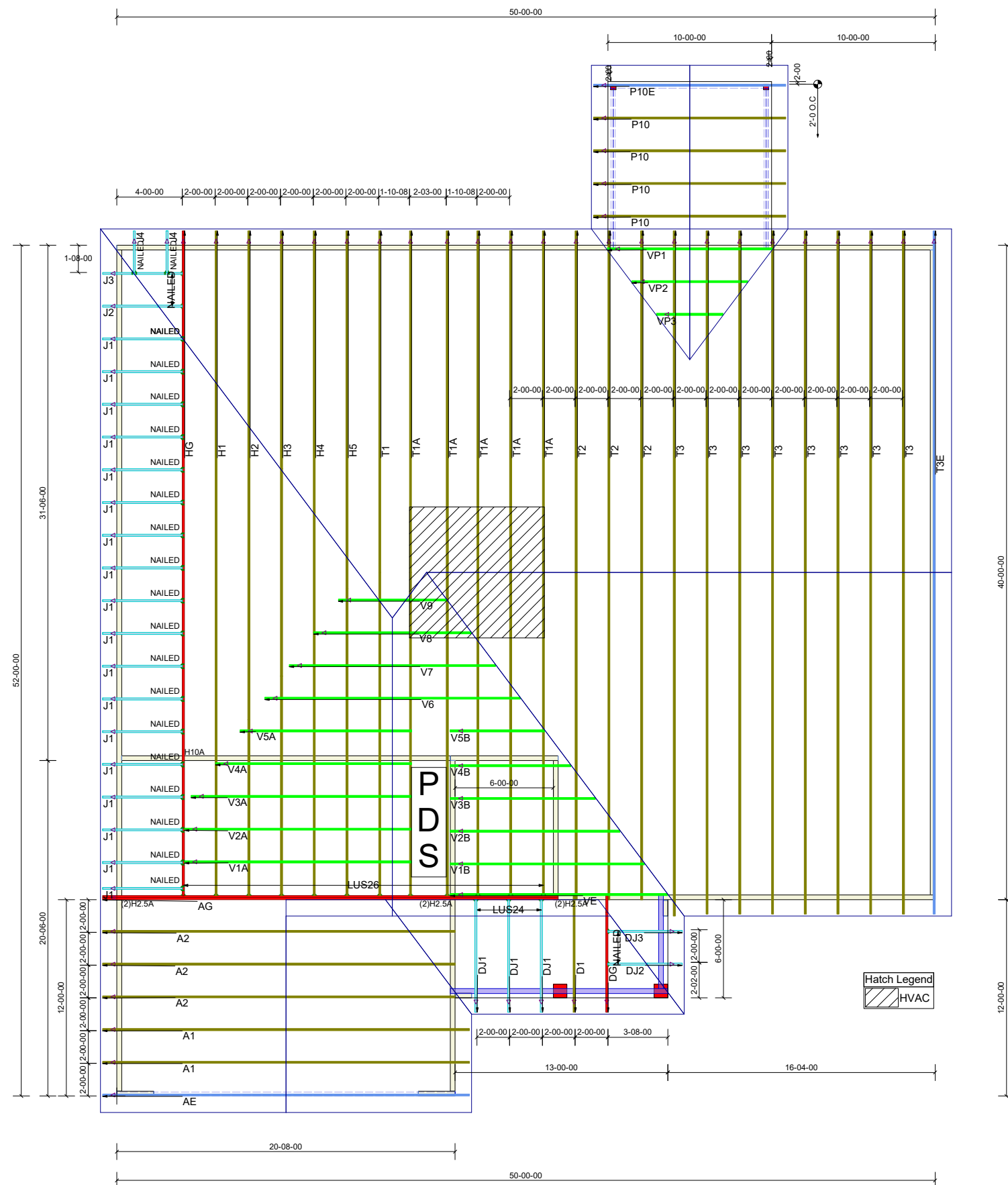


THIS LAYOUT IS INTENDED FOR THE PURPOSE OF TRUSS LOCATION AND PLACEMENT ONLY. REFER TO THE BUILDING PLANS FOR ACTUAL BUILDING CONSTRUCTION.



Truss Connector List			
Symbo	Manuf	Product	Qty
LUS24	Simpson	LUS24	3
LUS26	Simpson	LUS26	12
AS INFO	Simpson	H2.5A	70
H10A	Simpson	H10A	1



DEDICATED TO QUALITY AND EXCELLENCE
 200 EMMETT ROAD
 DUNN, NORTH CAROLINA 28334
 PHONE: 910-892-8400
 FAX: 910-892-8384

PROJECT:	117 BIRCHWOOD GROVE		
CUSTOMER:	KB HOME		
MODEL:	150.1773 "D" 10x10 ScP GOL		
SCALE:	NOT TO SCALE	ORDER:	36176A
DRAWN BY:	NJC	PO #	XXXX
	PRINT DATE:	REV:	SHIP DATE:
	3/14/23	XXXX	2023

- TOP LIVE: 20 PSF
- TOP DEAD: 10 PSF
- BOTM DEAD: 10 PSF
- WIND SPD: 120 MPH

GENERAL NOTES:

DO NOT CUT OR MODIFY TRUSSES.

TRUSSES ARE SPACED 24" ON CENTER UNLESS NOTED OTHERWISE.

REFER TO THE INDIVIDUAL TRUSS DESIGN DRAWINGS FOR THE LOCATION OF LATERAL BRACING AND MULTI-PLY CONNECTION REQUIREMENTS.

PER ANSI TPI 1-2002 THE TRUSS ENGINEER IS RESPONSIBLE FOR TRUSS TO TRUSS CONNECTIONS AND TRUSS PLY TO PLY CONNECTIONS. THIS TRUSS PLACEMENT PLAN RECOMMENDS TRUSS TO BEARING CONNECTIONS AND TRUSS TO BEAM CONNECTIONS WHICH SHALL BE REVIEWED BY THE BUILDING DESIGNER. IT IS THE RESPONSIBILITY OF THE BUILDING DESIGNER TO RESOLVE ALL ROOF FORCES ADEQUATELY TO THE FOUNDATION.