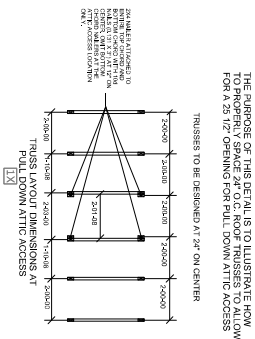
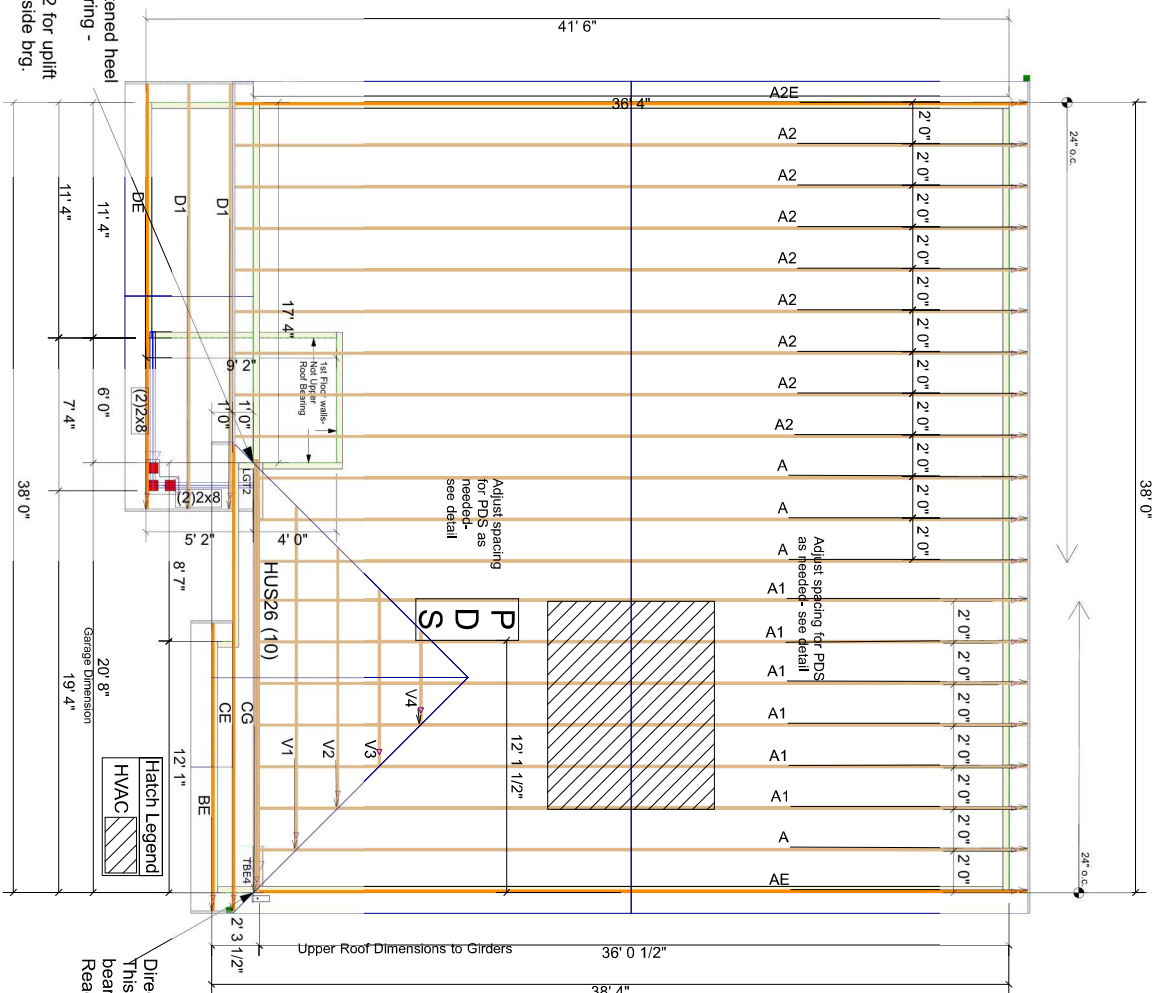


THIS LAYOUT IS INTENDED FOR THE PURPOSE OF TRUSS LOCATION AND PLACEMENT ONLY. REFER TO THE BUILDING PLANS FOR ACTUAL BUILDING CONSTRUCTION.



Sym	Mfg	Product	Qty
10	HUS26	Simpson	HUS26
1	LGT2	Simpson	LGT2
1	TBE4	Simpson	TBE4



GENERAL NOTES:

- DO NOT CUT OR MODIFY TRUSSES
- TRUSSES ARE SPACED 24" ON CENTER UNLESS OTHERWISE NOTED
- REFER TO THE INDIVIDUAL TRUSS DESIGN DRAWINGS FOR THE LOCATION OF LATERAL BRACING AND MULTI-PLY CONNECTION REQUIREMENTS.
- PER ANSITP1-2002 THE TRUSS ENGINEER IS RESPONSIBLE FOR TRUSS TO TRUSS CONNECTIONS AND TRUSS PLY TO PLY CONNECTIONS. THE TRUSS PLACEMENT PLAN RECOMMENDS TRUSS TO BEARING CONNECTIONS AND TRUSS TO BEAM CONNECTIONS WHICH SHALL BE REVIEWED BY THE BUILDING DESIGNER. IT IS THE RESPONSIBILITY OF THE BUILDING DESIGNER TO RESOLVE ALL ROOF FORCES ADEQUATELY TO THE FOUNDATION.

TOP LIVE LOAD: 20,000 lb/ft ²
TOP DEAD LOAD: 10,000 lb/ft ²
BOTTOM DEAD LOAD: 10,000 lb/ft ²
WIND SPEED: 120.0 mph

PROJECT: 182 BIRCHWOOD GROVE - ROOF			
CUSTOMER: KB HOME			
MODEL: 238.2338/B/RH			
QUOTE #:	PRINT DATE:	DRAWN BY:	SCALE: N.T.S



DEDICATED TO QUALITY AND EXCELLENCE
DUNN, NORTH CAROLINA, 28134
PHONE: 910-882-8400