

DN01 DO NOT cut, notch or drill flanges

DN04 DO NOT cut holes near bearing support

F05 23/32" min. plywood/OSB or rimboard closure

F05-A Inverted hanger

F06 Load bearing wall above (stacked over wall below)

F06-C Web stiffeners are not required when top flange is laterally supported by joist hanger.

F07 See Boise literature for vertical load capacity.

F07-A Note: Sheathing shall not span greater than rating

F08 Solid block all posts from above to bearing below.

F08-A Solid block all posts from above to bearing below.

F09 Load bearing wall above (stacked over wall below)

F10 Backer block (12" wide min.) Nail with 10-10d nails. Install tight to top flange.

F10-A Backer block (12" wide min.) Nail with 10-10d nails. Install tight to top flange.

F16-E Stiffeners are required on both sides of the web when:

- Hangers with side nailing.
- Any hanger with sides not containing the top flange of the joist.
- Web stiffener nailed with 3 - 3" (10d) nails for 9 1/2" and 11 7/8" joists, and 5 - 3" (10d) nails for 14" & 16" joists.

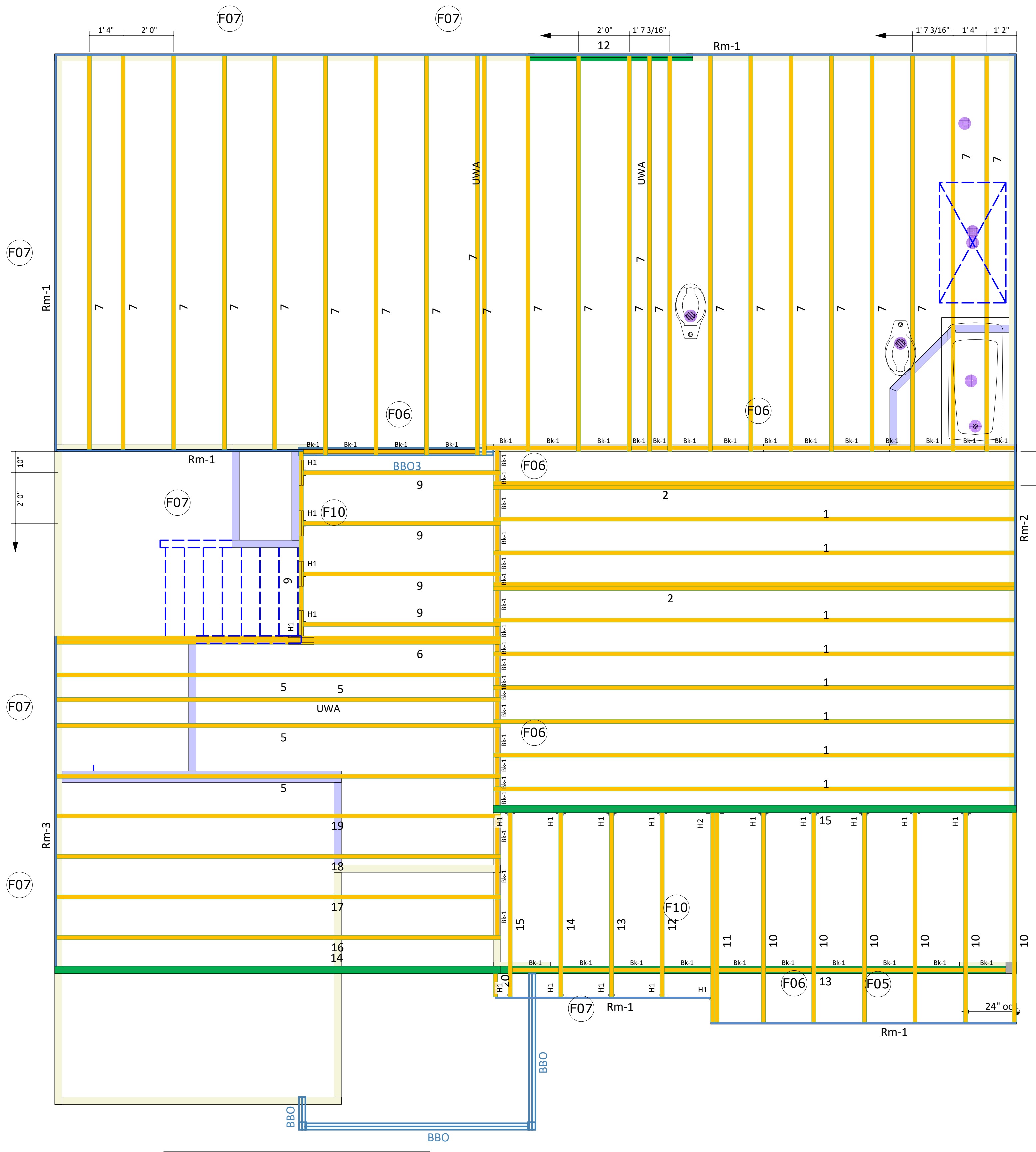
F58-B Double BCI Joist Connection

BCI Joist Series	Backer Block Thickness	Filler Block Thickness
5000s 1.8	3/4" or 7/8" wood panels	Two 3/4" wood panels or 2 x ___
6000s 1.8	1-1/8" or two 1/2" wood panels	2 x ___ + 5/8" or 3/4" wood panel
6500s 1.8	1-1/8" or two 1/2" wood panels	2 x ___ + 5/8" or 3/4" wood panel
60 2.0	1-1/8" or two 1/2" wood panels	2 x ___ + 5/8" or 3/4" wood panel
90 2.0	2 x ___ lumber	Double 2 x ___ lumber

Connection valid for all applications. Contact Boise EWP Engineering for specific conditions.

Products					
PlotID	Length	Product	Plies	Net Qty	Fab Type
1	21' 0"	14" BCI® 5000s-1.8	1	8	MFD
2	21' 0"	14" BCI® 5000s-1.8	2	4	MFD
16	18' 0"	14" BCI® 5000s-1.8	1	1	MFD
17	18' 0"	14" BCI® 5000s-1.8	1	1	MFD
18	18' 0"	14" BCI® 5000s-1.8	1	1	MFD
19	18' 0"	14" BCI® 5000s-1.8	1	1	MFD
5	18' 0"	14" BCI® 5000s-1.8	1	4	MFD
6	18' 0"	14" BCI® 5000s-1.8	2	2	MFD
7	16' 0"	14" BCI® 5000s-1.8	1	23	MFD
10	9' 0"	14" BCI® 5000s-1.8	1	6	FF
11	9' 0"	14" BCI® 5000s-1.8	2	2	MFD
12	8' 0"	14" BCI® 5000s-1.8	1	1	MFD
13	8' 0"	14" BCI® 5000s-1.8	1	1	MFD
14	8' 0"	14" BCI® 5000s-1.8	1	1	MFD
15	8' 0"	14" BCI® 5000s-1.8	1	1	MFD
9	8' 0"	14" BCI® 5000s-1.8	1	5	MFD
20	1' 0"	14" BCI® 5000s-1.8	1	1	MFD
12	8' 0"	1-3/4" x 9-1/4" VERSA-LAM® LVL 2.1E 3100 SP	2	2	FF
13	22' 0"	1-3/4" x 11-7/8" VERSA-LAM® LVL 2.1E 3100 SP	2	2	FF
15	22' 0"	1-3/4" x 14" VERSA-LAM® LVL 2.1E 3100 SP	2	2	FF
14	18' 0"	1-3/4" x 14" VERSA-LAM® LVL 2.1E 3100 SP	2	2	FF
Rm-1	12' 0"	1" x 14" BC RIM BOARD OSB	1	7	FF
Rm-2	12' 0"	1" x 14" BC RIM BOARD OSB	1	3	FF
Rm-3	12' 0"	1" x 14" BC RIM BOARD OSB	1	2	FF
Bk-1	2' 0"	14" BCI® 5000s-1.8	1	48	MFD

Connector Summary			
PlotID	Qty	Manuf	Product
H1	19	Simpson	IUS2.06/14
H2	1	Simpson	MIU4.75/14



Second Floor Layout

Indicates "NO CUT END" === Material to be Trimmed from OTHER END ONLY

***** ANY Concealed Flange Hangers MUST be installed PRIOR to Setting the Carried Members! *****

International Residential Code - R502.8.2 Engineered Wood Products - - - Cuts, notches and holes bored in trusses, laminated veneer lumber, glue-laminated members or I-joists are not permitted unless such penetrations are specifically considered in the design of the member or meet the manufacturers guidelines.

Dimensions to any obstructions are approximate and should be field verified. Any discrepancies will be reported prior to floor installation.

Builder or framer should review this material placement layout prior to beginning construction of floor system. This layout DOES NOT supersede the plan set.

Squash blocks shall be installed under all point loads, and are to be greater than or equal to the dimensions of the post transferring the load from above.

All materials, (EWP, hangers etc.) shall be installed per manufacturer specific installation guides.

Plan Information

Lot Number: 182 Birchwood Grove
Model: 2338 Slab
Builder: KB Homes
Boise BC FRAMER II / SAPHIRE Structure
Plan Date: 2/28/2020
Structural Date: 2/28/2020
Not To Scale
By: GO
Sheet: 2F
Current Date: Enter Current Date