

COMMENTS: _____

| LANDSCAPE POSITIONS | GROUP | TEXTURES | .1955 LTAR | CONSISTENCE MOIST | WET |
|---------------------|-------|---------------------|------------|--------------------|--------------------|
| R-RIDGE | I | S-SAND | 1.2 - 0.8 | VFR-VERY FRIABLE | NS-NON-STICKY |
| S-SHOULDER SLOPE | | LS-LOAMY SAND | | FR-FRIABLE | SS-SLIGHTLY STICKY |
| L-LINEAR SLOPE | II | SL-SANDY LOAM | 0.8 - 0.6 | FI-FIRM | S-STICKY |
| FS-FOOT SLOPE | | L-LOAM | | VFI-VERY FIRM | VS-VERY STICKY |
| N-NOSE SLOPE | III | SI-SILT | 0.6 - 0.3 | EFI-EXTREMELY FIRM | NP-NON-PLASTIC |
| H-HEAD SLOPE | | SIL-SILT LOAM | | SP-SLIGHTLY STICKY | |
| CC-CONCLAVE SLOPE | | CL-CLAY LOAM | | P-PLASTIC | |
| CV-CONVEX SLOPE | | SCL-SANDY CLAY LOAM | | VP-VERY PLASTIC | |
| T-TERRACE | IV | SIC-SILTY CLAY | 0.4 - 0.1 | | |
| FP-FLOOD PLAN | | C-CLAY | | | |
| | | SC-SANDY CLAY | | | |

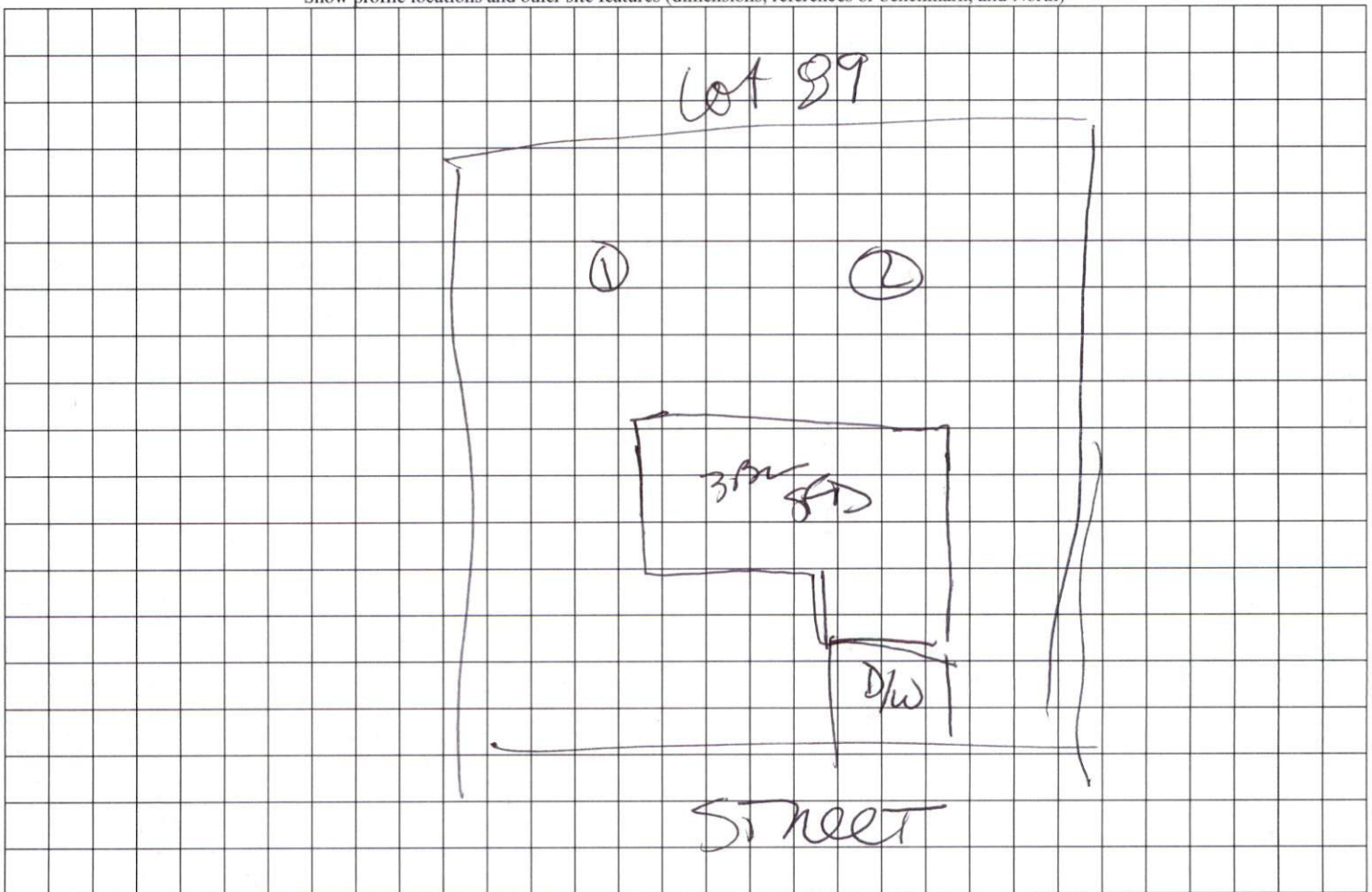
STRUCTURE

- SG-SINGLE GRAIN
- M- MASSIVE
- CR-CRUMB
- GR-GRANULAR
- SBK-SUBANGULAR BLOCKY
- ABK-ANGULAR BLOCKY
- PL-PLATY
- PR-PRISMATIC

MINERALOGY

- SLIGHTLY EXPANSIVE
- EXPANSIVE

Show profile locations and other site features (dimensions, references or benchmark, and North)

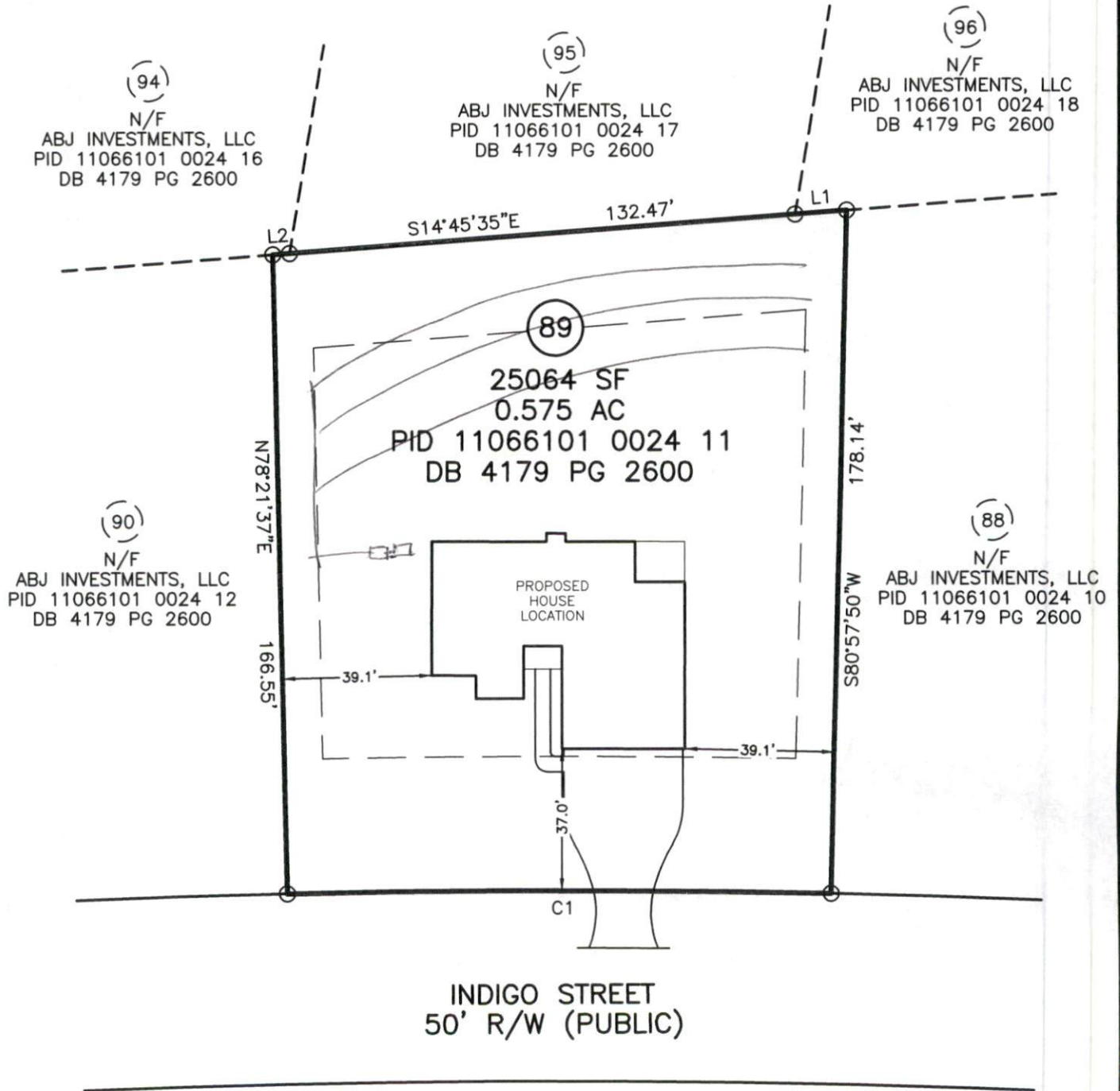


MINIMUM BUILDING SETBACKS
ZONING: R-30

| | |
|------------------|-----|
| FRONT..... | 35' |
| SIDE..... | 10' |
| CORNER SIDE..... | 20' |
| REAR..... | 25' |

| CURVE | RADIUS | ARC LENGTH | CHORD LENGTH | CHORD BEARING |
|-------|----------|------------|--------------|---------------|
| C1 | 3125.00' | 142.01' | 142.00' | N10°20'16"W |

| LINE | BEARING | DISTANCE |
|------|-------------|----------|
| L1 | S14°45'35"E | 13.47' |
| L2 | N14°45'35"W | 4.34' |



PLOT PLAN IS FOR PRECONSTRUCTION ONLY

- * PID: 11066101 024 11
- * SITE: 248 INDIGO STREET
LILLINGTON, NC 27546



IMPERVIOUS SURFACE TABLE

| | |
|---------------------|----------|
| HOUSE | 2976 SF |
| DRIVEWAY & WALKS | 1343 SF |
| TOTAL IMPERVIOUS | 4319 SF |
| TOTAL LOT AREA | 25064 SF |
| IMPERVIOUS COVERAGE | 17.23% |

PROPOSED DRIVEWAY CULVERT SIZE

MAXIMUM IMPERVIOUS