



**ROOF & FLOOR TRUSSES & BEAMS**

Reilly Road Industrial Park  
 Fayetteville, N.C. 28309  
 Phone: (910) 864-8787  
 Fax: (910) 864-4444

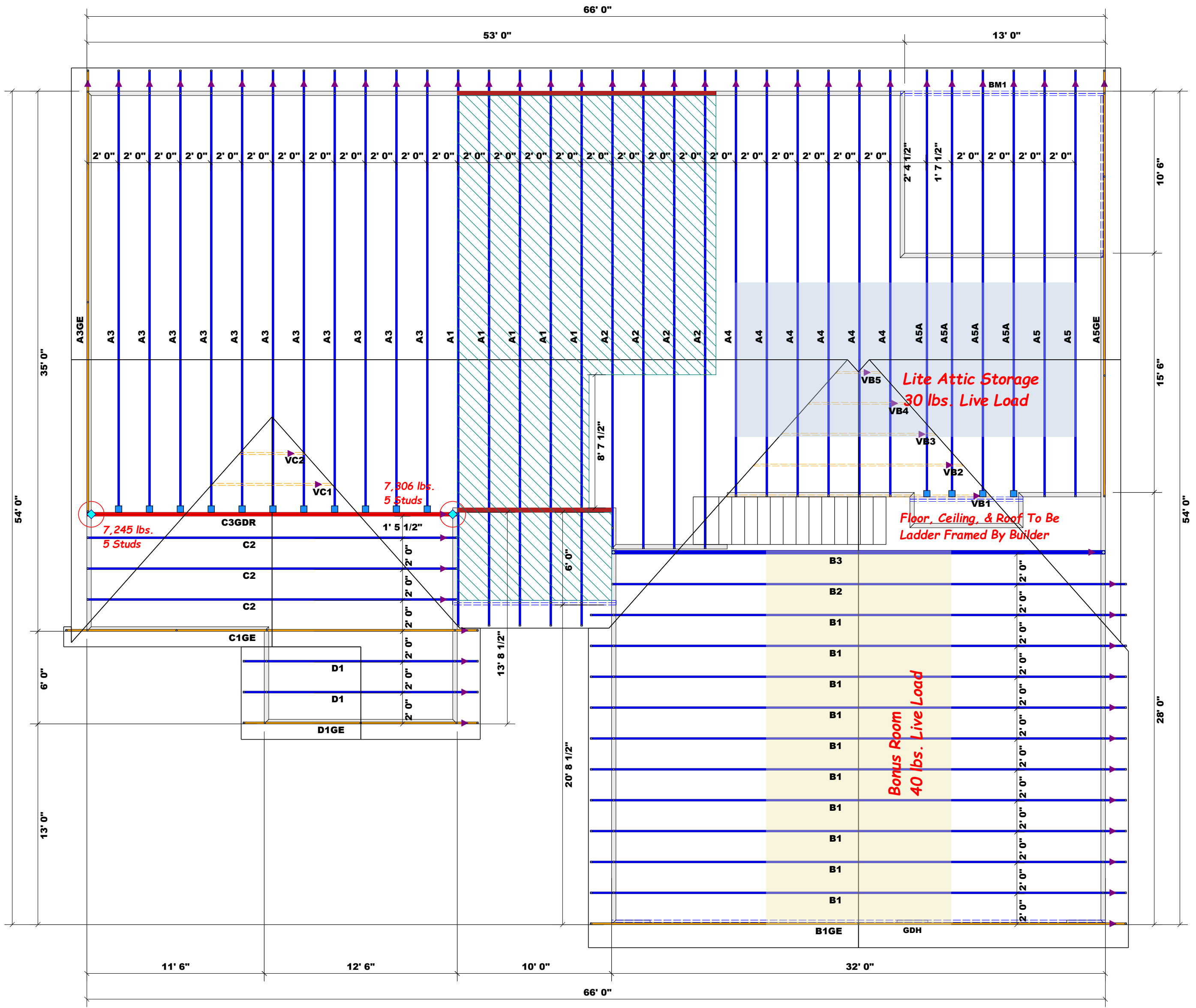
Bearing reactions less than or equal to 3000# are deemed to comply with the prescriptive Code requirements. The contractor shall refer to the attached Tables ( derived from the prescriptive Code requirements ) to determine the minimum foundation size and number of wood studs required to support reactions greater than 3000# but not greater than 15000#. A registered design professional shall be retained to design the support system for any reaction that exceeds those specified in the attached Tables. A registered design professional shall be retained to design the support system for all reactions that exceed 15000#.

Signature Curtis Quick  
 Curtis Quick

**LOAD CHART FOR JACK STUDS**

(BASED ON TABLES R502.5(1) & (b))  
 NUMBER OF JACK STUDS REQUIRED @ EA END OF HEADER/GIRDER

| END REACTION (UP TO) | REQ. STUDS FOR (1) 1/2" HEADER | END REACTION (UP TO) | REQ. STUDS FOR (1) 1/2" HEADER | END REACTION (UP TO) | REQ. STUDS FOR (1) 1/2" HEADER |
|----------------------|--------------------------------|----------------------|--------------------------------|----------------------|--------------------------------|
| 1700                 | 1                              | 2550                 | 1                              | 3400                 | 1                              |
| 3400                 | 2                              | 5100                 | 2                              | 6800                 | 2                              |
| 5100                 | 3                              | 7650                 | 3                              | 10200                | 3                              |
| 6800                 | 4                              | 10200                | 4                              | 13600                | 4                              |
| 8500                 | 5                              | 12750                | 5                              | 17000                | 5                              |
| 10200                | 6                              | 15300                | 6                              |                      |                                |
| 11900                | 7                              |                      |                                |                      |                                |
| 13600                | 8                              |                      |                                |                      |                                |
| 15300                | 9                              |                      |                                |                      |                                |



**Hatch Legend**

|  |                                      |
|--|--------------------------------------|
|  | Ceiling Height @ 10' 1-1/2"          |
|  | 1st Floor Bearing Walls @ 10' 1-1/2" |

**Connector Information**

| Sym | Product | Manuf | Qty | Supported Member | Header     | Truss      |
|-----|---------|-------|-----|------------------|------------|------------|
|     | HUS26   | USP   | 15  | NA               | 16d/3-1/2" | 16d/3-1/2" |
|     | HTW20   | USP   | 2   | NA               | 10d/1-1/2" | 10d/3"     |

**Beam Legend**

| PlotID | Length | Product                     | Plies | Net Qty | Fab Type |
|--------|--------|-----------------------------|-------|---------|----------|
| BM1    | 14' 0" | 1-3/4"x 9-1/4" LVL Kerto-S  | 2     | 2       | FF       |
| GDH    | 32' 0" | 1-3/4"x 11-7/8" LVL Kerto-S | 2     | 2       | FF       |

**All Truss Reactions are Less than 3,000 lbs. Unless Noted Otherwise.**

-- Denotes Reaction Greater than 3,000 lbs.

= Denotes Left End of Truss (Reference Engineered Truss Drawing)  
 Do Not Erect Trusses Backwards

**Truss Placement Plan**  
 SCALE: 3/16" = 1'

|                  |                    |                   |                      |
|------------------|--------------------|-------------------|----------------------|
| <b>BUILDER</b>   | Watermark Homes    | <b>CITY / CO.</b> | Lillington / Harnett |
| <b>JOB NAME</b>  | Lot 89 South Creek | <b>ADDRESS</b>    | Lot 89 South Creek   |
| <b>PLAN</b>      | Pinyon Pine        | <b>MODEL</b>      | Roof                 |
| <b>SEAL DATE</b> | Seal Date          | <b>DATE REV.</b>  | 03/31/23             |
| <b>QUOTE #</b>   | Quote #            | <b>DRAWN BY</b>   | Curtis Quick         |
| <b>JOB #</b>     | J0323-1472         | <b>SALES REP.</b> | Anthony Williams     |

THIS IS A TRUSS PLACEMENT DIAGRAM ONLY. These trusses are designed as individual building components to be incorporated into the building design at the specification of the building designer. See individual design sheets for each truss design identified on the placement drawing. The building designer is responsible for temporary and permanent bracing of the roof and floor system and for the overall structure. The design of the truss support structure including headers, beams, walls, and columns is the responsibility of the building designer. For general guidance regarding bracing, consult BCSI-B1 and BCSI-B3 provided with the truss delivery package or online @ sbcindustry.com