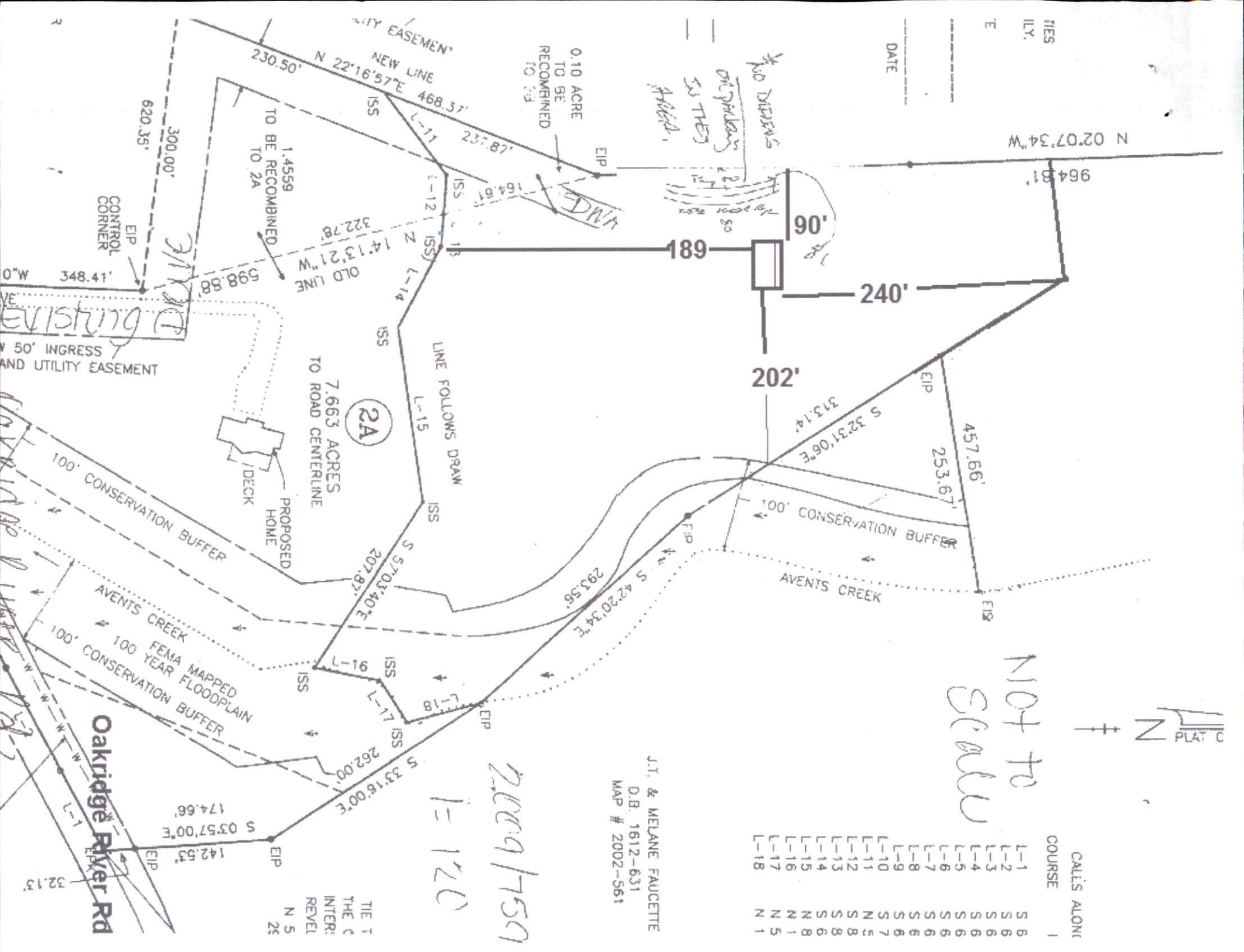


TIES
ILY.
E

DATE



N 02°07'34"W

964.81'

240'

202'

NOT TO SCALE



COURSE	CALLS ALONG
L-1	5 6
L-2	5 6
L-3	5 6
L-4	5 6
L-5	5 6
L-6	5 6
L-7	5 6
L-8	5 6
L-9	5 6
L-10	5 6
L-11	5 6
L-12	5 6
L-13	5 6
L-14	5 6
L-15	5 6
L-16	5 6
L-17	5 6
L-18	5 6

J.I. & MELANE FAUCETTE
D.B. 1612-631
MAP # 2002-561

2009/7509
1=120

TIE T
THE C
INTER:
REVEL
N 5
25

Oakridge River Rd

100' CONSERVATION BUFFER
AVENTS CREEK
100' CONSERVATION BUFFER
FEMA MAPPED
100' CONSERVATION BUFFER
100' CONSERVATION BUFFER

EXISTING DRIVE
50' INGRESS
AND UTILITY EASEMENT

NEW LINE
N 22°16'57"E 468.57'
230.50'
620.35'
300.00'

OLD LINE
14°13'21"W
598.88'
322.78'
1.4559
TO BE RECOMBINED
TO 2A

7.663 ACRES
2A
LINE FOLLOWS DRAW
L-15
L-14
L-12
L-11

PROPOSED HOME
DECK
207.87'
S 57°03'40"E
L-16
L-17
L-18

262.00'
S 33°16'00"E
174.66'
S 03°57'00"E
142.55'

32.13'

0.10 ACRE
TO BE
RECOMBINED
TO 2A

NO DIMENSIONS
DIP SYSTEMS
AS THEY
FIELD

DWA

189

313.14'

S 32°31'06"E

EIP

457.66'

253.67'

EIP

100' CONSERVATION BUFFER

AVENTS CREEK

293.56'

S 42°20'34"E

EIP

EIP

ISS

ISS

EIP

EIP

EIP

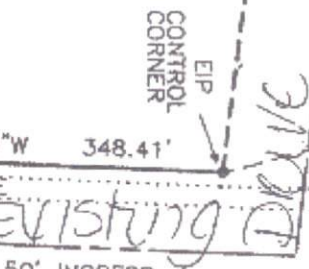
EIP

TO BE RECOMBINED
TO 2A

2A

7.663 ACRES
TO ROAD CENTERLINE

LINE FOLLOWS DRAW



EXISTING DRIVE

CONTROL CORNER

348.41'

0°W

620.35'

300.00'

230.50'

N 22°16'57"E

468.57'

237.87'

164.61'

189

240'

202'

313.14'

S 32°31'06"E

457.66'

253.67'

100' CONSERVATION BUFFER

AVENTS CREEK

293.56'

S 42°20'34"E

262.00'

S 33°16'00"E

174.66'

S 03°57'00"E

142.55'

32.13'

100' CONSERVATION BUFFER

AVENTS CREEK

100' CONSERVATION BUFFER

FEMA MAPPED
100' CONSERVATION BUFFER

100' CONSERVATION BUFFER

PROPOSED HOME
DECK

7.663 ACRES
TO ROAD CENTERLINE

LINE FOLLOWS DRAW

EXISTING DRIVE

CONTROL CORNER

348.41'

0°W

620.35'

300.00'

230.50'

N 22°16'57"E

468.57'

237.87'

164.61'

189

240'

202'

313.14'

S 32°31'06"E

457.66'

253.67'

100' CONSERVATION BUFFER

AVENTS CREEK

293.56'

S 42°20'34"E

262.00'

S 33°16'00"E

174.66'

S 03°57'00"E

142.55'

32.13'

100' CONSERVATION BUFFER

AVENTS CREEK

100' CONSERVATION BUFFER

FEMA MAPPED
100' CONSERVATION BUFFER

100' CONSERVATION BUFFER

PROPOSED HOME
DECK

7.663 ACRES
TO ROAD CENTERLINE

LINE FOLLOWS DRAW

EXISTING DRIVE

CONTROL CORNER

348.41'

0°W

620.35'

300.00'

230.50'

N 22°16'57"E

468.57'

237.87'

164.61'

189

240'

202'

313.14'

S 32°31'06"E

457.66'

253.67'

100' CONSERVATION BUFFER

AVENTS CREEK

293.56'

S 42°20'34"E

262.00'

S 33°16'00"E

174.66'

S 03°57'00"E

142.55'

32.13'

100' CONSERVATION BUFFER

AVENTS CREEK

100' CONSERVATION BUFFER

FEMA MAPPED
100' CONSERVATION BUFFER

100' CONSERVATION BUFFER

PROPOSED HOME
DECK

7.663 ACRES
TO ROAD CENTERLINE

LINE FOLLOWS DRAW

EXISTING DRIVE

CONTROL CORNER

348.41'

0°W

620.35'

300.00'

230.50'

N 22°16'57"E

468.57'

237.87'

164.61'

189

240'

202'

313.14'

S 32°31'06"E

457.66'

253.67'

100' CONSERVATION BUFFER

AVENTS CREEK

293.56'

S 42°20'34"E

262.00'

S 33°16'00"E

174.66'

S 03°57'00"E

142.55'

32.13'

100' CONSERVATION BUFFER

AVENTS CREEK

100' CONSERVATION BUFFER

FEMA MAPPED
100' CONSERVATION BUFFER

100' CONSERVATION BUFFER

PROPOSED HOME
DECK

7.663 ACRES
TO ROAD CENTERLINE

LINE FOLLOWS DRAW

EXISTING DRIVE

CONTROL CORNER

348.41'

0°W

620.35'

300.00'

230.50'

N 22°16'57"E

468.57'

237.87'

164.61'

189

240'

202'

313.14'

S 32°31'06"E

457.66'

253.67'

100' CONSERVATION BUFFER

AVENTS CREEK

293.56'

S 42°20'34"E

262.00'

S 33°16'00"E

174.66'

S 03°57'00"E

142.55'

32.13'

100' CONSERVATION BUFFER

AVENTS CREEK

100' CONSERVATION BUFFER

FEMA MAPPED
100' CONSERVATION BUFFER

100' CONSERVATION BUFFER

PROPOSED HOME
DECK

7.663 ACRES
TO ROAD CENTERLINE

LINE FOLLOWS DRAW

EXISTING DRIVE

CONTROL CORNER

348.41'

0°W

620.35'

300.00'

230.50'

N 22°16'57"E

468.57'

237.87'

164.61'

189

240'

202'

313.14'

S 32°31'06"E

457.66'

253.67'

100' CONSERVATION BUFFER

AVENTS CREEK

293.56'

S 42°20'34"E

262.00'

S 33°16'00"E

174.66'

S 03°57'00"E

142.55'

32.13'

100' CONSERVATION BUFFER

AVENTS CREEK

100' CONSERVATION BUFFER

FEMA MAPPED
100' CONSERVATION BUFFER

100' CONSERVATION BUFFER

PROPOSED HOME
DECK

7.663 ACRES
TO ROAD CENTERLINE

LINE FOLLOWS DRAW

EXISTING DRIVE

CONTROL CORNER

348.41'