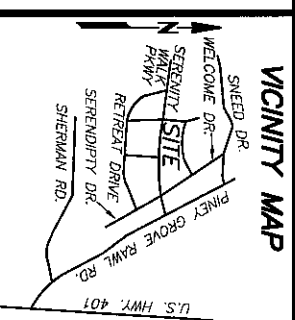
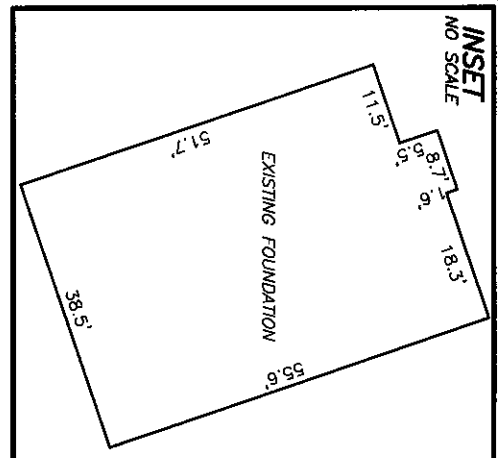
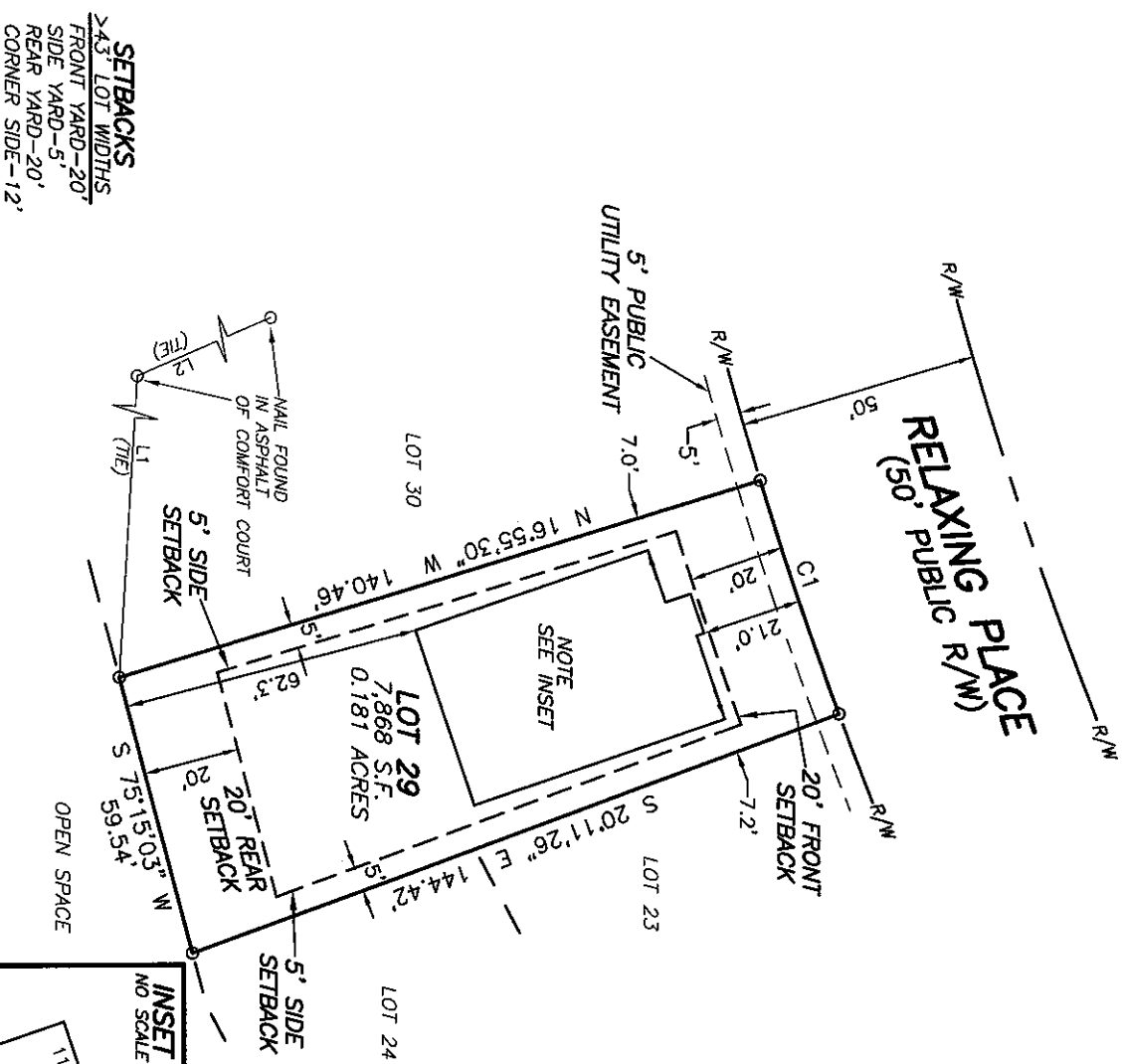
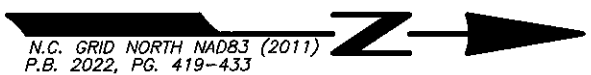


CURVE TABLE						
CURVE	DELTA	RADIUS	ARC	CHORD	TANGENT	CHORD BRC
C1	3°15'56"	900.00'	51.30'	51.29'	25.66'	N 71°26'32" E
LINE TABLE						
LINE	BEARING	DISTANCE				
L1	N 86°27'16" W	379.15'				
L2	N 23°34'04" W	110.25'				



NOT TO SCALE

- REFERENCES:
- D.B. 4165, PG. 506
PIN 0655-23-4831.000
PID 080655 0032 99
 - D.B. 4109, PG. 612



- NOTES:
- ALL EASEMENTS, RIGHTS OF WAY AND BOUNDARY INFORMATION TAKEN FROM P.B. 2022, PG 419-433 UNLESS OTHERWISE NOTED.
 - PROPERTY IS SUBJECT TO ALL EASEMENTS AND RESTRICTIONS OF RECORD. NO TITLE EXAMINATION HAS BEEN DONE BY ROBINSON & PLANTE, P.C.

NOTE:
RATIO OF PRECISION IS 1:10,000+, MISCLASURE WAS DISTRIBUTED BY THE COMPASS METHOD. THE DISTANCES ON THIS MAP ARE ADJUSTED HORIZONTAL GROUND UNLESS NOTED OTHERWISE. ALL AREAS ARE CALCULATED BY COORDINATE COMPUTATION.

LOT 29 SERENITY SUBDIVISION
PHASE 1
35 RELAXING PLACE
HARNETT COUNTY
FUQUAY-VARINA, N.C. 27526

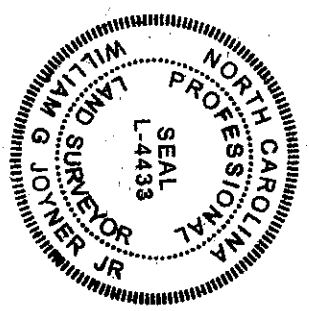
REFERENCE: PLAT BOOK 2022 PAGE 419-433.



FILE: ST10729FD

I CERTIFY THAT THIS MAP WAS DRAWN UNDER MY SUPERVISION FROM AN ACTUAL SURVEY MADE UNDER MY SUPERVISION DESCRIPTION RECORDED IN REFERENCES AS SHOWN THAT THE BOUNDARIES NOT SURVEYED ARE INDICATED AS DRAWN FROM INFORMATION IN THAT THE RATIO OF PRECISION IS 1:10,000, AND THAT THIS MAP MEET THE REQUIREMENTS OF THE STANDARDS OF PRACTICE FOR LAND SURVEYING IN NORTH CAROLINA (21 NCAC 56.16000), THIS 15th DAY OF MARCH 2023.

William G. Joyner
 PROFESSIONAL LAND SURVEYOR 4433



ROBINSON & PLANTE PC
 LAND SURVEYING
 C-2687
 970 TRINITY ROAD
 RALEIGH, N.C. 27607
 PHONE (919) 859-6030
 FAX (919) 859-6032

DATE: 3-13-23 SCALE: 1"=40'

FOUNDATION SURVEY FOR
DREES HOMES