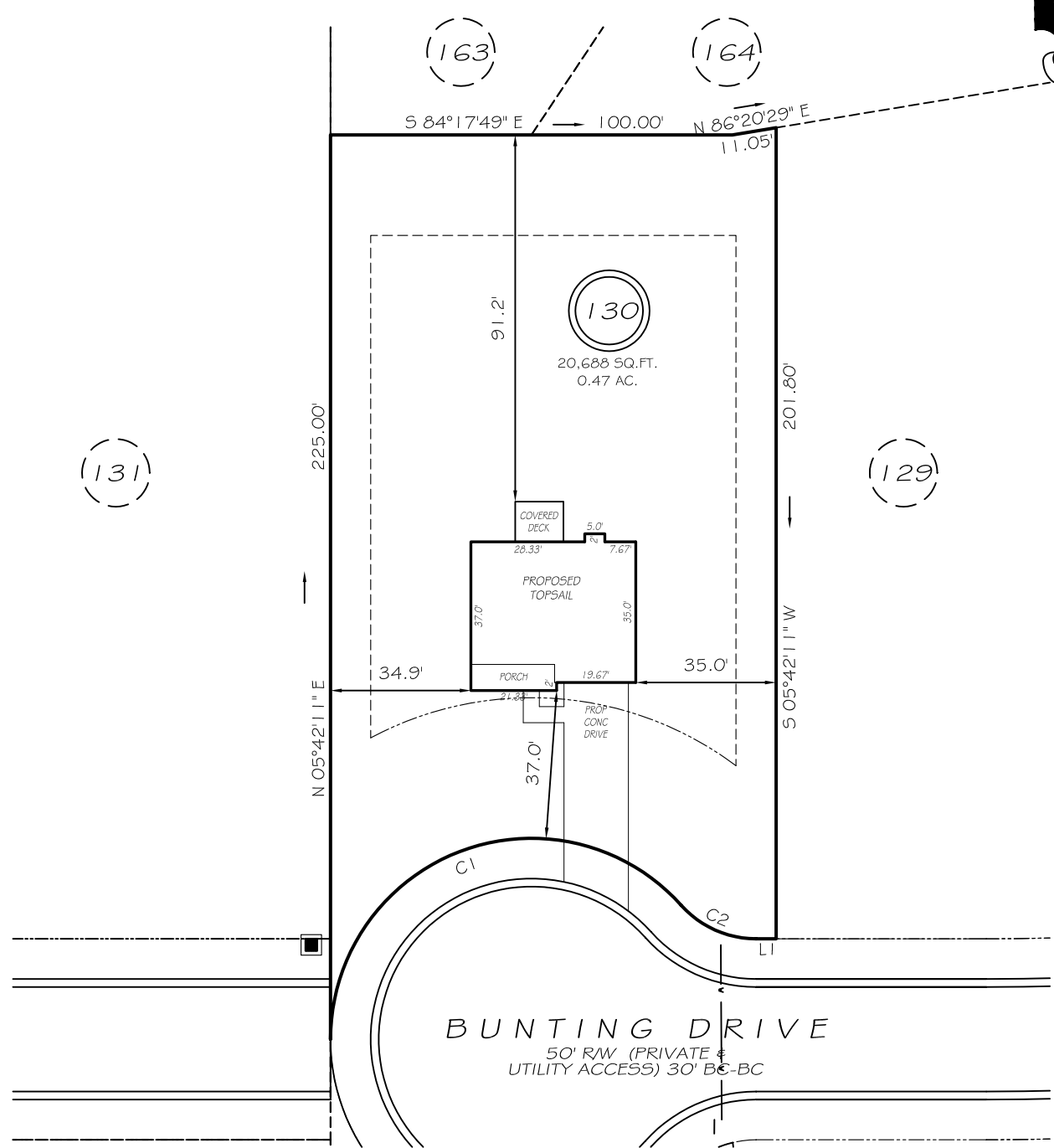


I, MICHAEL P. GRIFFIN, certify that under my direction and supervision this map was drawn from an actual field survey; that the error of closure of the survey as calculated by coordinates is 1: 10,000+; that the area shown hereon was calculated by coordinates.

Witness my hand and seal this day of MONTH 2023.

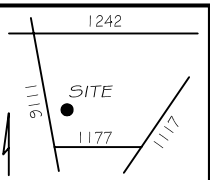
BK 2022 PG 235
BK 2021 PG 159-161
HARNETT CO. REGISTRY



SETBACKS

FRONT	35'
REAR	25'
SIDE	10'
CORNER	20'

L1 S84°17'49"E 5.00'
C1 R=50.00' L=120.59' N74°47'52"E 93.42'
C2 R=25.00' L=21.03' S60°12'08"E 20.41'



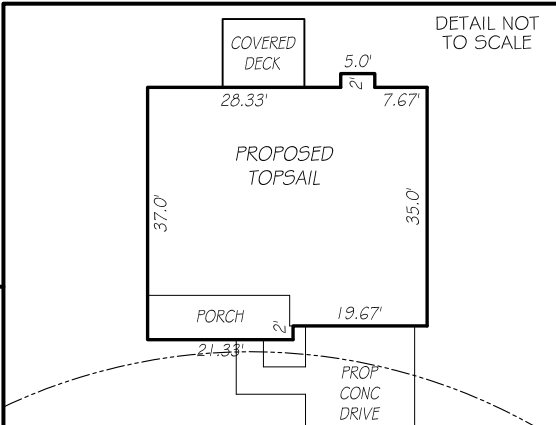
LEGEND

EIP	EXISTING IRON PIPE	FES	FLARED END SECTION
IP5	IRON PIPE SET	WM	WATER METER
RW	RIGHT OF WAY	CO	CLEAN OUT
N/F	NOW OR FORMERLY	FH	FIRE HYDRANT
EIS	EXISTING IRON STAKE	CB	CATCH BASIN

PRELIMINARY
NOT FOR RECORDATION,
SALES OR CONVEYANCE

SETBACKS

FRONT	35'
REAR	25'
SIDE	10'
CORNER	20'



GLS GRIFFIN LAND SURVEYING, INC.
P. O. BOX 148
FUQUAY-VARINA, NC 27526
(919) - 567 - 1963

DRAWN BY KDF	DATE 1/10/23
CHECKED BY MPG	SCALE 1" = 40'

PLOT PLAN
FOR
H & H HOMES

OAKMONT
LOT 130
BUNTING DRIVE
NORTH CAROLINA
HARNETT COUNTY BARBECUE TOWNSHIP