



COMMENTS: \_\_\_\_\_

<u>LANDSCAPE POSITIONS</u>	<u>GROUP</u>	<u>TEXTURES</u>	<u>.1955 LTAR</u>	<u>CONSISTENCE MOIST</u>	<u>WET</u>
R-RIDGE	I	S-SAND	1.2 - 0.8	VFR-VERY FRIABLE	NS-NON-STICKY
S-SHOULDER SLOPE		LS-LOAMY SAND		FR-FRIABLE	SS-SLIGHTLY STICKY
L-LINEAR SLOPE	II	SL-SANDY LOAM	0.8 - 0.6	FI-FIRM	S-STICKY
FS-FOOT SLOPE		L-LOAM		VFI-VERY FIRM	VS-VERY STICKY
N-NOSE SLOPE	III	SI-SILT	0.6 - 0.3	EFI-EXTREMELY FIRM	NP-NON-PLASTIC
H-HEAD SLOPE		SIL-SILT LOAM		SP-SLIGHTLY STICKY	
CC-CONCLAVE SLOPE		CL-CLAY LOAM		P-PLASTIC	
CV-CONVEX SLOPE		SCL-SANDY CLAY LOAM		VP-VERY PLASTIC	
T-TERRACE	IV	SIC-SILTY CLAY	0.4 - 0.1		
FP-FLOOD PLAN		C-CLAY			
		SC-SANDY CLAY			

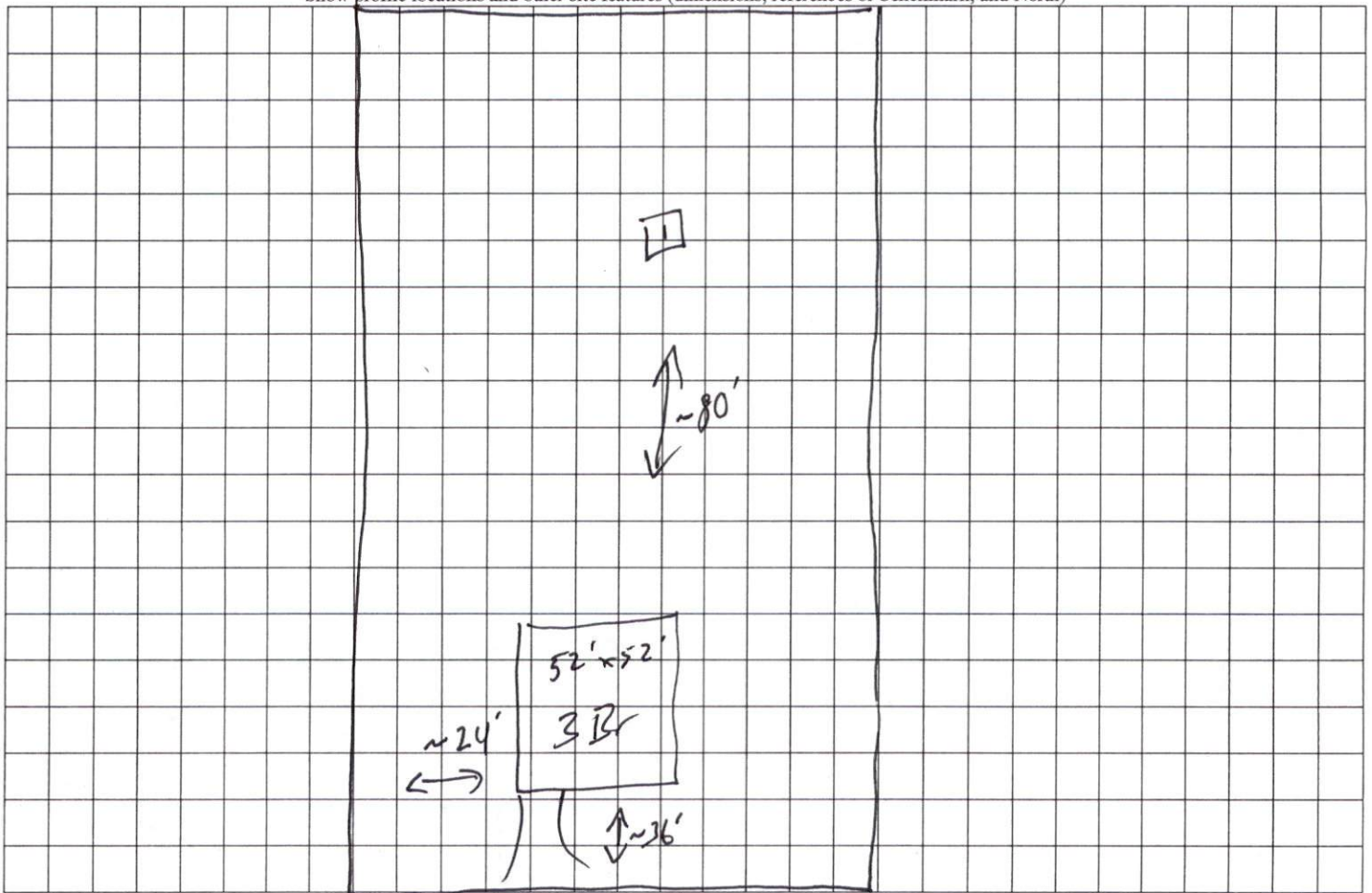
STRUCTURE

- SG-SINGLE GRAIN
- M- MASSIVE
- CR-CRUMB
- GR-GRANULAR
- SBK-SUBANGULAR BLOCKY
- ABK-ANGULAR BLOCKY
- PL-PLATY
- PR-PRISMATIC

MINERALOGY

- SLIGHTLY EXPANSIVE
- EXPANSIVE

Show profile locations and other site features (dimensions, references or benchmark, and North)



← Double Barrel ST →