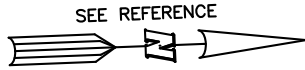


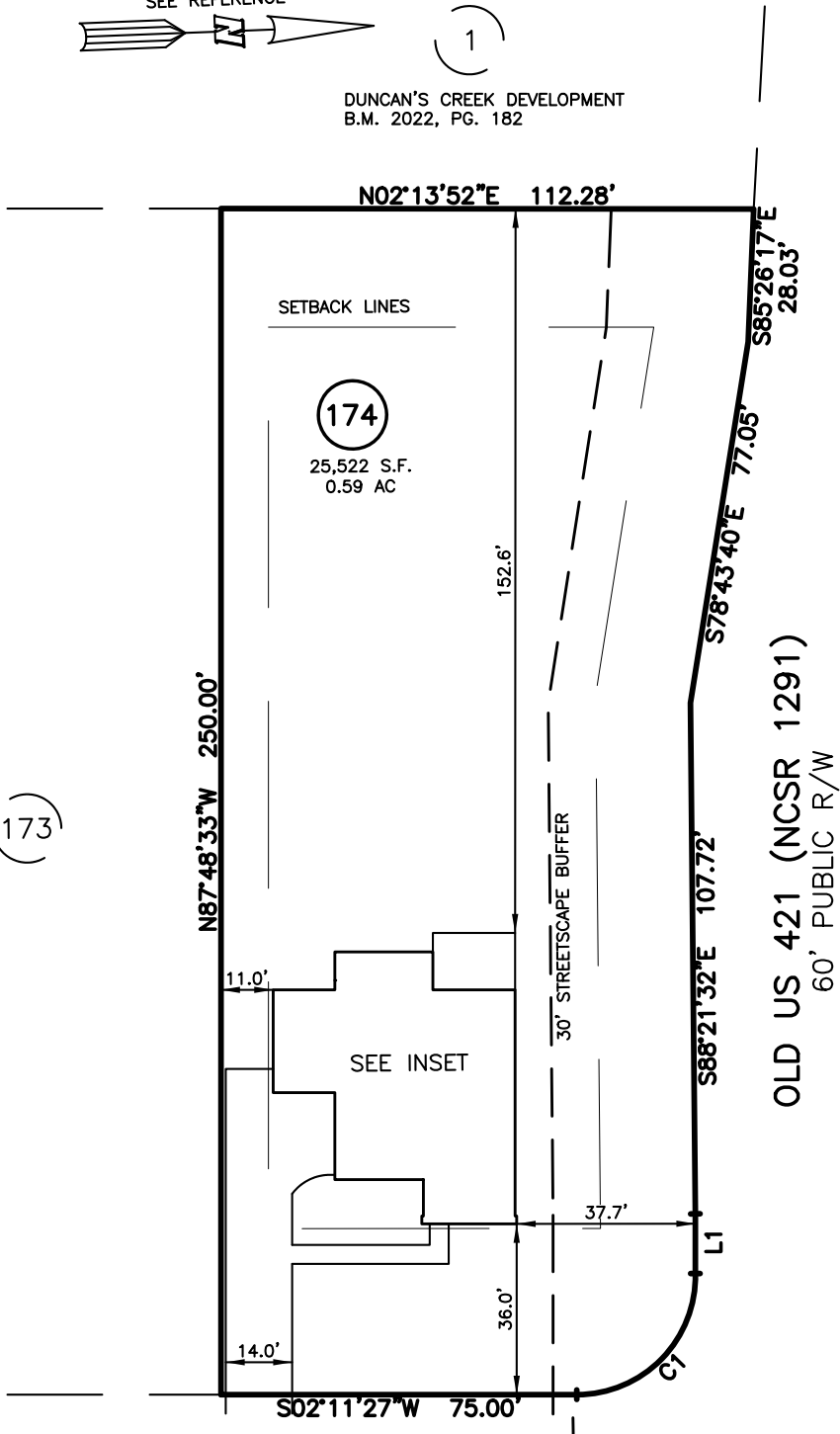
PLOT PLAN FOR  
**NEW HOME INC.**  
 20 DUNCAN CREEK ROAD  
 LOT 174, DUNCAN'S CREEK PHASE 1  
 UPPER LITTLE CREEK TOWNSHIP, HARNETT COUNTY, NORTH CAROLINA



DUNCAN'S CREEK DEVELOPMENT  
 B.M. 2022, PG. 182

- LEGEND**
- ◻ AIR CONDITIONER
  - BC BACK OF CURB
  - BFP BACK FLOW PREVENTER
  - CLEANOUT
  - ◻ CURB INLET
  - DHS DRILL HOLE SET
  - ECM EXISTING CONCRETE MONUMENT
  - EDH EXISTING DRILL HOLE
  - EIS EXISTING IRON STAKE
  - EIP EXISTING IRON PIPE
  - EM ELECTRIC METER
  - EPK EXISTING PK NAIL
  - ES ELECTRIC STUB
  - FLARED END SECTION
  - FIRE HYDRANT
  - FIBER OPTIC PEDESTAL
  - GM GAS METER
  - GUY
  - INV. INVERT
  - IPS IRON PIPE SET
  - IRS IRON ROD SET
  - LIGHT POLE
  - MNS MAGNETIC NAIL SET
  - ⊗ MANHOLE SANITARY SEWER
  - ⊗ MANHOLE STORM SEWER
  - OHV OVERHEAD WIRES
  - PKS PK NAIL SET
  - PNS POINT NOT SET
  - RRS RAIL ROAD SPIKE
  - TELEPHONE PEDESTAL
  - TRANSFORMER
  - CABLE TV PEDESTAL
  - UTILITY POLE
  - WATER METER
  - WATER VALVE
  - YARD INLET
  - ( ) FIELD MEASUREMENT

(173)



**DUNCAN CREEK ROAD**  
 50' PUBLIC R/W

**SETBACK INFO**

FRONT:	35'
REAR:	25'
SIDES:	10'
CORNER SIDE:	20'

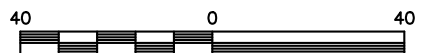
LINE	BEARING	DISTANCE
L1	S87°48'33"E	12.71'

CURVE	RADIUS	ARC LENGTH	CHORD LENGTH	CHORD BEARING	DELTA ANGLE
C1	25.00'	39.80'	35.73'	N43°24'18"W	91°13'01"

IMPERVIOUS SURFACES	
HOUSE	2,150 S.F.
WALK & DRIVE	1,260 S.F.
PORCH	210 S.F.
TOTAL	3,620 S.F.

**REFERENCES:**

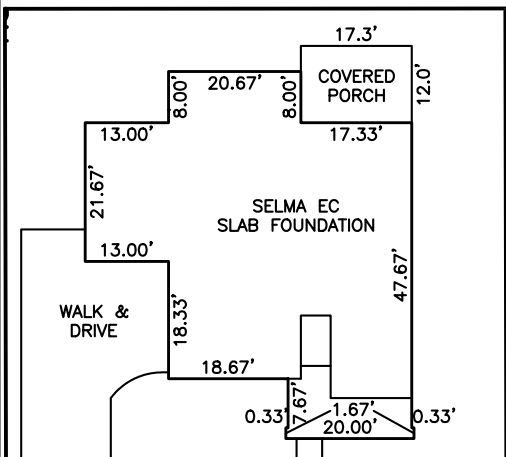
P.B. 2022, PGS 594-596



SCALE: 1" = 40'

**NOTES**

1. THIS SURVEY SUBJECT TO ANY FACTS THAT MAY BE DISCLOSED BY A FULL AND ACCURATE TITLE SEARCH.
2. THIS MAP MAY NOT BE A CERTIFIED SURVEY AND HAS NOT BEEN REVIEWED BY A LOCAL GOVERNMENT AGENCY FOR COMPLIANCE WITH ANY APPLICABLE LAND DEVELOPMENT REGULATIONS AND HAS NOT BEEN REVIEWED FOR COMPLIANCE WITH RECORDING REQUIREMENTS FOR PLATS.



INSET: SCALE: 1"=30'

**PLOT PLAN**  
 PRELIMINARY PLAT- NOT FOR RECORDATION,  
 CONVEYANCE OR SALES

REV CODE: 1.FLIP, 2.PLAN, 3.ROTATE, 4.MOVE, 5.SS  
 6.SEVERAL OF ABOVE, 7.LAND FEATURE, 8. OTHER

DATE: JAN. 23, 2023

F.B. \_\_\_\_\_

**RWK, PA**

**ENGINEERING ~ SURVEYING**

CORPORATE LICENSE: C-1771  
 101 W. MAIN ST., SUITE 202  
 GARNER, NC 27529  
 PHONE (919) 779-4854  
 FAX (919) 779-4056