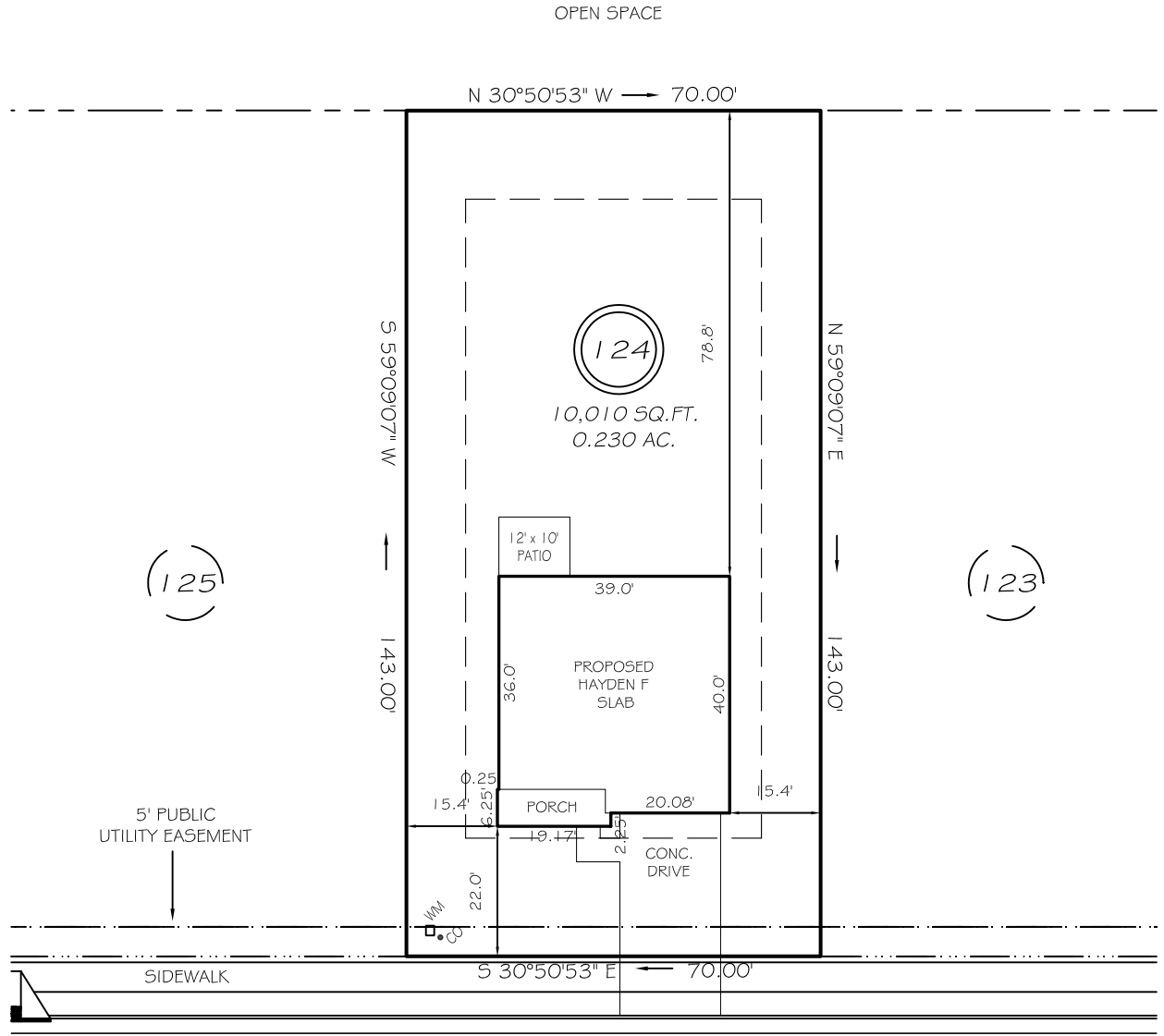
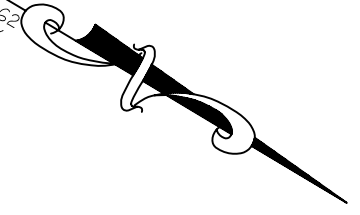


I, MICHAEL P. GRIFFIN, certify that under my direction and supervision this map was drawn from an actual field survey; that the error of closure of the survey as calculated by coordinates is 1: 10,000+; that the area shown hereon was calculated by coordinates.

Witness my hand and seal this day of MONTH 2023.

BM 2022 PGS 458-462  
HARNETT CO. REGISTRY



WINTERBERRY WAY  
50' PUBLIC RW & UTILITY

IMPERVIOUS AREAS

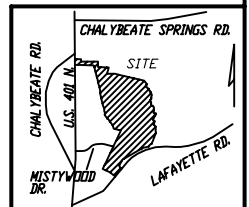
HOUSE	1604 SQ. FT.
DRIVE & WALKS	450 SQ. FT.
PATIO	120 SQ. FT.
<b>TOTAL</b>	<b>2174 SQ. FT.</b>
ALLOWED	3000 SQ. FT.

SETBACKS

FRONT	20'
REAR	15'
SIDE	10'
CORNER SIDE	15'

LEGEND

EIP	EXISTING IRON PIPE	MH	MANHOLE
IPS	IRON PIPE SET	WM	WATER METER
R/W	RIGHT OF WAY	CO	CLEAN OUT
N/F	NOW OR FORMERLY	FH	FIRE HYDRANT
EIS	EXISTING IRON STAKE	CB	CATCH BASIN



**PRELIMINARY**  
NOT FOR RECORDATION,  
SALES OR CONVEYANCE



GRIFFIN LAND SURVEYING, INC.

P. O. BOX 148  
FUQUAY-VARINA, NC 27526  
(919) - 567-1963

PLOT PLAN  
FOR

**D. R. HORTON**

WOODGROVE

LOT 124

95 WINTERBERRY WAY

NORTH CAROLINA

HARNETT CO. HECTOR'S CREEK TWSHP

DRAWN BY **KDF**

DATE **1/17/23**

CHECKED BY **MPG**

SCALE **1" = 30'**