

General Notes:
 - Per ANSI/TPI 1-2002 all " Truss to Wall" connections are the responsibility of the Building Designer, not the Truss Manufacturer.

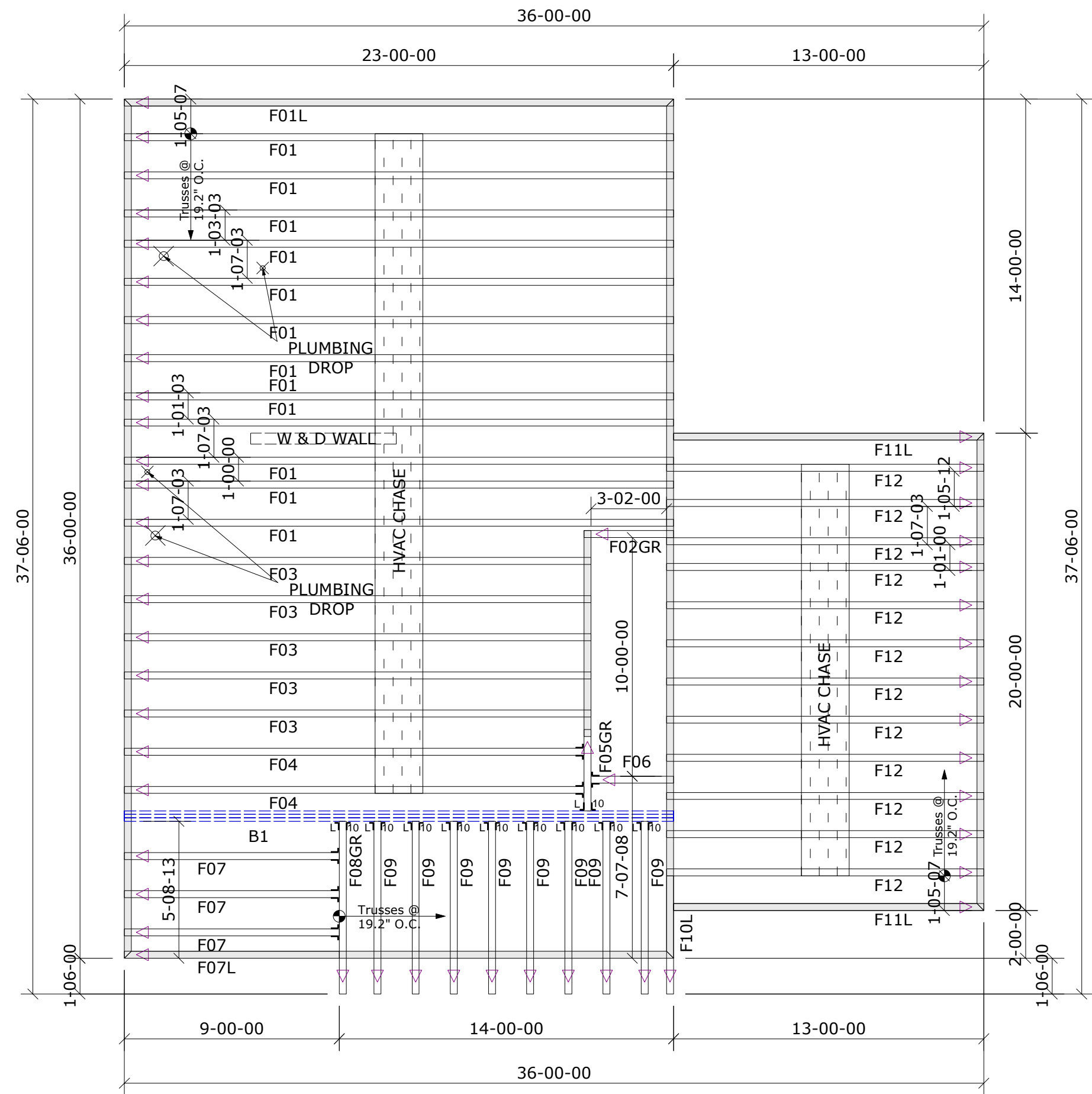
- Dimensions are Feet-Inches- Sixteenths.
- Trusses are to be 24" o.c. unless noted otherwise (U.N.O.)
- Trusses are not designed to support brick U.N.O.
- Do not cut or modify trusses without first contacting Builders FirstSource.
- Immediately contact Builders FirstSource if trusses are damaged.

Connection Notes:
 - All hangers are to be Simpson or equivalent U.N.O.
 - Use Manufacturer's specifications for all hanger connections U.N.O.
 - Use 10d x 1 1/2" Nails in hanger connections to single ply roof girder trusses.

Floor Notes:
 - Shift truss as required to avoid plumbing traps.
 - Installation Contractor and/or Field Supervisor are to verify all dimensions, trap locations, and options prior to installation

Dimension Notes:
 - Drawing not to scale. Do not scale dimensions

NOTE: LEFT END OF TRUSS AS SHOWN ON TRUSS DETAIL DRAWINGS ARE INDICATED BY TRIANGLE ICONS. △



Hanger List		All Tie Downs H2.5A Unless noted	
10	LUS410		
6	THA422	J L	

Beam List	
B1=(3)	1-3/4"x16"x24' LVL

NEW HOME INC.
 WILSON Elev: A/B

DUNCAN'S CREEK
 WAKE CO. NC Lot: 106

2nd FLOOR/GARAGE RIGHT
Appwright #

Code: IRC 2015
Loading:
 T.C.L.L. 40.0 lb/ft2
 T.C.D.L. 10.0 lb/ft2

Designed By: MPH
Layout: AB2FR
L/O Date: 11/10/22
Wind:
 M.P.H. 115 mph
 Exposure Category B

Revision History
 Rev1: xx/xx/xx
 Rev2: xx/xx/xx
 Rev3: xx/xx/xx
Pick Ticket: ---
Sales No: ---
Job No: ---
Acct No: ---

Hatch Legend	
	Attic Room
	Volume Ceiling
	Stick Framing

