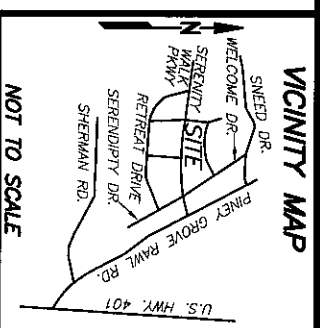


CURVE TABLE

CURVE	DELTA	RADIUS	ARC	CHORD	TANGENT	CHORD BRG
C1	25°26'11"	50.00'	22.20'	22.02'	11.28'	N 32°17'51" W

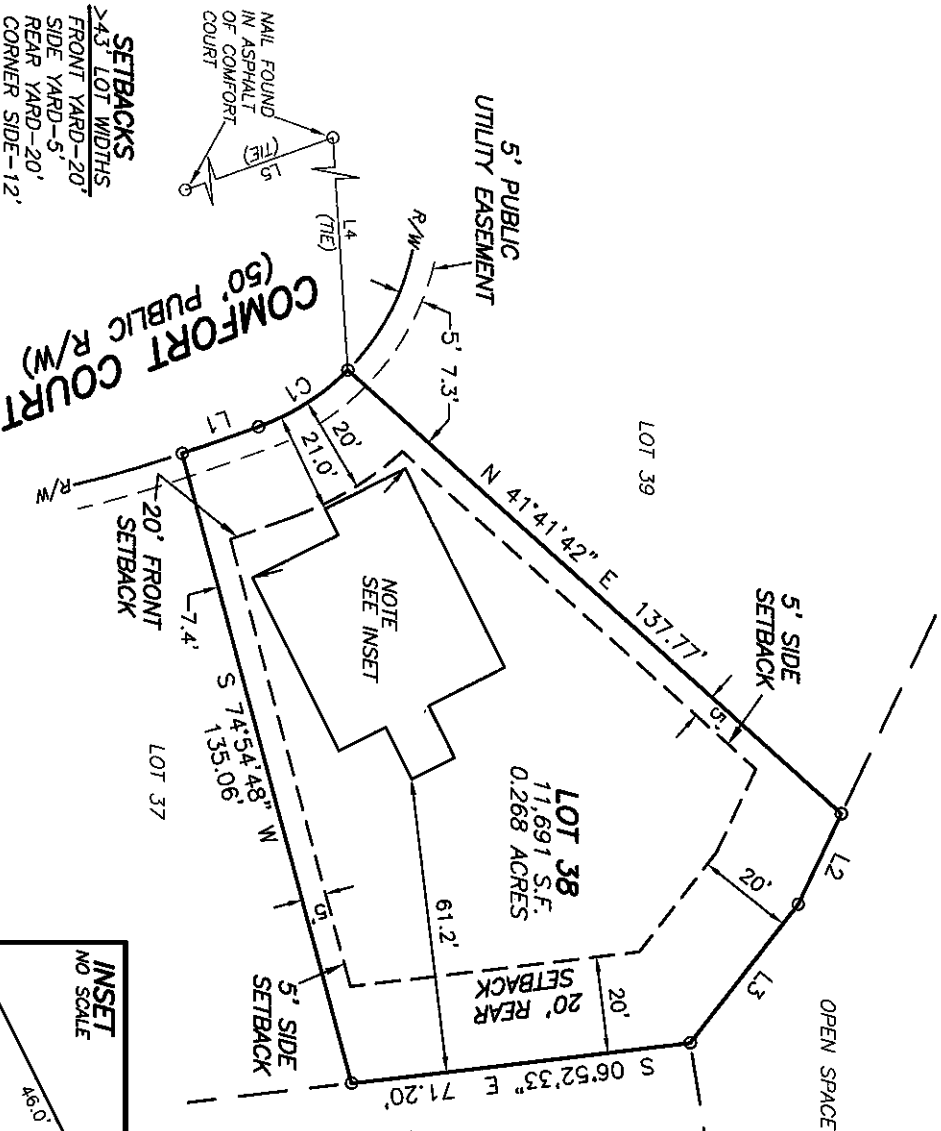
LINE TABLE

LINE	BEARING	DISTANCE
L1	N 19°34'44" W	12.67'
L2	S 64°25'19" E	20.80'
L3	S 52°02'16" E	36.59'
L4	S 86°26'25" W	57.98'
L5	S 19°32'39" E	330.36'

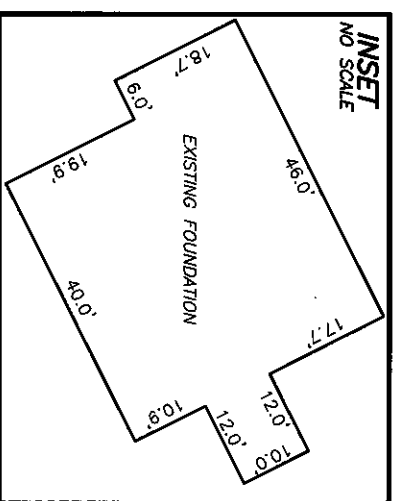


NOT TO SCALE

- REFERENCES:
- D.B. 4165, PG. 506
PIN 0655-23-1908;000
PID 080655 0032 40
 - D.B. 4109, PG. 612



N.C. GRID NORTH NAD83 (2011)
P.B. 2022, PG. 434-448



NOTES:

- ALL EASEMENTS, RIGHTS OF WAY AND BOUNDARY INFORMATION TAKEN FROM P.B. 2022, PG. 434-448 UNLESS OTHERWISE NOTED.
- PROPERTY IS SUBJECT TO ALL EASEMENTS AND RESTRICTIONS OF RECORD. NO TITLE EXAMINATION HAS BEEN DONE BY ROBINSON & PLANTE, P.C.

NOTE:
RATIO OF PRECISION IS 1:10,000±. MISCLOSEURE WAS DISTRIBUTED BY THE COMPASS METHOD. THE DISTANCES ON THIS MAP ARE ADJUSTED HORIZONTAL GROUND UNLESS NOTED OTHERWISE. ALL AREAS ARE CALCULATED BY COORDINATE COMPUTATION.

LOT 38 SERENITY SUBDIVISION
PHASE 1
58 COMFORT COURT
HARNETT COUNTY
FUQUAY-VARINA, N.C. 27526

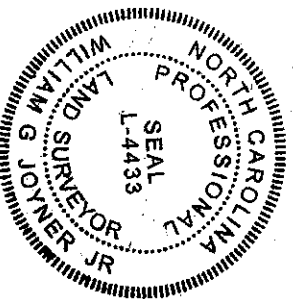
REFERENCE: PLAT BOOK 2022 PAGE 434-448.



FILE: STY10138FD

I CERTIFY THAT THIS MAP WAS DRAWN UNDER MY SUPERVISION FROM AN ACTUAL SURVEY MADE UNDER MY SUPERVISION DESCRIPTION RECORDED IN REFERENCES AS SHOWN; THAT THE BOUNDARIES NOT SURVEYED ARE INDICATED AS DRAWN FROM INFORMATION IN THIS MAP MEET THE REQUIREMENTS OF THE STANDARDS OF PRACTICE FOR LAND SURVEYING IN NORTH CAROLINA (21 NCAC 56.16000). THIS 23rd DAY OF MARCH, 2023.

William G. Joyner Jr.
PROFESSIONAL LAND SURVEYOR L4433



FOUNDATION SURVEY FOR DREES HOMES

ROBINSON & PLANTE PC
LAND SURVEYING
C-2687
970 TRINITY ROAD
RALEIGH, N.C. 27607
PHONE (919) 859-6030
FAX (919) 859-6032

DATE: 3-22-23

SCALE: 1"=40'