

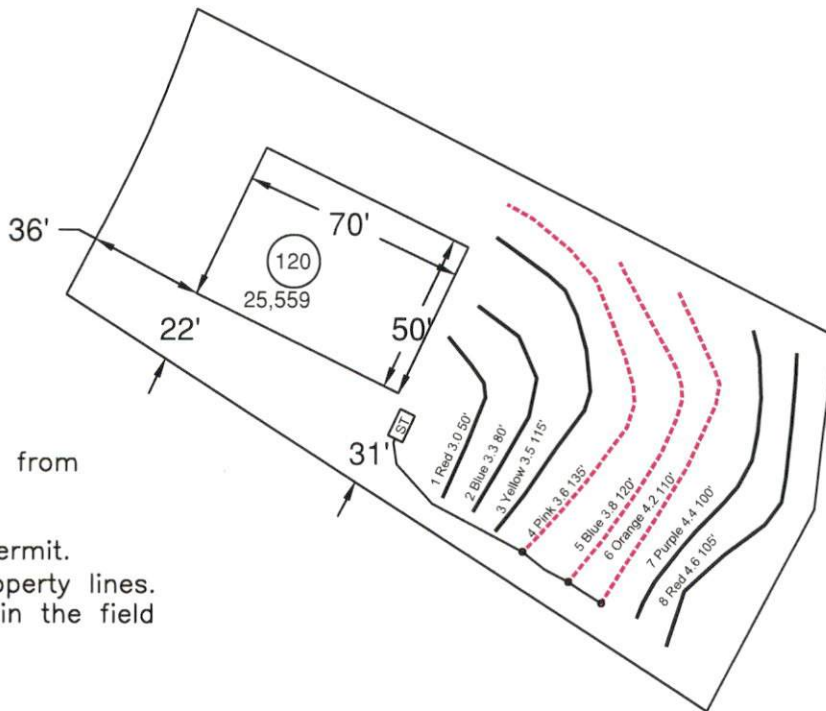




System: 
 Repair: 



- *Keep tanks and drain lines 10' from property lines.
- *Not a survey.
- *Not a guarantee of a septic permit.
- *Keep supply lines >5' from property lines.
- *Some lines are flagged longer in the field than lengths indicate.
- *No grading septic area.

System: Gravity to Serial Dist.
 Lines: 4-6, (365')
 Accepted Status System
 0.4 Soil LTAR

Repair: Gravity to serial Dist.
 Lines: 4-6, (450')
 Accepted Status System
 0.4 Soil LTAR

GRAPHIC SCALE

1" = 60'



Central Carolina Soil Consulting, PLLC
 1900 South Main Street, Suite 110
 Wake Forest, North Carolina 27587
 Phone (919)569-6704 Fax (919)569-6703

4-Bedroom Septic Layout
 Lot 120, Birchwood Subdivision
 Harnett County, North Carolina

Job# : 3753

Drawn By : LW

Date : 7/25/2022

Revision: