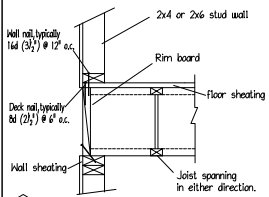


Attach rim board to joint w/1-100 box nail top & bottom of joint.



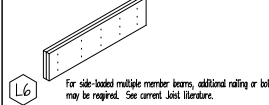
For information on lateral load capacity refer to literature or local dealership.

Must have 1 3/4" minimum joist bearing at ends.

CONNECTION OF MULTIPLE PIECES OF TOP-LOADED BEAMS

LVL # PSL (1 3/4" Width Pieces)

- Minimum of 2 rows 16d (3 1/2") nails at 12" oc.
- Minimum of 3 rows 16d (3 1/2") nails at 12" oc. for 14", 16", 18" beams.
- Multiple pieces of LVL # PSL can be nailed or bolted together to form a header or beam of the required size, up to a maximum width of 7 inches. Minimum of 2 rows 1/2" bolts at 24" oc. staggered.



For side-loaded multiple member beams, additional nailing or bolting may be required. See current Joist literature.

ENGINEERED WOOD MATERIAL LIST

SCHUMACHER HOMES
RUIZ-DEVANE JOB
2ND FLOOR I-JOIST PLACEMENT PLAN

MARK	QTY	CUT LENGTH	DESCRIPTION
14	1	14'-0"	2" x 11 3/8" BCI 5000
15	15	15'-0"	2" x 11 3/8" BCI 5000
17	15	17'-0"	2" x 11 3/8" BCI 5000
34	9	34'-0"	2" x 11 3/8" BCI 5000 (Total 800')

BEAMS AND HEADERS

LVL#	QTY	UNIT	DESCRIPTION
LVL1	2	8'-0"	1 3/4" x 11 3/8" LVL 2.0E (Flush)
LVL2	2	8'-0"	1 3/4" x 11 3/8" LVL 2.0E (Flush)
LVL3	2	10'-0"	1 3/4" x 11 3/8" LVL 2.0E (Flush)

ACCESSORIES & OTHER MATERIALS (Simpson Hangers)

ITEM	QTY	UNIT	DESCRIPTION
11 7/8" Rim	105	LF	1 1/2" x 11 3/8" Rim 9 pcs@12" or 7 pcs@16"
Hb6	34	PCS	IUS2.06/11.88 Single Face Hnt Hanger
BCGUIDE	1	PCS	BCI Installation Guide
BCLAYOUT	1	PCS	BCI Placement Layout

SEE MATERIAL LIST FOR DEPTH, SERIES & LENGTH

INDICATED I-JOIST
INDICATED TYPED/STANDARD FOR. LVL
INDICATED FLOOR-JOIST LVL
INDICATED PARALLEL PCL
INDICATED BLUE-LINE

INDICATES A SECTION FROM THE INSTALLATION GUIDE SETTING IS ALSO SHOWN ON THIS SHEET

LOAD BEARING WALL ABOVE = |||
BEAM BY CHAINS
EXTRA JOIST ABOVE
EXTRA JOIST (1) UNDER WALL
DOUBLE JOIST (2)
TYPICAL BRACKET PANEL
1 JOIST BRACKET PANEL
1 JOIST OR 1 JOIST WITH ROWS
CONCENTRATED POINT LOAD FROM ABOVE
DEPT REPORT
FLUSH BEAM

THIS SHOP DRAWING IS BASED ON THE FOLLOWING

PROJECT LOCATION :
PROJECT NUMBER :
ARCHITECT DWG# BY :
ARCHITECT REVISION :
STRUCTURAL REVIEW BY :
DATE :

REV	BY	DATE / DESC.
SD		3/27/23

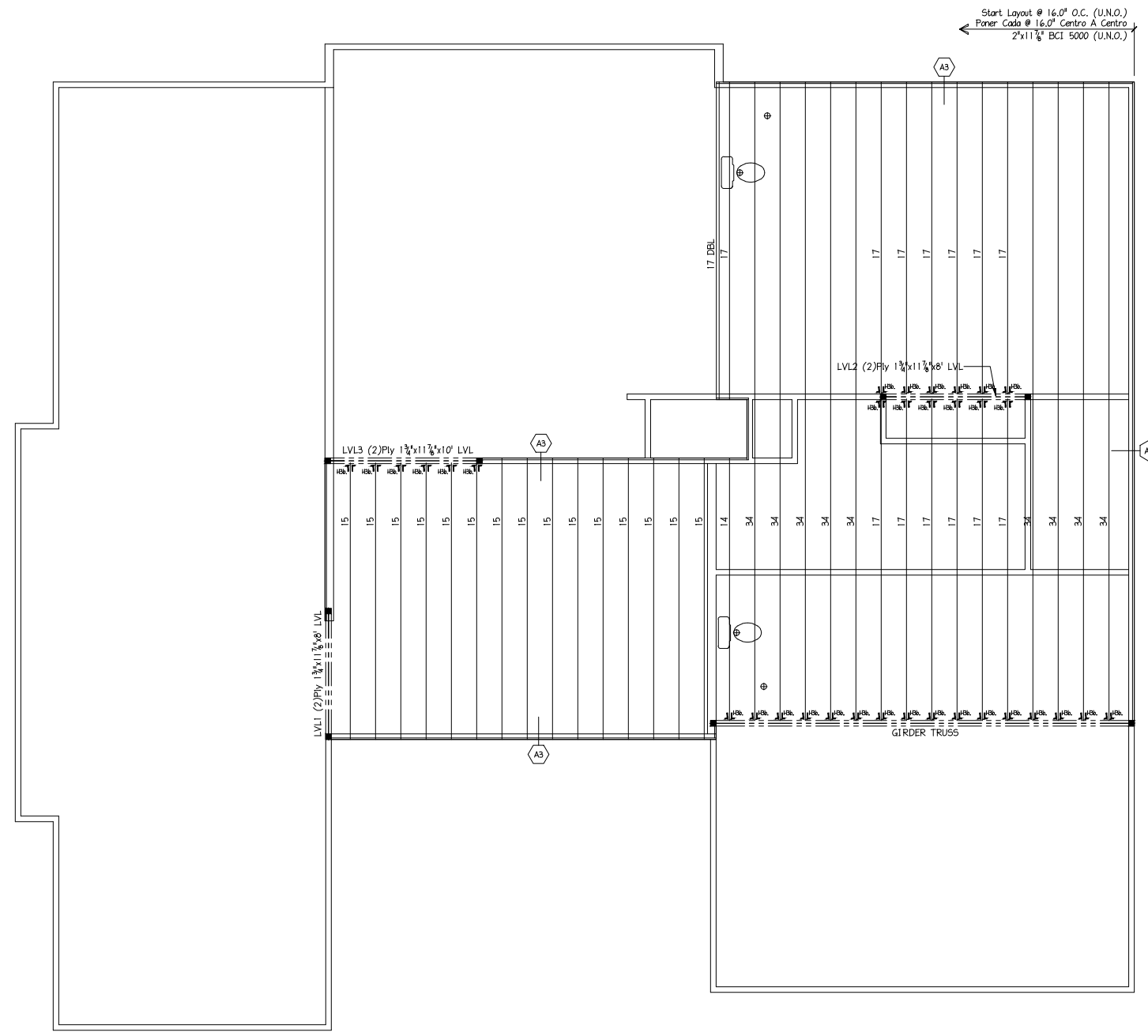
DESIGN DATA

LIVE 40 PSF
DEAD 10 PSF
TOTAL LOAD = 50 PSF

STRESS DURATION = 100%
DEFLECTION CRITERIA : (L/480)

Builders FirstSource

1800 MANUFACTURER'S INSTALLATION GUIDE BECOME FURNISH. COORDINATE APPROPRIATE GUIDE FOR EACH JOIST TYPE. SEE THE MANUFACTURER'S INSTALLATION GUIDE FOR MORE INFORMATION. THE MANUFACTURER'S INSTALLATION GUIDE IS THE AUTHORITY FOR ALL JOIST INFORMATION. THE MANUFACTURER'S INSTALLATION GUIDE IS THE AUTHORITY FOR ALL JOIST INFORMATION. THE MANUFACTURER'S INSTALLATION GUIDE IS THE AUTHORITY FOR ALL JOIST INFORMATION.



2ND FLOOR I-JOIST PLACEMENT PLAN
SCHUMACHER HOMES - RUIZ-DEVANE JOB

I-Joists

12BC14500 = 12TJ1110
12BC15000 = 12TJ1210
14BC14500 = 14TJ1110
14BC15000 = 14TJ1210
14BC16000 = 14TJ1230
16BC15000 = 16TJ1210
16BC160 = 16TJ1360

POINT LOAD FROM ABOVE (P.L.F.A.)

USE SOLID BLOCKING TO TRANSFER LOAD FROM ABOVE TO FOUNDATION

SCALE: 1/4" = 1'-0"

BUILDER: SCHUMACHER HOMES
MODEL: RUIZ-DEVANE JOB
2ND FLOOR I-JOIST PLACEMENT PLAN
DATE: MONDAY, 3 APRIL 2023 - 10:14 AM
FILE: I:\...ALES TEAMDARREN HAGEN\SCHUMACHER - RUIZ-DEVANE.DWG

DRAWN BY: T.J.F. DATE: 4/3/23
SHEET: 1 OF 1 SHEETS