

**Adams Soil Consulting**  
**1676 Mitchell Road**  
**Angier, NC 27501**  
**919-414-6761**

---

January 27, 2023  
Project #1504

Attention: Ron Tutor  
Glenwood Builders, LLC

RE: Jurisdictional Wetland investigation/delineation for 125 Wade Stephenson Road, Fuquay-Varina, NC in Harnett County, NC.

Mr. Tutor,

Adams Soil Consulting (ASC) conducted a reconnaissance wetland investigation/delineation on the above referenced parcel to determine the areas of potentially jurisdictional wetlands. The site evaluation was performed in compliance with the 1987 U.S. Army Corps of Engineers (USACE) Wetland Delineation Manual of the U.S. The wetlands found on the site were localized adjacent to the existing stream on the norther property boundary. All wetlands observed were within 100 feet of "Parkers Creek". The wetlands found on the property were observed adjacent to the stream feature in the proposed open space of the subdivision plan. No site modifications (cut/fill) could be made within the potential wetland areas without consultation/permitting by the USACE. Based on the site plan you provided to me, it is my professional opinion that your land disturbance activities will be outside of the wetland boundaries. No land disturbance activities should take place within 100 feet of Parker's Creek without a more detailed evaluation.

The field investigation included an evaluation of the 17 proposed lots to identify areas exhibiting wetland criteria. The criteria used are based on the identification of the following characteristics in accordance with the 1987 USACE manual:

1. The presence of Hydrophytic vegetation.
2. The presence of wetland hydrology
3. The presence of hydric soil indicators.

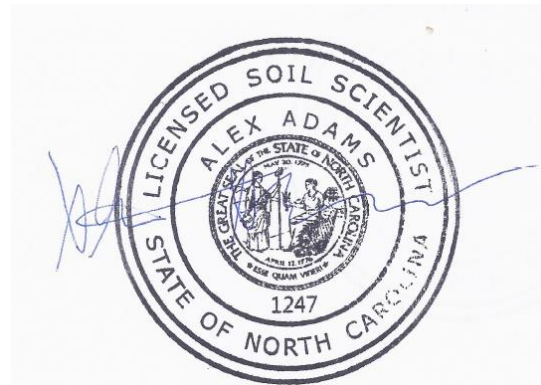
The scope of the wetland investigation/delineation was preliminary in nature. This investigation does not represent a Jurisdictional Determination made by the USACE.

If you have any questions regarding the findings on sketch map supplied to you or in this report, please feel free to contact me anytime. Thank you allowing me to perform this site evaluation for you.

Sincerely,

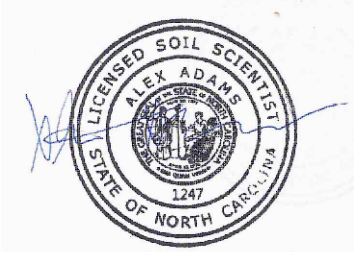
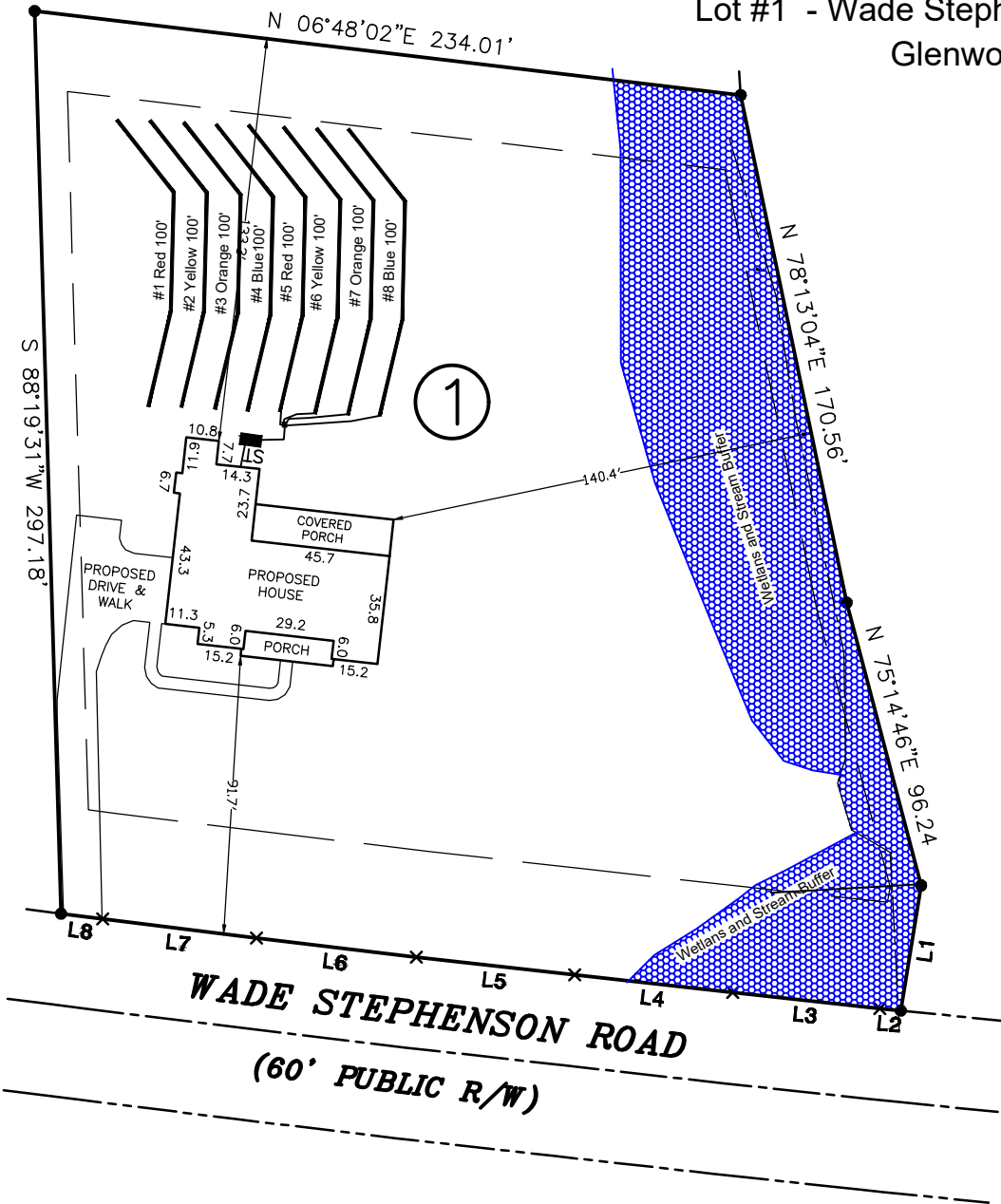


Alex Adams  
NC Licensed Soil Scientist #1247



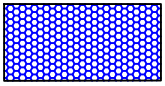
# Reconnaissance Jurisdictional Wetland Determination

Lot #1 - Wade Stephenson Road - Harnett County  
Glenwood Builders, LLC



GRAPHIC SCALE  
1" = 60'



 Approximate location of potential jurisdictional wetlands. Areas are subject to revision pending pending final delineation and jurisdictional determination by the US Army Corp of Engineers.

Adams  
Soil Consulting  
919-414-6761  
Job #1504