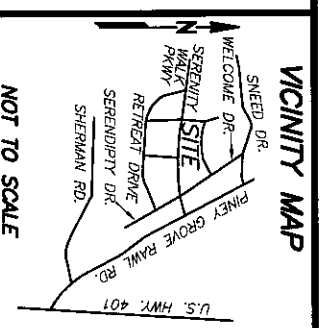


CURVE TABLE						
CURVE	DELTA	RADIUS	ARC	CHORD	TANGENT	CHORD BRG
C1	42°24'48"	50.00'	37.01'	36.17'	19.40'	S 71°04'07" W

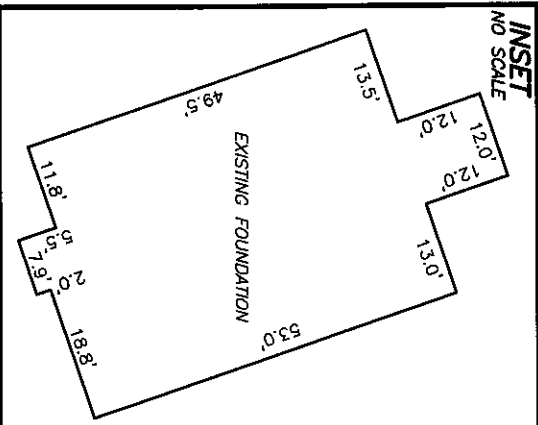
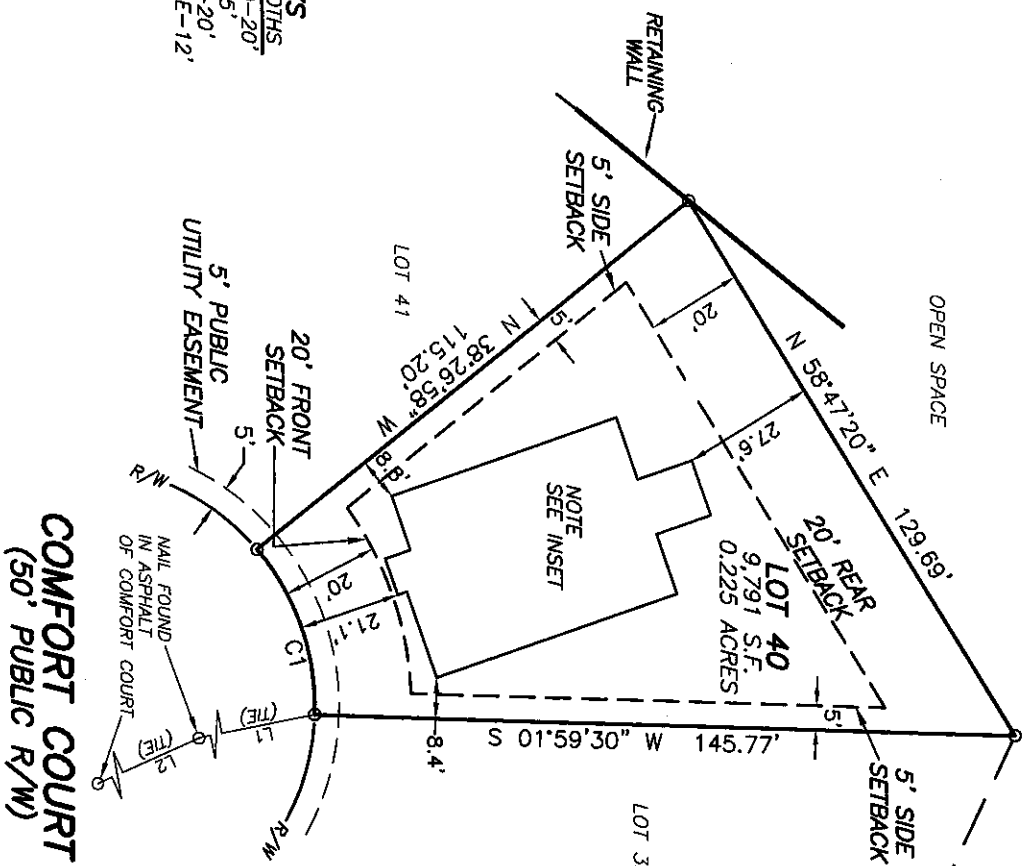
LINE TABLE		
LINE	BEARING	DISTANCE
L1	S 10°58'39" E	104.86'
L2	S 23°34'04" E	110.25'



NOT TO SCALE

- REFERENCES:
- D.B. 4165, PG. 506
PIN 0655-14-9053.000
PID 080655 0032 42
 - D.B. 4109, PG. 612

N.C. GRID NORTH NAD83 (2011)
P.B. 2022, PG. 434-448



FOUNDATION SURVEY FOR
DREES HOMES



FILE: STYL07407D

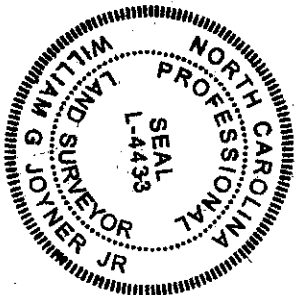
- NOTES:
- ALL EASEMENTS, RIGHTS OF WAY AND BOUNDARY INFORMATION TAKEN FROM P.B. 2022, PG 434-448 UNLESS OTHERWISE NOTED.
 - PROPERTY IS SUBJECT TO ALL EASEMENTS AND RESTRICTIONS OF RECORD. NO TITLE EXAMINATION HAS BEEN DONE BY ROBINSON & PLANTE, P.C.

NOTE:
RATIO OF PRECISION IS 1:10,000+, MISCLOSURE WAS DISTRIBUTED BY THE COMPASS METHOD. THE DISTANCES ON THIS MAP ARE ADJUSTED HORIZONTAL GROUND UNLESS NOTED OTHERWISE. ALL AREAS ARE CALCULATED BY COORDINATE COMPUTATION.

LOT 40 SERENITY SUBDIVISION
PHASE 1
70 COMFORT COURT
HARNETT COUNTY
FUQUAY-VARINA, N.C. 27526

REFERENCE: PLAT BOOK 2022 PAGE 434-448.

I CERTIFY THAT THIS MAP WAS DRAWN UNDER MY SUPERVISION FROM AN ACTUAL SURVEY MADE UNDER MY SUPERVISION. DESCRIPTION RECORDED IN REFERENCES AS SHOWN; THAT THE BOUNDARIES NOT SURVEYED ARE INDICATED AS DRAWN FROM INFORMATION IN THAT THE RATIO OF PRECISION IS 1:10,000; AND THAT THIS MAP MEET THE REQUIREMENTS OF THE STANDARDS OF PRACTICE FOR LAND SURVEYING IN NORTH CAROLINA (21 NCAC 56.16000).
 THIS 16th DAY OF FEBRUARY, 2023.



ROBINSON & PLANTE PC
 LAND SURVEYING
 C-2687
 970 TRINITY ROAD
 RALEIGH, N.C. 27607
 PHONE (919) 859-6030

DATE: 2-14-23 SCALE: 1"=40'