

TJP Depth, D	TJP Flange Width	Back Type	Size	Quantity
80" <math>D \le 30''</math>	18"	Fiber	1560, 156" x 7 1/2"	18
		Backer	1560, 156" x 7 1/2"	18
20" <math>D \le 24''</math>	18"	Fiber	1560, 156" x 3 1/2"	15 - each side
		Backer	1560, 156" x 3 1/2"	15 - each side

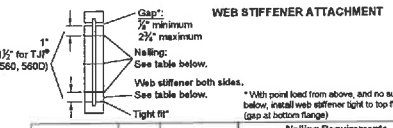
With top rafter hangers, backer block required only for decked loads exceeding 250 (PSF factors) for 4' or less. For fiber and backer block above see Weyerhaeuser Installation Guide for Floor and Roof Framing, T-4001.

**WARNING**  
Joists are unstable until braced laterally

- DO NOT walk on joists until braced. INJURY MAY RESULT.
- DO NOT walk on joists that are tying flat.
- DO NOT stack building materials on unbraced joists. Stack only over beams or walls.

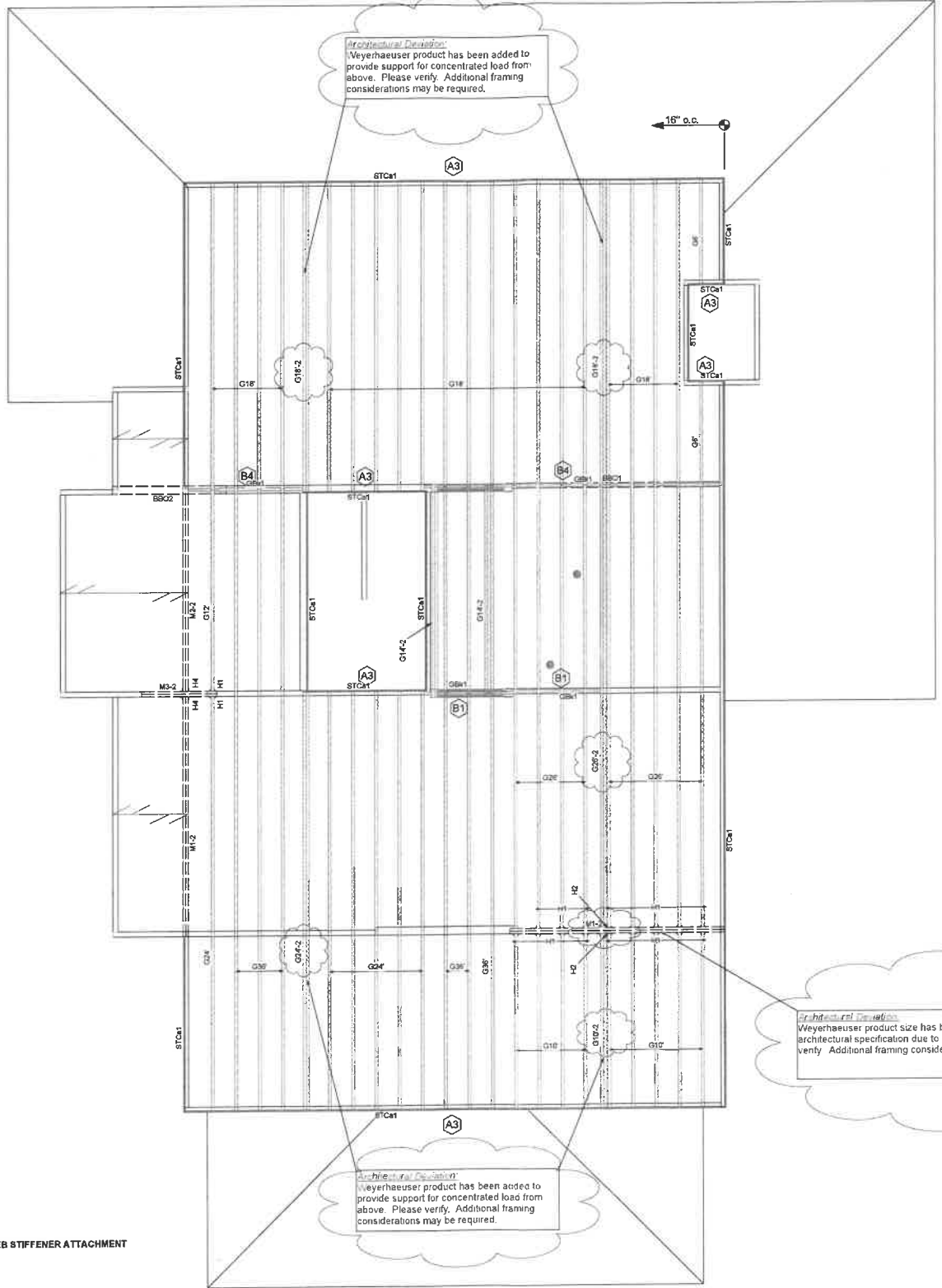
**WARNING NOTES:**  
Lack of proper bracing during construction can result in serious accidents. Observe the following guidelines:

- All blocking, hangers, toe boards and toe posts at the end supports of the TJP joists must be completely installed and properly nailed.
- Lateral strength, toe boards and toe posts, must be established at the end of the bay. This can be accomplished by a temporary or permanent stack (sheathing) braced to the first level of joists at the end of the bay.
- During bracing of the construction, bracing must be installed in the braced end and extended across the bay to each joist. Without step bracing, blocking sideways or raftering is highly probable under light construction loads - such as a worker or one layer of sheathing.
- Sheathing must be completely attached to each TJP joist before additional loads can be placed on the system.
- Ends of cantilevers require bracing on both the top and bottom flanges.
- The flanges must remain straight within 1/2" from true alignment.



TJP Joist Series	Depth (in.)	Minimum Web Stiffener Size	Nailing Requirements	
			Type	Number Nails
110	210	AB	3" x 2 1/2" x 1"	4
			6d	4
230 & 360	210	AB	3" x 2 1/2" x 1"	3
			(0.113" x 25')	3
560	210	A8	16d	4
			(0.135" x 35')	4
560D	210	A8	16d	5
			6	5
			6	11
			6	13

- PS1 or PS2 sheathing, to be grain vertical
- Construction grade or better
- Web stiffeners are always required for 22" and 24" TJP 560D Joists



Framing Connector Summary

Photo	Qty	Material	Product	Becker Block	Web Stiff
H1	19	Simpson	BUS2,0014	No	No
H2	2	Simpson	MU4,2814	No	No
H4	2	Simpson	HAS10	No	No

Products

Photo	Length	Product	Pieces	Net Qty
C05	36 0"	1 1/4" TJI 210 joist	1	1
G06-1	26 0 1/8"	1 1/4" TJI 210 joist	1	1
G20-2	26 0"	1 1/4" TJI 210 joist	2	2
G20-1	26 0"	1 1/4" TJI 210 joist	1	1
G24-2	24 0"	1 1/4" TJI 210 joist	2	2
G24-1	24 0"	1 1/4" TJI 210 joist	1	1
G18-2	18 0"	1 1/4" TJI 210 joist	2	2
G18-1	18 0"	1 1/4" TJI 210 joist	1	1
G14-2	14 0"	1 1/4" TJI 210 joist	2	2
G12	12 0"	1 1/4" TJI 210 joist	1	1
G10-2	10 0"	1 1/4" TJI 210 joist	2	2
G10-1	10 0"	1 1/4" TJI 210 joist	1	1
C6	6 0"	1 1/4" TJI 210 joist	1	1
M1-2	14 0"	1 3/4" x 11 7/8" 2.0E Microlam LVL	2	2
M2-2	12 0"	1 3/4" x 11 7/8" 2.0E Microlam LVL	2	2
M3-2	6 0"	1 3/4" x 11 7/8" 2.0E Microlam LVL	2	2
STC1	18 0"	1 1/2" x 1 1/4" TJI Rim Board	1	12

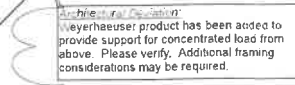
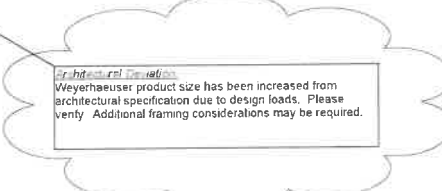
Accessories

Photo	Length	Product	Pieces	Net Qty
		2332'x48'x96' Weyerhaeuser Edge Cold Panel (G24 TAG SF	1	55

LEVEL NOTES

Current Date	10/26/2022
File Name	SR-309891.rvt
Level Name	2nd Floor
Building Code - Design Methodology	IBC 2018
Members with Design Overrides	
TJP-Rating (Maximum Average)	S8
Minimum Level TJP-Rating & Joist	TJP-Rating = S1, Joist = G18 (M2)
Maximum Level TJP-Rating & Joist	TJP-Rating = B9, Joist = G14 (M2)
FLOOR	
Floor Container	FC4
LoadCategory	Residential Single-Family
Floor Area Loading	40.0 IMP Live Load & 10.0 IMP Dead Load
Maximum Allowed Deflection	L/480 Live Load & L/240 Total Load
TJP-Rating Information	
Weighted Average	S8
Directly Applied Ceiling	Open 1/2"
Decking Attachment	Glue and Nail
Decking Material	2332'x48'x96' Weyerhaeuser Edge Cold Panel (G24 TAG SF
Perpendicular Partition	No
Sheathing at max 8' o.c.	None
Blocking at max 8' o.c.	No
Poured Flooring	No

An additional 10 PSF DL has been added to account for tile load on this floor. See architectural for tile locations.



Second Floor Framing Plan  
Scale: 1/4" = 1'-0"

SYMBOL LEGEND

○	Beaming Length Requirement
○	Line Load
○	Point Load
○	Area Load
○	ISO Member By Others
○	Closure By Others
○	Under Load Above
○	Tab Plumbing Drop
○	Walls Above
○	Detail Callout Label

- GENERAL NOTES:**
- Joists may be shifted up to 3' from on center spacing to avoid hanger interference, flush beams and/or plumbing drops. DO NOT CUT JOIST FLANGES.
  - All EWP beams have been designed assuming full width support of the members/piles, unless noted otherwise.
  - This drawing may contain deviations from the original project documents. It is the responsibility of the contractor to notify the project Design Professional of these deviations to verify conformance with the original design intent of the project.
  - This layout is intended for the use of TrusJoist engineered wood products only. The substitution of other wood products with this layout is NOT PERMITTED. Please identify the TJI, TimberStrand® LSL, Microlam® LVL and Parallam® PSL stamps on the product to ensure that this layout is valid for the products actually installed.
  - Only header openings and roof loads which affect Weyerhaeuser product sizes have been denoted on this layout. In addition to and CS' detail callouts shown, solid blocking and/or squish blocks are required to provide vertical load transfer from all concentrated load locations to foundation below. See Pocket Framers Guide for appropriate details.

**KRAKOWSKI RESIDENCE**

Weyerhaeuser  
ENGINEERED WOOD PRODUCTS

Specification Team  
SERVICES@WEYERHAEUSER.COM  
WWW.AXIS.WEYERHAEUSER.COM

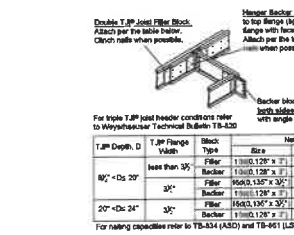
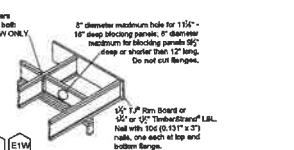
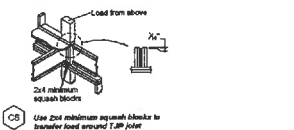
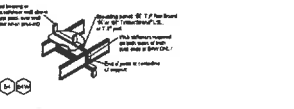
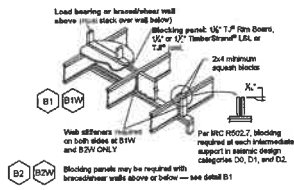
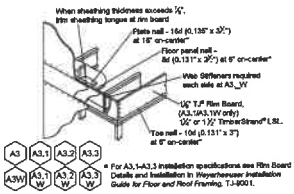
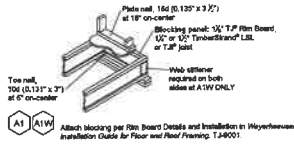
Architectural Drawings Prepared By:  
TYNDALL  
9/20/22

Structural Drawings Prepared By:  
ALLISON RAMSEY  
7/20/22

Terry O  
10/26/22

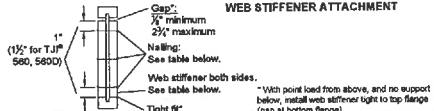
R22-246925  
SR-309891

Sheet  
**2 of 2**



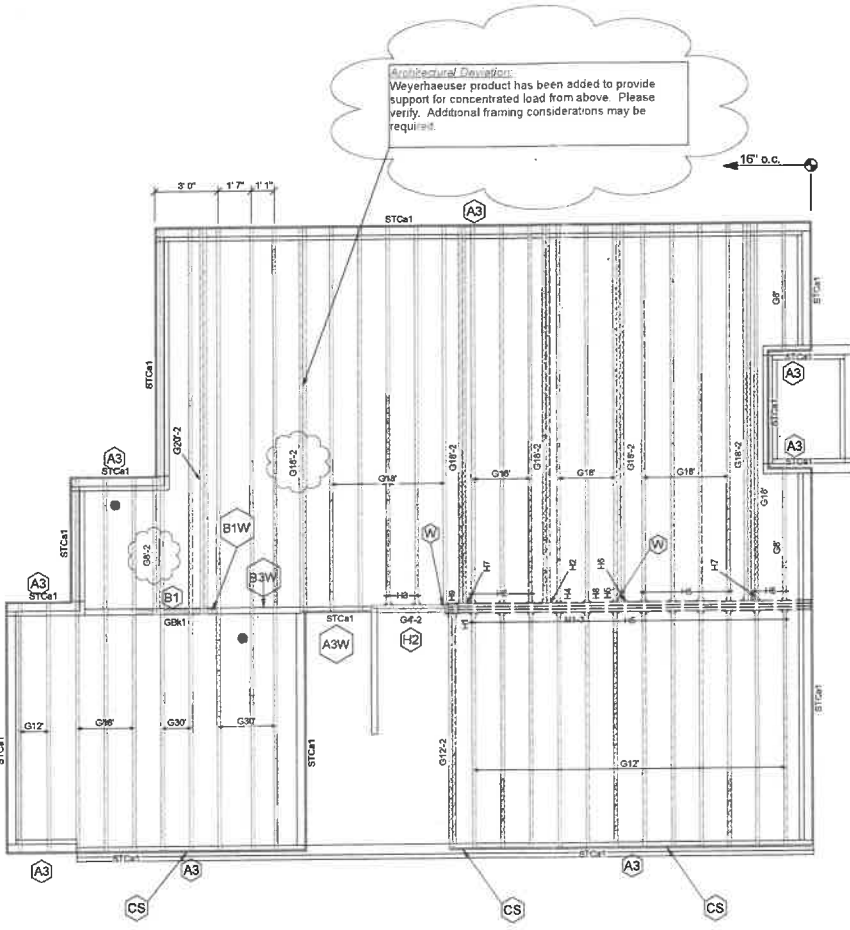
**WARNING**  
Joists are unstable until braced laterally.

- DO NOT walk on joists until braced. INJURY MAY RESULT.
  - DO NOT walk on joists that are tying in.
  - DO NOT stack building materials on unbraced joists. Stack only over beams or walls.
- WARNING NOTES:**  
Lack of proper bracing during construction can result in serious accidents. Observe the following guidelines:
- All blocking, hangers, toe boards and rim joists at the end supports of the T-JP joints must be completely installed and properly nailed.
  - Lateral strength, the braced end of an existing block, must be established at the end of the bay. This can also be accomplished by a temporary or permanent block sheathing fastened to the first 4 feet of joist at the end of the bay.
  - Early bracing at the braced end will be essential to maintain the wall in place until it is braced to each bay. Without bracing, blocking always or will be highly probable under light construction loads - such as a worker or one layer of sheathing.
  - Blocking must be completely attached to each T-JP joint before additional loads can be placed on the system.
  - End of cantilevers require early bracing on both the top and bottom flanges.
  - The lengths must remain straight 1/2" from face alignment.
- Weyerhaeuser, Micromell, Parallon, TimberStrand, T-J, T-L, and Trus Joist are registered trademarks of Weyerhaeuser NR. © 2014 Weyerhaeuser NR Company. All rights reserved.



T-JP Joist Series	Depth (in.)	Minimum Web Stiffener Size	Nailing Requirements	
			Type	Number Nails
110	All	3/4" x 2 1/2" x 1 1/2"	6d	3
			(0.113" x 2 1/2")	
210	All	3/4" x 2 1/2" x 1 1/2"	6d	3
			(0.113" x 2 1/2")	
230 & 360	All	2x4 <sup>12</sup>	16d	4
			(0.135" x 3 1/2")	
500	All	2x4 <sup>12</sup>	6d	6
			5d	
			5d	
			11	
500D	All	2x4 <sup>12</sup>	6d	6
			13	

(1) PS1 or PS2 sheathing, face grain vertical  
(2) Construction grade or better  
(3) Web stiffeners are always required for 22" and 24" T-JP 580D Joists



First Floor Framing Plan  
Scale: 1/4" = 1'-0"

**Framing Connector Summary**

ProdID	Qty	Manuf	Product	Becker (lbs)	Web Stiff
H1	1	Simpson	HUC4.28711	No	Yes
H2	1	Simpson	MKA.2514	No	No
H3	2	Simpson	KSS.05914	1	Yes
H4	1	Simpson	KSS.05914	No	Yes
H5	22	Simpson	KSS.05914	No	No
H6	1	User	MKA.2514	Not Required	Not Required
H7	2	Simpson	MKA.2514	No	Yes
H8	1	Simpson	WP2.1X-H-13.938	No	Yes
H9	1	User	KSS.05914	Not Required	Not Required

**Products**

ProdID	Length	Product	Pieces	Net Qty
G20	30' 0"	14" T&J 210 joist	1	5
G20-2	20' 0"	14" T&J 210 joist	2	2
G18-2	18' 0"	14" T&J 210 joist	2	10
G16	18' 0"	14" T&J 210 joist	1	19
G12-2	12' 0"	14" T&J 210 joist	2	2
G12	12' 0"	14" T&J 210 joist	1	14
G8-2	8' 0"	14" T&J 210 joist	2	2
G8	8' 0"	14" T&J 210 joist	1	1
G6	6' 0"	14" T&J 210 joist	1	1
G4-2	4' 0"	14" T&J 210 joist	2	2
G4	4' 0"	14" T&J 210 joist	1	1
G1K1	2' 9 7/8"	14" T&J 210 joist	1	1
M1-3	15' 0"	1 3/4" x 18" 2.0E Micromell LVL	3	3
STCa1	15' 0"	1 1/8" x 14" T&J Rim Board	1	10

**Accessories**

ProdID	Length	Product	Pieces	Net Qty
3' 2"	2x4	3/8" sheathing Filler Blocks	1	1
1' 0"	3/4" or 7/8"	Becker Blocks	1	2
11' 14"	3/4" x 2 5/8"	Web Stiffeners	1	40
2322x4875x6"		Weyerhaeuser Edge Gold Panel (D24) T&G SF	1	32

**Total Lengths**

Length	Product
94' 9 7/8"	14" T&J 210 joist
54' 0"	1 3/4" x 18" 2.0E Micromell LVL
180' 0"	1 1/8" x 14" T&J Rim Board
3' 2"	2x4 + 3/8" sheathing Filler Blocks
7' 0"	3/4" or 7/8" Becker Blocks
37' 8"	3/4" x 2 5/8" Web Stiffeners

**LEVEL NOTES**

Current Date	10/26/2022
File Name:	SR-309891.dwg
Level Name:	1st Floor
Building Code - Design Methodology:	IBC 2018
Members with Design Overrides:	56
T-JP Rating (Weighted Average):	56
Minimum Level T-J-P Rating & Joist	T-J-P Rating = 50, joist = G18 (0.356)
Maximum Level T-J-P Rating & Joist	T-J-P Rating = 72, joist = G8 (0.334)

**FLOOR**

Floor Container:	FC3
Use/Occupancy:	Residential, Single-Family
Floor Area Loading:	40.0 B/M <sup>2</sup> Live Load & 10.0 B/M <sup>2</sup> Dead Load
Maximum Allowed Deflection:	L/480 Live Load & L/240 Total Load
T-J-P Rating Information:	56
Weighted Average:	56
Deadly Applied Ceiling:	gypsum 1/2"
Decking Attachment:	Glue and Nail
Decking Material:	2352x4875x6" Weyerhaeuser Edge Gold Panel (D24) T&G SF
Perpendicular Partition:	No
Strapping at max 8' o.c.:	None
Blocking at max 8' o.c.:	No
Poured Flooring:	No

An additional 10 PSF DL has been added to account for tile load on this floor. See architectural for tile locations.

An additional 20 PSF DL has been added to account for load from kitchen counter tops.

**SYMBOL LEGEND**

	Bearing Length Requirement
	Line Load
	Point Load
	Area Load
	Member By Others
	Closure By Others
	Under Load Above
	Toilet/Shower Plumbing Drop
	Tub Plumbing Drop
	Walls Above
	Detail Callout Label

- GENERAL NOTES:**
- Joists may be shifted up to 3" from on center spacing to avoid hanger interference, flush beams and/or plumbing drops. **DO NOT CUT JOIST FLANGES.**
  - All EWP beams have been designed assuming full width support of the members/piles, unless noted otherwise.
  - This drawing may contain deviations from the original project documents. It is the responsibility of the contractor to notify the project Design Professional of these deviations to verify conformance with the original design intent of the project.
  - This layout is intended for the use of TrusJoist engineered wood products only. The substitution of other wood products with this layout is NOT PERMITTED. Please identify the T-J, TimberStrand® LSL, Micromell® LVL, and Parallon® PSL stamps on the product to ensure that this layout is valid for the products actually installed.
  - Only header openings and roof loads which affect Weyerhaeuser product sizes have been denoted on this layout. In addition to and CS' detail callouts shown, solid blocking and/or squash blocks are required to provide vertical load transfer from all concentrated load locations to foundation below. See Pocket Framers Guide for appropriate details.

**KRAKOWSKI RESIDENCE**

R22-246925

SR-309891

**Sheet 1 of 2**

Weyerhaeuser  
ENGINEERED WOOD PRODUCTS

Specification Team  
SERVICES@WEYERHAEUSER.COM  
WWW.SRIS.WEYERHAEUSER.COM

Structural Drawings Prepared By: TYNDALL  
9/20/22

Structural Drawings Prepared By: ALLISON RAMSEY  
7/20/22

Terry O  
10/26/22

Weyerhaeuser prepared these plans for the specification of Trus Joist products based on project information provided to us. This service is provided on an "as is" basis. We warrant that the information provided to us was accurate and that the design of the project is the responsibility of the building owner. The design of record and/or building/frames is responsible to assure these drawings are compatible with the overall project. Copyright 2009 Weyerhaeuser/RF Company. Any copying or reproduction without our written consent is prohibited.