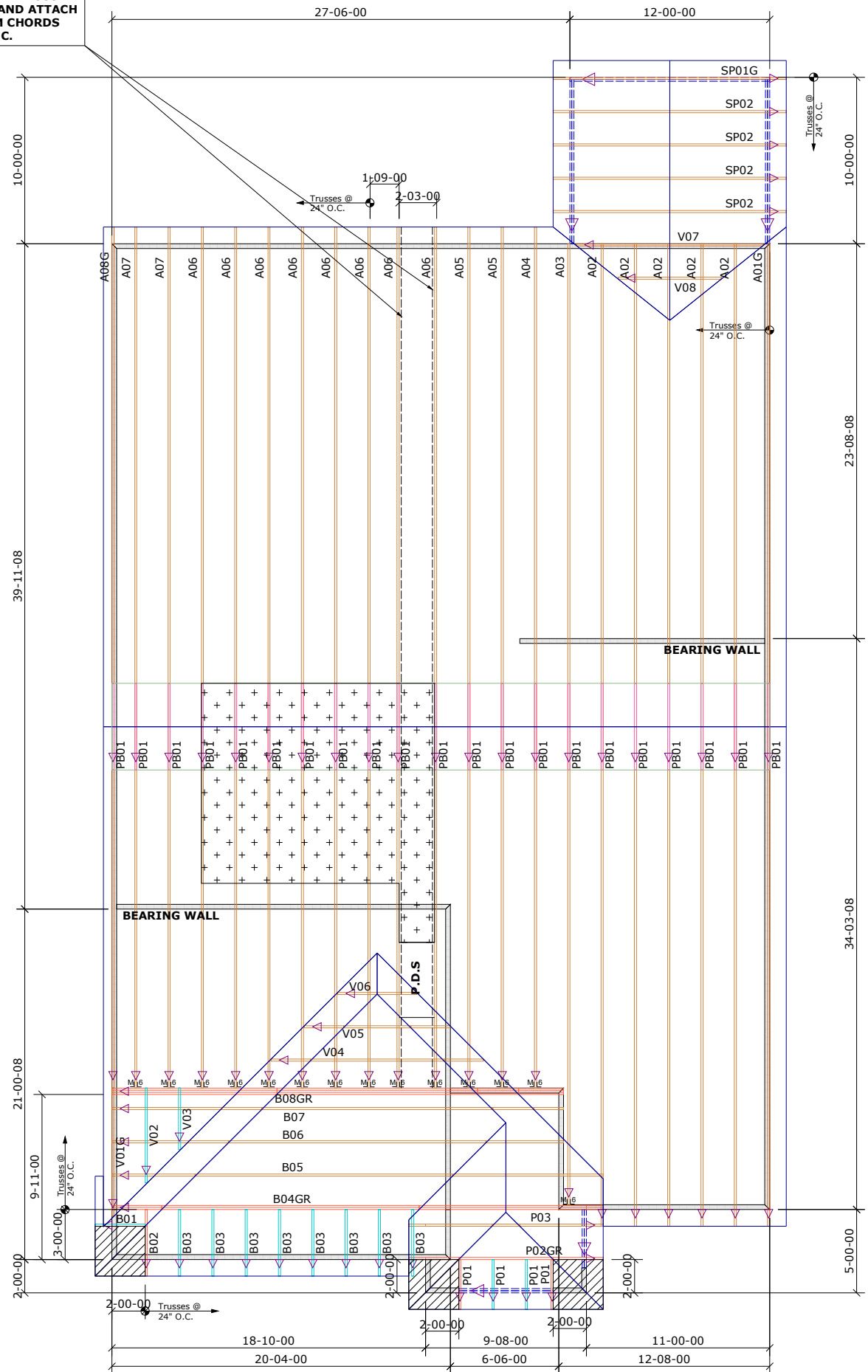


SPACE TRUSSES @ 2' O.C. UNLESS A WIDE P.D.S IS GOING TO BE INSTALLED. IF A WIDE P.D.S IS USED, FOLLOW SPECIAL TRUSS SPACING AS NOTED ON LAYOUT, AND ATTACH 2X4 LEDGER TO TOP & BOTTOM CHORDS W/12d NAILS @ 16" O.C.



Builders First Source
 23 Red Cedar Way
 Apex, NC 27523
 Phone: (919) 363-4956
 Fax: (919) 387-8565
 http://www.bldr.com

General Notes:
 - Per ANSI/TPI 1-2002 all " Truss to Wall" connections are the responsibility of the Building Designer, not the Truss Manufacturer.

- Dimensions are Feet-Inches- Sixteenths.
 - Trusses are to be 24" o.c. unless noted otherwise (U.N.O.)
 - Trusses are not designed to support brick U.N.O.
 - Do not cut or modify trusses without first contacting Builders FirstSource.
 - Immediately contact Builders FirstSource if trusses are damaged.

Connection Notes:
 - All hangers are to be Simpson or equivalent U.N.O.
 - Use Manufacturer's specifications for all hanger connections U.N.O.
 - Use 10d x 1 1/2" Nails in hanger connections to single ply roof girder trusses.

Floor Notes:
 - Shift truss as required to avoid plumbing traps.
 - Installation Contractor and/or Field Supervisor are to verify all dimensions, trap locations, and options prior to installation

Dimension Notes:
 - Drawing not to scale. Do not scale dimensions

Hanger List		All Tie Downs H2.5A Unless noted	
14	HTU26	M/Ls	Special Items List

Misc Material	

MATTAMY HOMES			
CASCADE	Elev:	FRENCH COUNTRY	
PROVIDENCE CREEK			
WAKE	NC	Lot:	63

SCREEN PORCH	Appwright #	

	Code:	IRC 2015
Designed By: MWA	Loading:	
	T.C.L.L.	20.0 lb/ft2
	T.C.D.L.	10.0 lb/ft2
Layout: CASCADE	B.C.L.L.	0.0 lb/ft2
L/O Date: 03/16/2023	B.C.D.L.	10.0 lb/ft2

Revision History		Wind:	
Rev1:	xx/xx/xx	M.P.H.	115
Rev2:	xx/xx/xx	Exposure Category	
Rev3:	xx/xx/xx	B	
Pick Ticket:	---	Job No.:	---
Sales No.:	---	Acct No.:	---

Hatch Legend	
	Attic Room
	Volume Ceiling
	Stick Framing

