

**General Notes:**  
 - Per ANSI/TPI 1-2002 all " Truss to Wall" connections are the responsibility of the Building Designer, not the Truss Manufacturer.  
 - Dimensions are Feet-Inches- Sixteenths.

- Trusses are to be 24" o.c. unless noted otherwise (U.N.O.)  
 - Trusses are not designed to support brick U.N.O.

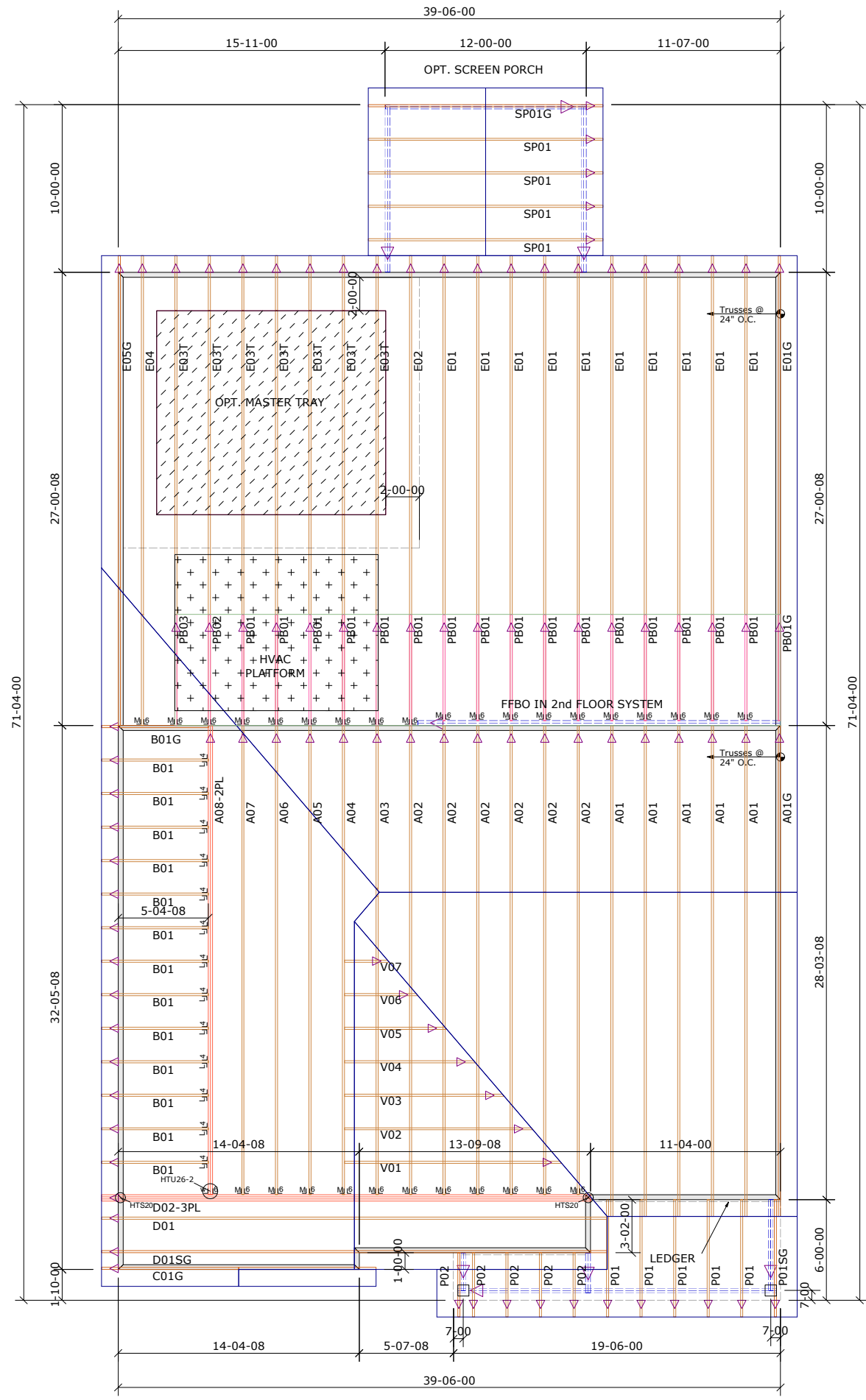
- Do not cut or modify trusses without first contacting Builders FirstSource.  
 - Immediately contact Builders FirstSource if trusses are damaged.

**Connection Notes:**  
 - All hangers are to be Simpson or equivalent U.N.O.  
 - Use Manufacturer's specifications for all hanger connections U.N.O.  
 - Use 10d x 1 1/2" Nails in hanger connections to single ply roof girder trusses.

**Floor Notes:**  
 - Shift truss as required to avoid plumbing traps.  
 - Installation Contractor and/or Field Supervisor are to verify all dimensions, trap locations, and options prior to installation

**Dimension Notes:**  
 - Drawing not to scale. Do not scale dimensions

NOTE: LEFT END OF TRUSS AS SHOWN ON TRUSS DETAIL DRAWINGS ARE INDICATED BY TRIANGLE ICONS. ▲



Hanger List		All Tie Downs H2.5A Unless noted	
13	LUS24	1/4	1/4
30	HTU26	1/2	1/2
1	HTU26-2	1/2	1/2
2	HTS20	1/2	1/2

Special Items List	

Misc Material	

MATTAMY HOMES			
TETON	Elev:	FARMHOUSE	
PROVIDENCE CREEK			
WAKE CO.	NC	Lot:	65
Appwright #			
X			
Code: IRC 2015			
Loading:			
T.C.L.L.		20.0 lb/ft2	
B.C.L.L.		0.0 lb/ft2	
B.C.D.L.		10.0 lb/ft2	

Designed By:	MPH	T.C.D.L	10.0 lb/ft2
Layout:	FHTSPL	B.C.L.L.	0.0 lb/ft2
L/O Date:	2/8/22	B.C.D.L.	10.0 lb/ft2
Revision History		Wind:	
Rev1:	xx/xx/xx	M.P.H.	115 mph
Rev2:	xx/xx/xx	Exposure Category	
Rev3:	xx/xx/xx	B	
Pick Ticket:	X	Job No:	X
Sales No:	X	Acct No:	---

Hatch Legend	
	Attic Room
	Volume Ceiling
	Stick Framing

