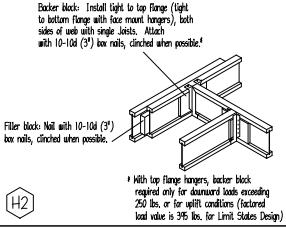
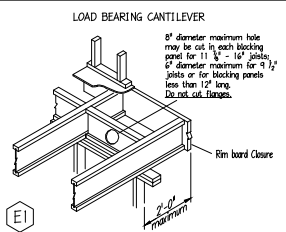
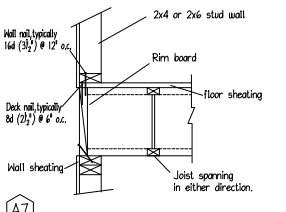
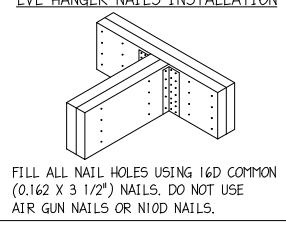


Must have 1 3/4" minimum joint bearing at ends



CONNECTION OF MULTIPLE PIECES OF TOP-LOADED BEAMS
LVL 4 PSL (1 3/4" Width Pieces)
Minimum of 2 rows 16d (3 1/2") nails at 12" oc.
Minimum of 3 rows 16d (3 1/2") nails at 12" oc. for 14", 12", 10" beams.



FILL ALL NAIL HOLES USING 16D COMMON (0.162 X 3 1/2") NAILS. DO NOT USE AIR GUN NAILS OR N10D NAILS.

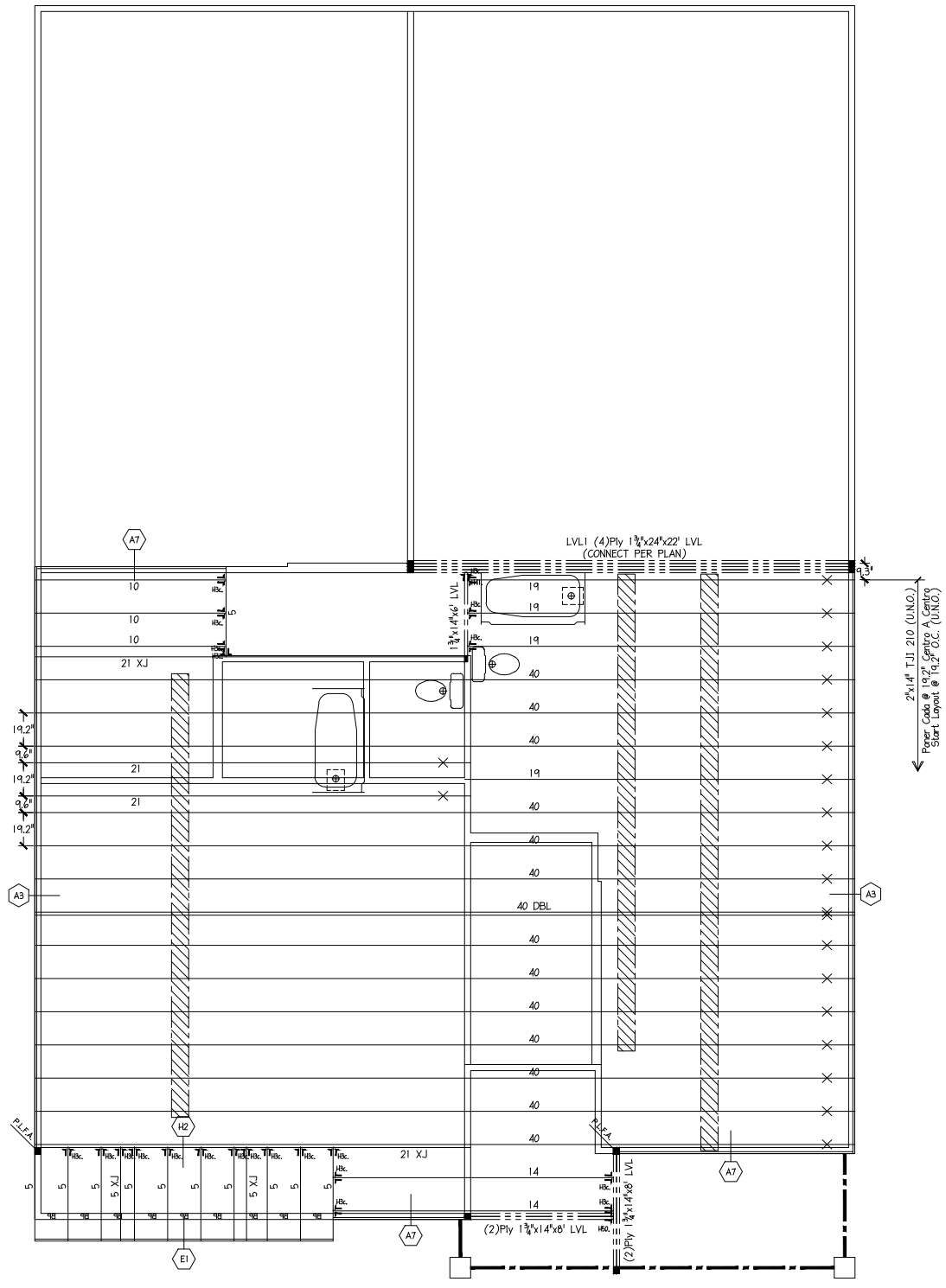
ENGINEERED WOOD MATERIAL LIST

MATTAMY HOMES
TETON - LOT 63PCK
2ND FLOOR I-JOIST PLACEMENT PLAN

Table with columns: MARK, QTY, CUT LENGTH, DESCRIPTION, (Notes)

Table with columns: BEAMS AND HEADERS, ITEM, QTY, UNIT, DESCRIPTION

Table with columns: ACCESSORIES & OTHER MATERIALS (Simpson Hangers), ITEM, QTY, UNIT, DESCRIPTION



2ND FLOOR I-JOIST PLACEMENT PLAN
MATTAMY HOMES - TETON - LOT 63PCK

POINT LOAD FROM ABOVE (P.L.F.A.)
USE SOLID BLOCKING TO TRANSFER LOAD FROM ABOVE TO FOUNDATION
DO NOT CUT ORANGE END
NO CORTE EL. COLOR NARANJA
"x" INDICATES ORANGE END
"x" INDICAR EL COLOR NARANJA



SEE MATERIAL LIST FOR JOIST, SERIES & LENGTH
INDICATED I-JOIST
INDICATED TIMBERSTRAND LVL
INDICATED PARALLEL PSL
INDICATED QUARTER LVL

THIS SHOP DRAWING IS BASED ON THE FOLLOWING
PROJECT LOCATION:
PROJECT NUMBER:
ARCHITECT DNGS BY:
ARCHITECT REVISION:
STRUCTURAL REVIEW BY:
DATE:

Table with columns: REV, BY, DATE / DESC.

DESIGN DATA
LIVE 40 PSF
DEAD 10 PSF
TOTAL LOAD = 50 PSF
STRESS DURATION = 100%
DEFLECTION CRITERIA = (L/480)

Builders FirstSource logo and disclaimer text.

BUILDER: MATTAMY HOMES
MODEL: TETON - LOT 63PCK
2ND FLOOR I-JOIST PLACEMENT PLAN
DATE: MONDAY, 24 OCTOBER 2022 - 12:11 AM
FILE: I:\...MATTAMY_HOMESTEITON - LOT 63 PROVIDENCE CREEK.DWG