

KB Homes
2723 Elev.D
181 Birchwood Grove

Revisions: BY:



KB Homes
2723 Elev.D
181 Birchwood Grove
84 Lumber EWP

BC FRAMER II

Scale: NTS

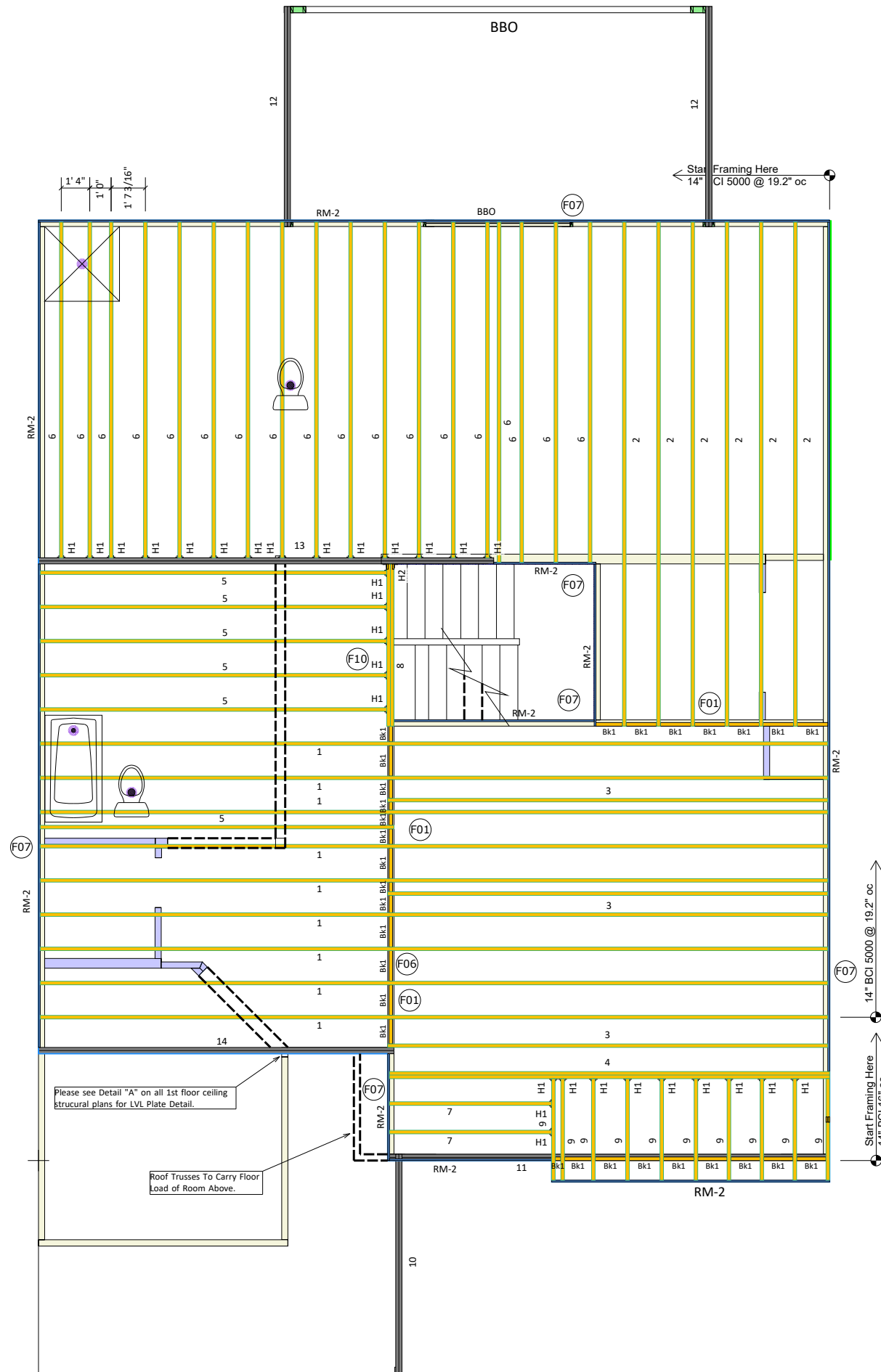
Date: 05/23/2022

By: GAT

File: 2723 Elev.D

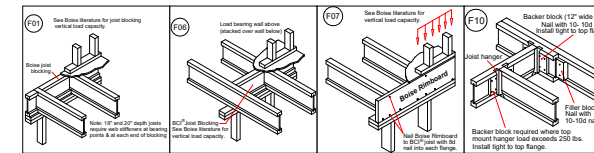
Struc Date: 05/21/21

Sheet: 1/1



| Products | | | | | | |
|----------|--------|--|-------|---------|----------|--|
| PlotID | Length | Product | Plies | Net Qty | Fab Type | |
| 1 | 37' 0" | 14" BCI® 5000s-1.8 | 1 | 9 | FF | |
| 2 | 24' 0" | 14" BCI® 5000s-1.8 | 1 | 6 | FF | |
| 3 | 21' 0" | 14" BCI® 5000s-1.8 | 1 | 3 | FF | |
| 4 | 21' 0" | 14" BCI® 5000s-1.8 | 2 | 2 | FF | |
| 5 | 17' 0" | 14" BCI® 5000s-1.8 | 1 | 6 | FF | |
| 6 | 16' 0" | 14" BCI® 5000s-1.8 | 1 | 18 | FF | |
| 7 | 8' 0" | 14" BCI® 5000s-1.8 | 1 | 2 | FF | |
| 8 | 8' 0" | 14" BCI® 5000s-1.8 | 2 | 2 | FF | |
| 9 | 5' 0" | 14" BCI® 5000s-1.8 | 1 | 10 | FF | |
| 10 | 12' 0" | 1-3/4" x 9-1/4" VERSA-LAM® LVL 2.1E 3100 SP | 2 | 2 | FF | |
| 11 | 22' 0" | 1-3/4" x 11-7/8" VERSA-LAM® LVL 2.1E 3100 SP | 2 | 2 | FF | |
| 12 | 12' 0" | 1-3/4" x 11-7/8" VERSA-LAM® LVL 2.1E 3100 SP | 2 | 4 | FF | |
| 13 | 22' 0" | 1-3/4" x 14" VERSA-LAM® LVL 2.1E 3100 SP | 2 | 2 | FF | |
| 14 | 18' 0" | 1-3/4" x 14" VERSA-LAM® LVL 2.1E 3100 SP | 2 | 2 | FF | |
| RM-2 | 12' 0" | 1" x 14" BC RIM BOARD OSB | 1 | 14 | FF | |
| Bk1 | 2' 0" | 14" BCI® 5000s-1.8 | 1 | 18 | FF | |

| Connector Summary | | | |
|-------------------|-----|---------|-------------|
| PlotID | Qty | Manuf | Product |
| H1 | 30 | Simpson | IUS2.06/14 |
| H2 | 1 | Simpson | MIU 4.12/14 |



All I-Joist and Versa-Lam Beams
Must be Installed per The
Boise Cascade Installation Guide!

Squash Blocks Required
Under The Ends Of All LVL
And Point Loads For Load
Transfer - See Details

Second Floor Layout