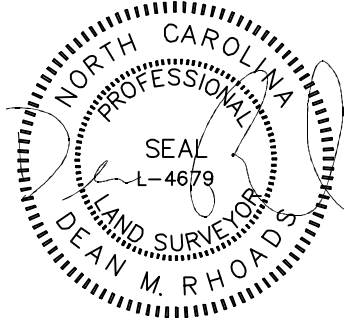


**VICINITY MAP**  
Not To Scale



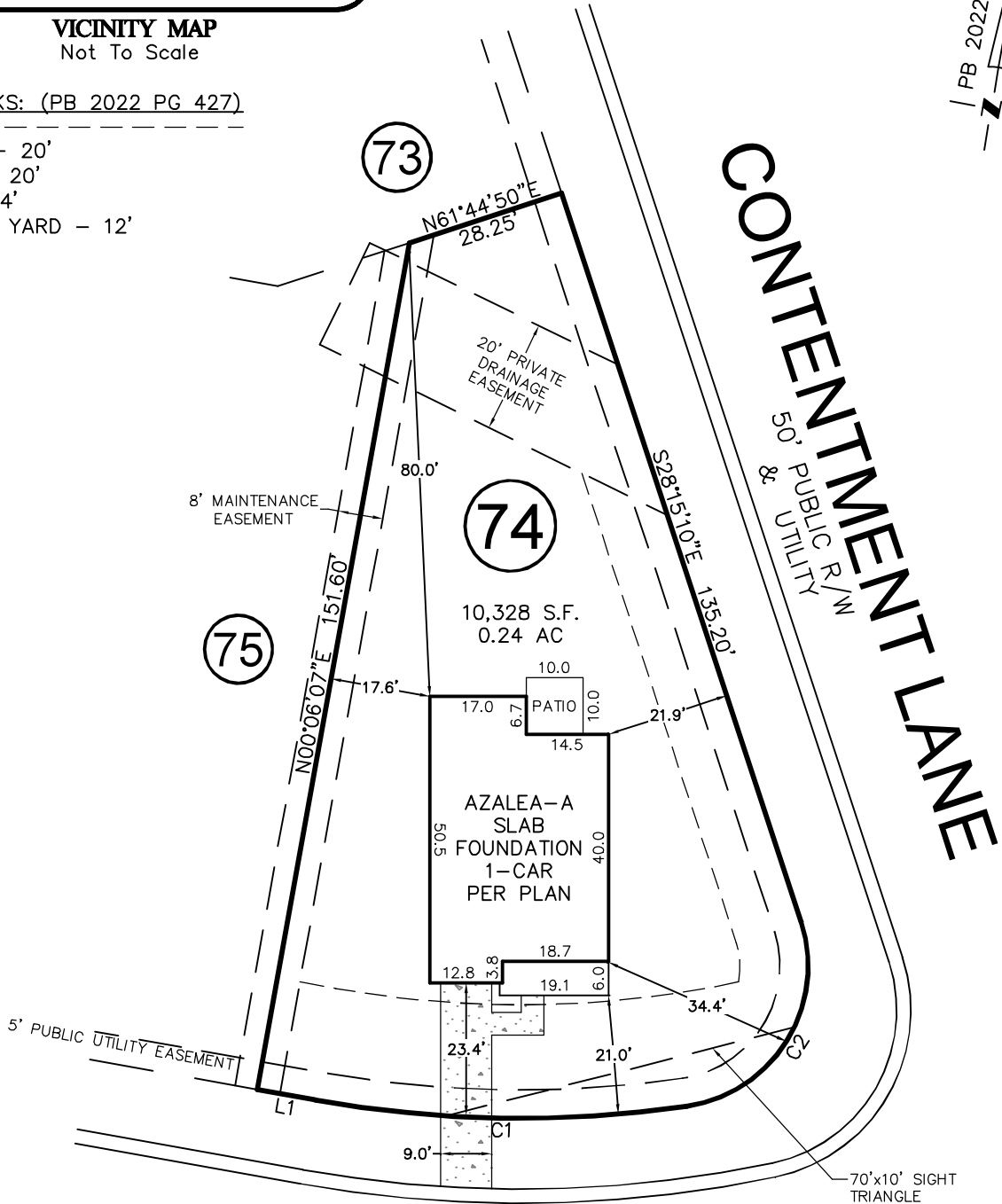
IMPERVIOUS SURFACE AREA	
DESCRIPTION	AREA
HOUSE w/ PORCH	1,536 S.F.
PORCH/HVAC/MISC.	109 S.F.
DRIVEWAY & WALKS	262 S.F.
TOTAL (PROPOSED)=	1,907 S.F.
*TOTAL (ALLOWED)=	2,300 S.F.

\* PB 2022 PG 419



SETBACKS: (PB 2022 PG 427)

- FRONT - 20'
- REAR - 20'
- SIDE - 4'
- CORNER YARD - 12'



# RETREAT DRIVE

50' PUBLIC R/W  
& UTILITY

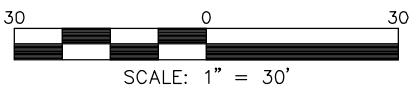
LINE	BEARING	DISTANCE
L1	N89°53'53"W	10.37'

CURVE	RADIUS	ARC LENGTH	CH LENGTH	CH BEARING
C1	205.00'	65.70'	65.42'	N80°55'15"E
C2	25.00'	43.63'	38.30'	N21°44'36"E

THIS PROPERTY MAY BE SUBJECT TO ANY AND ALL APPLICABLE DEED RESTRICTIONS, EASEMENTS, RIGHT-OF-WAY, UTILITIES AND RESTRICTIVE COVENANTS WHICH MAY BE OF RECORD OR IMPLIED

THIS DRAWING DOES NOT REFLECT AS-BUILT INFORMATION

**PRELIMINARY PLAT**  
NOT FOR RECORDATION, CONVEYANCES, OR SALES.



## RESIDENTIAL LAND SERVICES, PLLC.

1917 Evans Road  
Cary, North Carolina 27513  
Phone (919) 378-9316  
Firm License # P-0873

### HOUSE LOCATION PLOT PLAN

FOR  
RETREAT DRIVE

LOT 74, SERENITY SUBDIVISION, PHASE 1 (LOTS LESS THAN 9,000 SF)  
Hector's Creek Township, Harnett County, North Carolina

PROPERTY OF: GARMAN HOMES

MAP BOOK 2022 PAGE 419-433 DEED REFERENCE \_\_\_\_\_

DRAWN: ADP    SURVEYED: N/A    CHECKED: DMR    DATE: OCTOBER 19, 2022