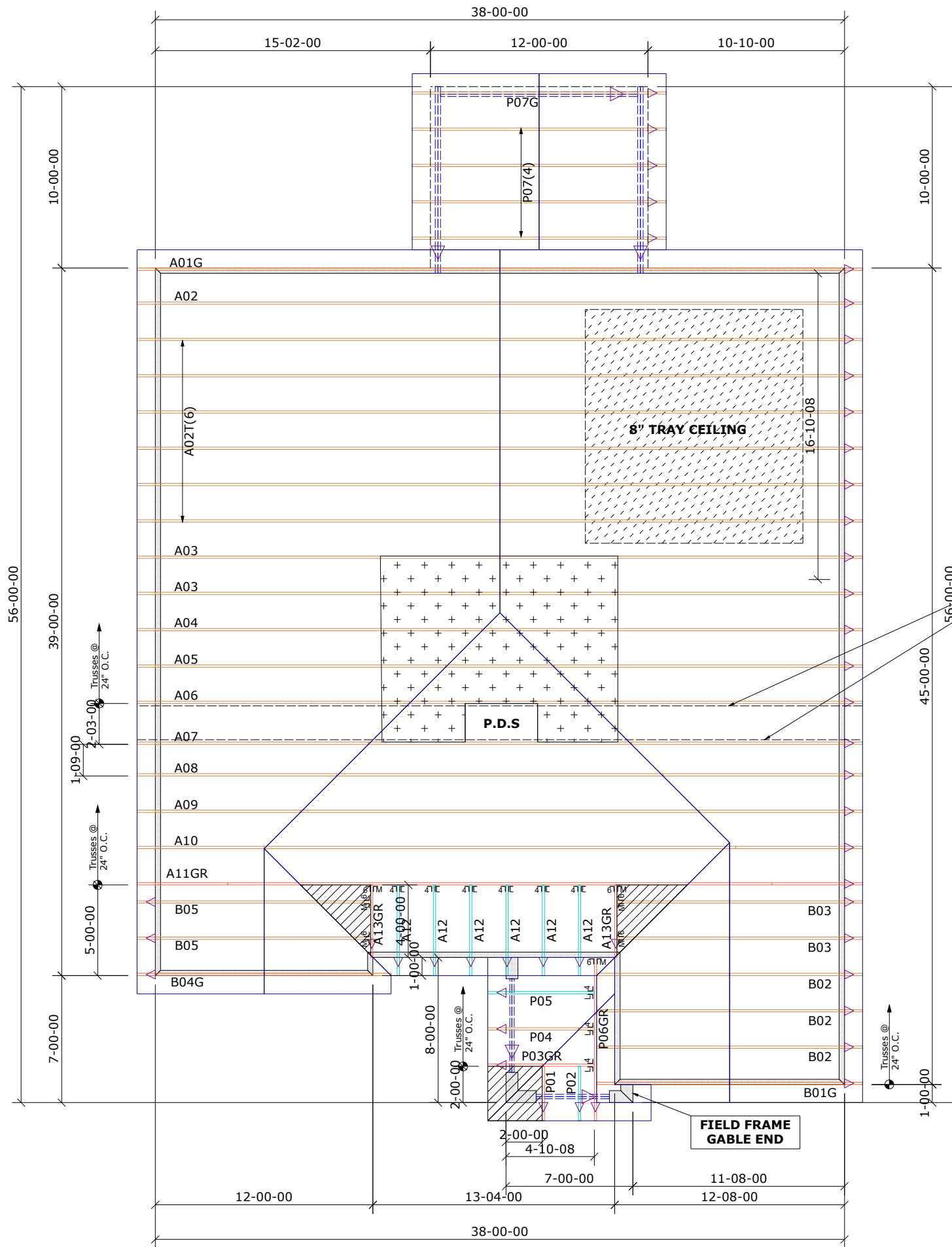


General Notes:
 - Per ANSI/TPI 1-2002 all "Truss to Wall" connections are the responsibility of the Building Designer, not the Truss Manufacturer.
 - Dimensions are Feet-Inches-Sixteenths.
 - Trusses are to be 24" o.c. unless noted otherwise (U.N.O.)
 - Trusses are not designed to support brick U.N.O.
 - Do not cut or modify trusses without first contacting Builders FirstSource.
 - Immediately contact Builders FirstSource if trusses are damaged.

Connection Notes:
 - All hangers are to be Simpson or equivalent U.N.O.
 - Use Manufacturer's specifications for all hanger connections U.N.O.
 - Use 10d x 1 1/2" Nails in hanger connections to single ply roof girder trusses.

Floor Notes:
 - Shift truss as required to avoid plumbing traps.
 - Installation Contractor and/or Field Supervisor are to verify all dimensions, trap locations, and options prior to installation.

Dimension Notes:
 - Drawing not to scale. Do not scale dimensions



SPACE TRUSSES 2' O.C. UNLESS A WIDE P.D.S. IS GOING TO BE INSTALLED. IF WIDE P.D.S. IS USED, FOLLOW SPECIAL TRUSS SPACING AS NOTED ON LAYOUT, & ATTACH 2X4 LEDGERS TO TOP & BOTTOM CHORDS W/ 12d NAILS @ 16" O.C

Hanger List			All Tie Downs H2.5A Unless noted	
9	LUS24	UL4	Special Items List	
7	HTU26	M16		
Misc Material				
MATTAMY HOMES				
SHENANDOAH	Elev:	FRENCH COUNTRY		
PROVIDENCE CREEK				
WAKE	NC	Lot:	53	
Appwright #				
COVERED VERANDA, MASTER TRAY, GARAGE LEFT				
33404454				
Code: IRC 2015				
Loading:				
T.C.D.L.			20.0 lb/ft2	
T.C.D.L.			10.0 lb/ft2	
B.C.D.L.			0.0 lb/ft2	
B.C.D.L.			10.0 lb/ft2	
Designed By: ABS				
Layout: FC_SPMBRT_GL				
L/O Date: 11/3/22				
Revision History				
Rev1:	xx/xx/xx	M.P.H.	115	
Rev2:	xx/xx/xx	Exposure Category		
Rev3:	xx/xx/xx	B		
Pick Ticket: ---				
Sales No: ---				
Job No: ---				
Acct No: ---				

Hatch Legend	
	Attic Room
	Volume Ceiling
	Stick Framing

