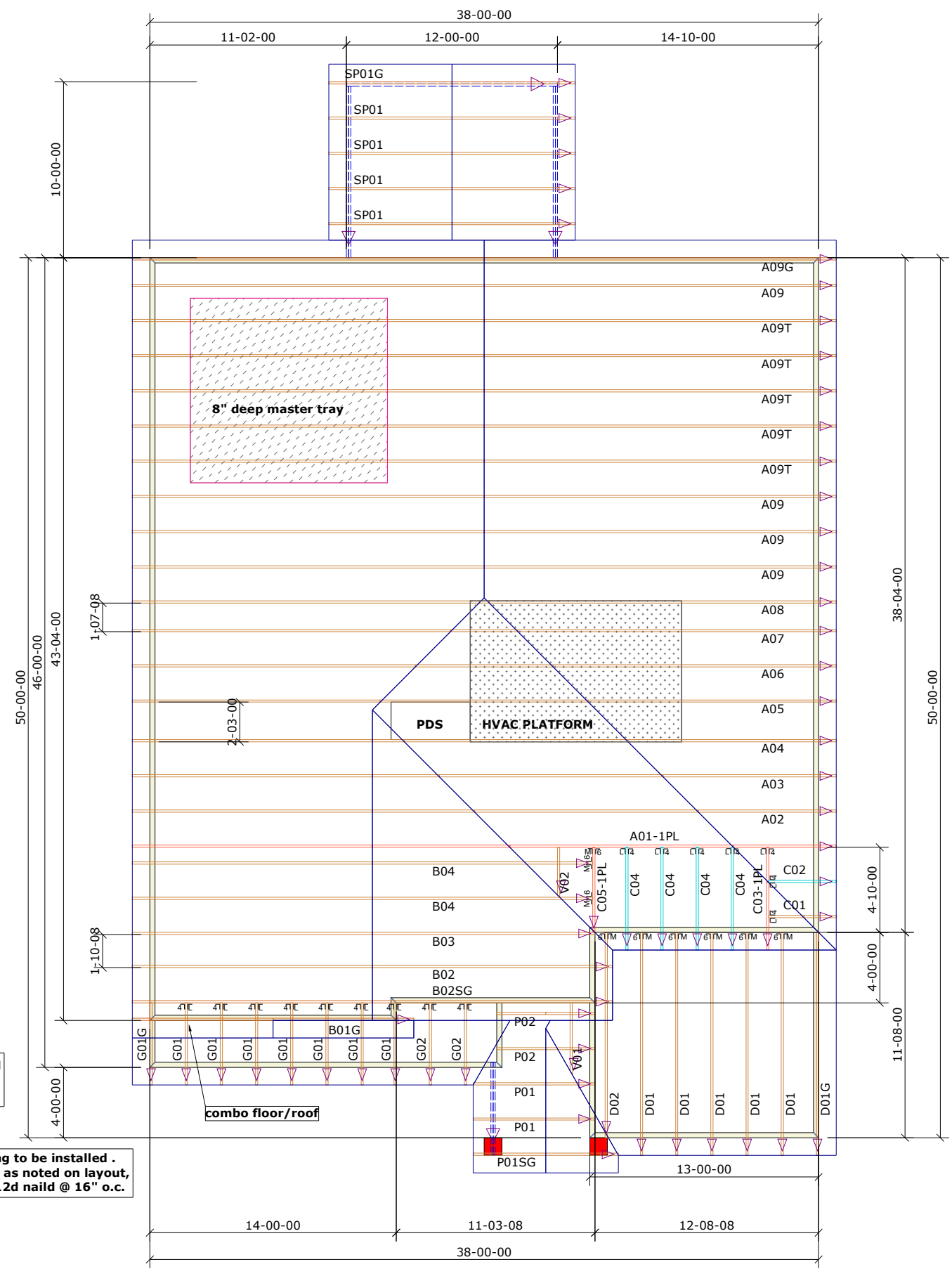


**General Notes:**  
 - Per ANSI/TPI 1-2002 all " Truss to Wall" connections are the responsibility of the Building Designer, not the Truss Manufacturer.  
 - Dimensions are Feet-Inches- Sixteenths.  
 - Trusses are to be 24" o.c. unless noted otherwise (U.N.O.)  
 - Trusses are not designed to support brick U.N.O.

- Do not cut or modify trusses without first contacting Builders FirstSource.  
 - Immediately contact Builders FirstSource if trusses are damaged.  
**Connection Notes:**  
 - All hangers are to be Simpson or equivalent U.N.O.  
 - Use Manufacturer's specifications for all hanger connections U.N.O.  
 - Use 10d x 1 1/2" Nails in hanger connections to single ply roof girder trusses.

**Floor Notes:**  
 - Shift truss as required to avoid plumbing traps.  
 - Installation Contractor and/or Field Supervisor are to verify all dimensions, trap locations, and options prior to installation

**Dimension Notes:**  
 - Drawing not to scale. Do not scale dimensions



9'-1-2" 1ST FLOOR  
 14" FLOOR  
 8'-1-2" 2ND FLOOR

NOTE: LEFT END OF TRUSS AS SHOWN ON TRUSS DETAIL DRAWINGS ARE INDICATED BY TRIANGLE ICONS.

Space trusses 2' o.c. unless a wide P.D.S is going to be installed . If wide P.D.S. is used, follow special truss spacing as noted on layout, & attach 2x4 ledgers to Top & Bottom chords w/12d naild @ 16" o.c.

Hanger List		All Tie Downs H2.5A Unless noted	
9	HTU26	MJ L8	
16	LUS24	UL4	

**Special Items List**

**Misc Material**

MATTAMY HOMES			
Spirit 40's Sequoia	Elev:	French Country	
PROVIDENCE CREEK			
WAKE	NC	Lot:	65
<b>Appwright #</b>			
MASTER TRAY/SCREEN PORCH/LH			
<b>Code:</b>		IRC 2015	
<b>Loading:</b>			
T.C.L.L.		20	
T.C.D.L		10	
B.C.L.L.		0	
B.C.D.L.		10	
<b>Revision History</b>			
Rev1:	xx/xx/xx	M.P.H.	115 MPH
Rev2:	xx/xx/xx	Exposure Category	
Rev3:	xx/xx/xx	EXPOSURE B	
<b>Pick Ticket:</b>		<b>Job No:</b> PCK65	
<b>Sales No:</b>		<b>Acct No:</b>	

Hatch Legend	
	Attic Room
	Volume Ceiling
	Stick Framing

