

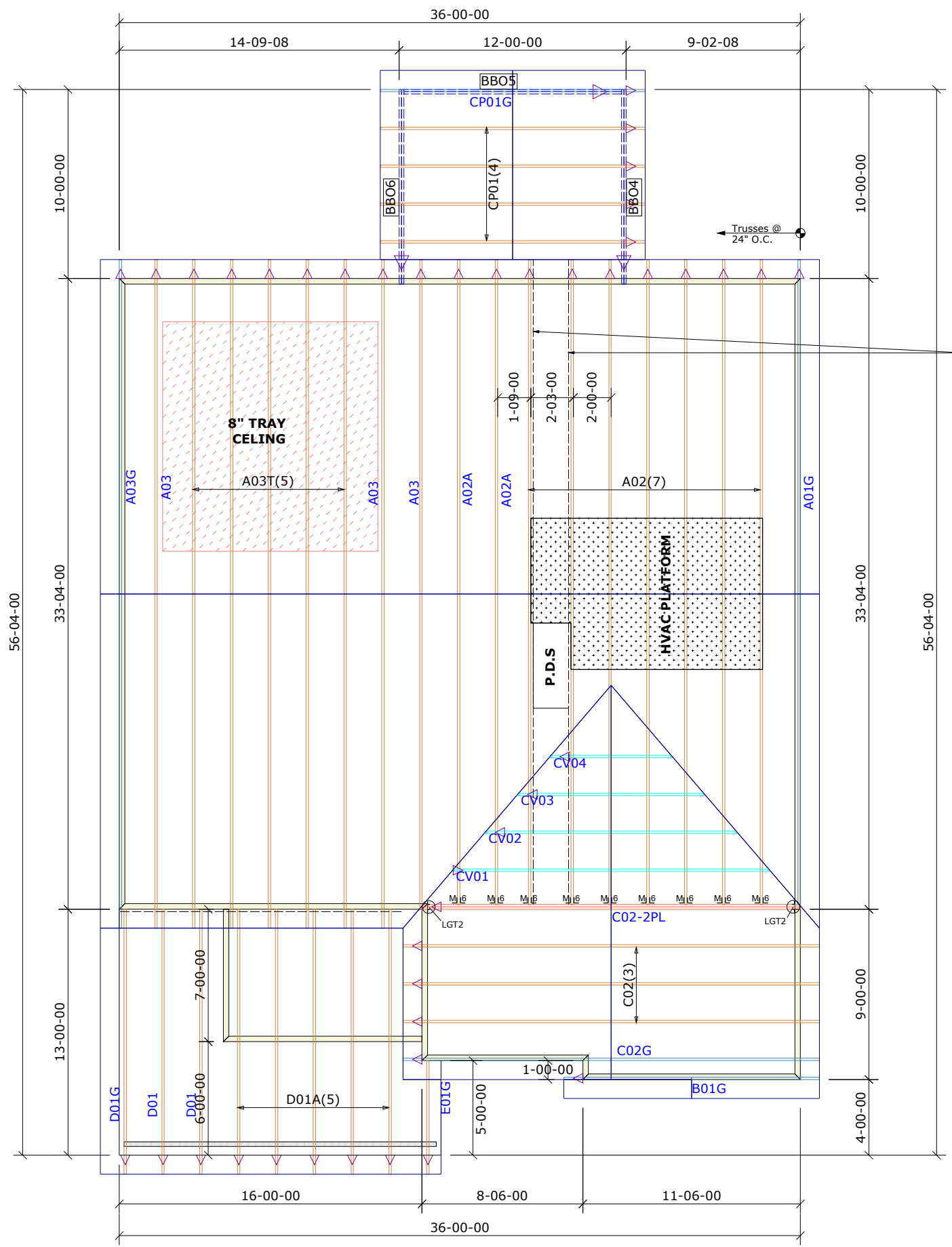
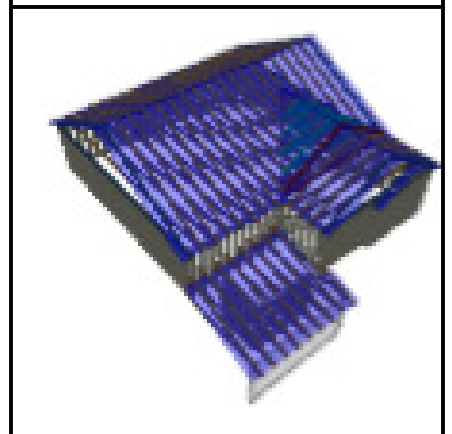
**General Notes:**  
 - Per ANSI/TPI 1-2002 all " Truss to Wall" connections are the responsibility of the Building Designer, not the Truss Manufacturer.  
 - Dimensions are Feet-Inches- Sixteenths.  
 - Trusses are to be 24" o.c. unless noted otherwise (U.N.O.)  
 - Trusses are not designed to support brick U.N.O.  
 - Do not cut or modify trusses without first contacting Builders FirstSource.  
 - Immediately contact Builders FirstSource if trusses are damaged.

**Connection Notes:**  
 - All hangers are to be Simpson or equivalent U.N.O.  
 - Use Manufacturer's specifications for all hanger connections U.N.O.  
 - Use 10d x 1 1/2" Nails in hanger connections to single ply roof girder trusses.

**Floor notes:**  
 - Shift truss as required to avoid plumbing traps.  
 - Installation Contractor and/or Field Supervisor are to verify all dimensions, trap locations, and options prior to installation

**Dimension Notes:**  
 - Drawing not to scale. Do not scale dimensions

△ ◁ ▷ LEFT END OF TRUSS AS SHOWN ON TRUSS DETAIL DRAWINGS ARE INDICATED BY TRIANGLE ICONS.



**SPACE TRUSSES @ 2' O.C. UNLESS A WIDE P.D.S IS GOING TO BE INSTALLED. IF A WIDE P.D.S IS USED, FOLLOW SPECIAL TRUSS SPACING AS NOTED ON LAYOUT, AND ATTACH 2X4 LEDGER TO TOP & BOTTOM CHORDS W/ 12d NAILS @ 16" O.C.**

HANGER LIST		ALL TIE DOWNS H2.5A UNLESS NOTED	
4	LUS24	U	4
9	HTU26	M	6
2	LGT2	J	2
SPECIAL ITEMS LIST			
MISC MATERIAL			
MATTAMY HOMES			
REDWOOD	ELEV:	FARMHOUSE	
PROVIDENCE CREEK			
---	NC	LOT:	75
APPWRIGHT #			
3338120			
CODE: IRC 2015			
LOADING:			
DESIGNED BY: ABS		T.C.D.L.	10 PSF
LAYOUT: ---		B.C.L.L.	0 PSF
L/O DATE: 10/28/2022		B.C.D.L.	10 PSF
REVISION HISTORY		WIND:	
REV1:	XX/XX/XX	M.P.H.	115 MPH
REV2:	XX/XX/XX	EXPOSURE CATEGORY	
REV3:	XX/XX/XX	B (WOODED AREAS/OTHERS)	
PICK TICKET:	---	JOB NO:	---
SALES NO:	---	ACCT NO:	---

HATCH LEGEND	
	ATTIC ROOM
	VOLUME CEILING
	STICK FRAMING