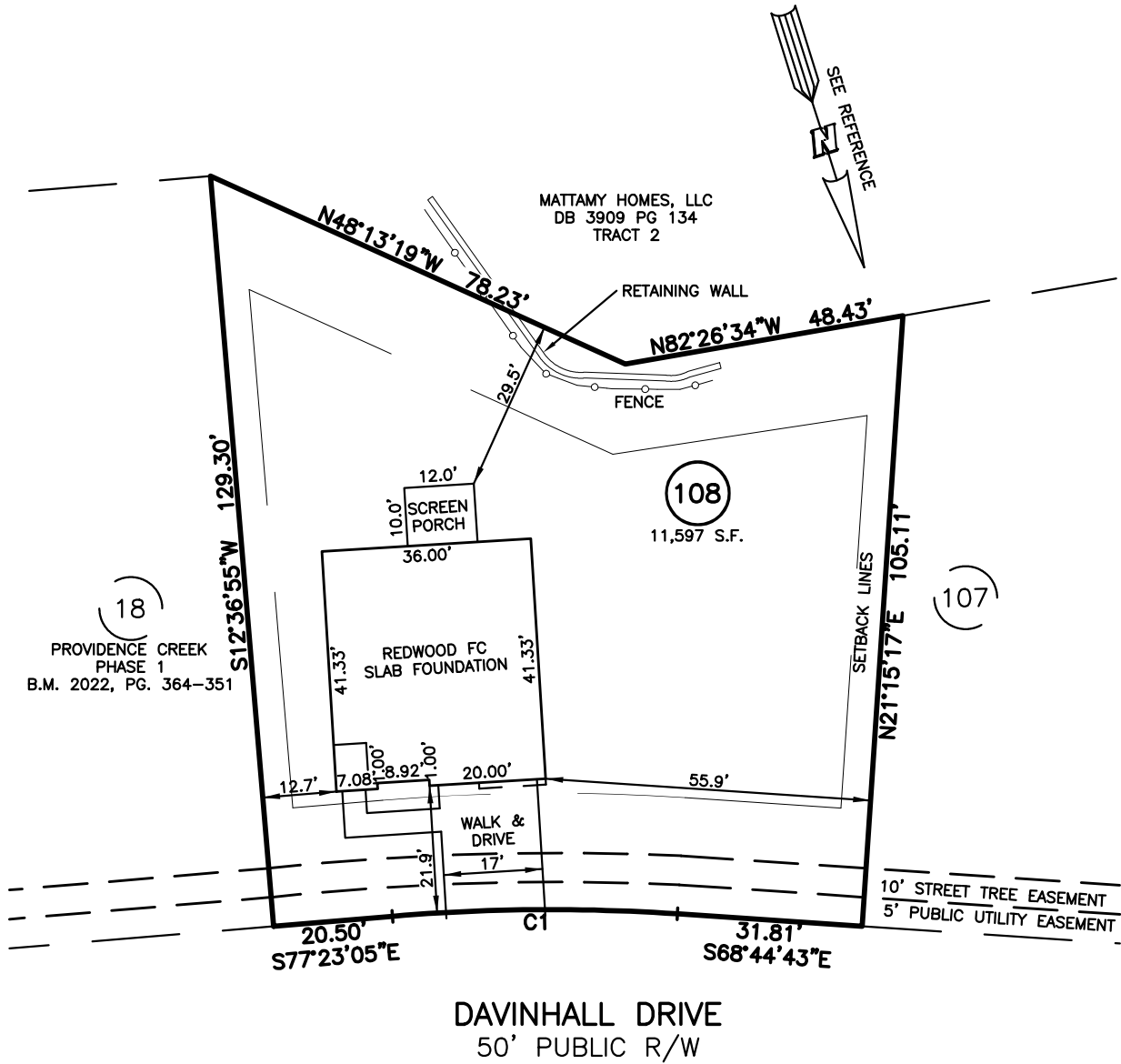


PLOT PLAN FOR  
**MATTAMY HOMES**  
 192 DAVINHALL DRIVE  
 LOT 108, PROVIDENCE CREEK PHASE 2  
 HECTORS CREEK AND BLACK RIVER TOWNSHIP, HARNETT COUNTY, NORTH CAROLINA



CURVE	RADIUS	ARC LENGTH	CHORD LENGTH	CHORD BEARING	DELTA ANGLE
C1	325.00'	49.01'	48.96'	S73°03'54"E	8°38'23"

**LEGEND**

- |  |  |
|--|--|
| <ul style="list-style-type: none"> <li>⊠ AIR CONDITIONER</li> <li>BC BACK of CURB</li> <li>BFP BACK FLOW PREVENTER</li> <li>○ CLEANOUT</li> <li>▣ CURB INLET</li> <li>DHS DRILL HOLE SET</li> <li>ECM EXISTING CONCRETE MONUMENT</li> <li>EDH EXISTING DRILL HOLE</li> <li>EIS EXISTING IRON STAKE</li> <li>EIP EXISTING IRON PIPE</li> <li>EM ELECTRIC METER</li> <li>EPK EXISTING PK NAIL</li> <li>ES ELECTRIC STUB</li> <li>FL FLARED END SECTION</li> <li>⊕ FIRE HYDRANT</li> <li>⊙ FIBER OPTIC PEDESTAL</li> <li>GM GAS METER</li> <li>→ GUY</li> </ul> | <ul style="list-style-type: none"> <li>INV. INVERT</li> <li>IPS IRON PIPE SET</li> <li>IRS IRON ROD SET</li> <li>○ LIGHT POLE</li> <li>MNS MAGNETIC NAIL SET</li> <li>⊕ MANHOLE SANITARY SEWER</li> <li>⊕ MANHOLE STORM SEWER</li> <li>OHW OVERHEAD WIRES</li> <li>PKS PK NAIL SET</li> <li>PNS POINT NOT SET</li> <li>RRS RAIL ROAD SPIKE</li> <li>TEL TELEPHONE PEDESTAL</li> <li>TRANSFORMER</li> <li>CABLE TV PEDESTAL</li> <li>UTILITY POLE</li> <li>WATER METER</li> <li>WATER VALVE</li> <li>YARD INLET</li> <li>( ) FIELD MEASUREMENT</li> </ul> |
|--|--|

**SETBACK INFO**

- FRONT: \_\_\_\_\_ 20'
- REAR: \_\_\_\_\_ 15'
- SIDES: \_\_\_\_\_ 5'
- CORNER SIDE: \_\_\_\_\_ 15'

**REFERENCES:**

BM 2022 PGS 19-23



SCALE: 1" = 30'

**NOTES**

1. THIS SURVEY SUBJECT TO ANY FACTS THAT MAY BE DISCLOSED BY A FULL AND ACCURATE TITLE SEARCH.
2. THIS MAP MAY NOT BE A CERTIFIED SURVEY AND HAS NOT BEEN REVIEWED BY A LOCAL GOVERNMENT AGENCY FOR COMPLIANCE WITH ANY APPLICABLE LAND DEVELOPMENT REGULATIONS AND HAS NOT BEEN REVIEWED FOR COMPLIANCE WITH RECORDING REQUIREMENTS FOR PLATS.

PLOT PLAN  
 PRELIMINARY PLAT- NOT FOR RECORDATION,  
 CONVEYANCE OR SALES

REV CODE: 1.FLIP, 2.PLAN, 3.ROTATE, 4.MOVE, 5.SS  
 6.SEVERAL OF ABOVE, 7.LAND FEATURE, 8. OTHER

DATE: OCT. 27, 2022

F.B. \_\_\_\_\_

RWK, PA

engineering ~ surveying  
 Corporate License: C-1771  
 101 W. Main St., Suite 202  
 Garner, NC 27529  
 Phone (919) 779-4854  
 Fax (919) 779-4056