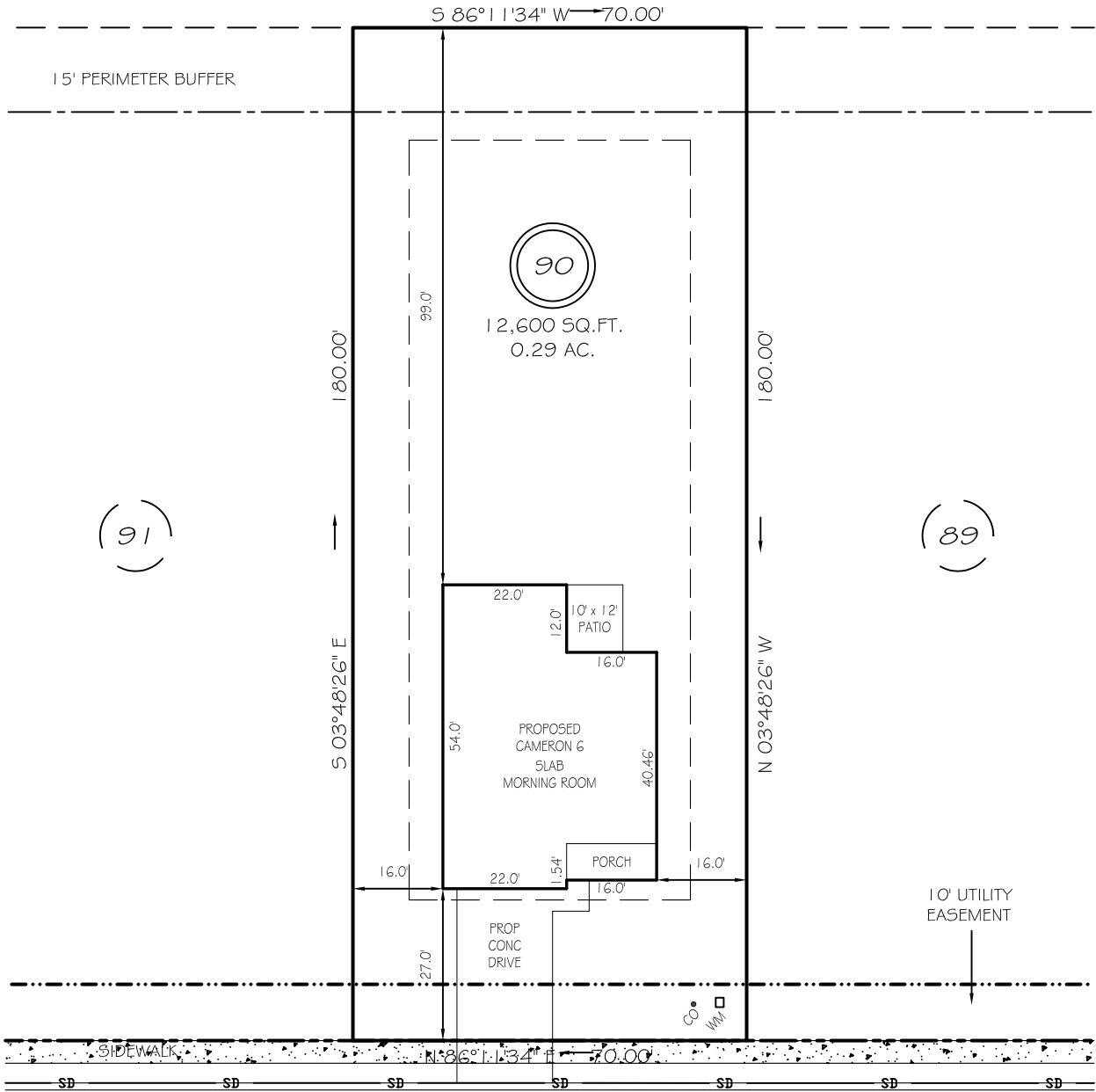


I, MICHAEL P. GRIFFIN, certify that under my direction and supervision this map was drawn from an actual field survey; that the error of closure of the survey as calculated by coordinates is 1: 10,000+; that the area shown hereon was calculated by coordinates.

Witness my hand and seal this day of MONTH 2022.

BK 2022 PGS 203-205
HARNETT CO. REGISTRY

N/F
TRAVIS SCOTT WESTER
ESTATE 92E, PG 105



WINDING CREEK DRIVE

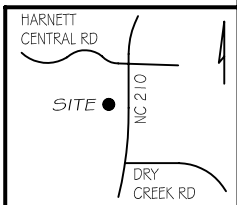
50' PUBLIC RW & UTILITY EASEMENT

SETBACKS

FRONT	25'
REAR	20'
SIDE	10'
CORNER SIDE	20'

LEGEND

EIP	EXISTING IRON PIPE	FES	FLARED END SECTION
IPS	IRON PIPE SET	WM	WATER METER
RW	RIGHT OF WAY	CO	CLEAN OUT
N/F	NOW OR FORMERLY	FH	FIRE HYDRANT
EIS	EXISTING IRON STAKE	CB	CATCH BASIN



P R E L I M I N A R Y
NOT FOR RECORDATION,
SALES OR CONVEYANCE



GRIFFIN LAND SURVEYING, INC.

P. O. BOX 148
FUQUAY-VARINA, NC 27526
(919) - 567 - 1963

PLOT PLAN
FOR
DRB HOMES
THE FARM AT
NEILLS CREEK
LOT 90

43 WINDING CREEK DRIVE
NORTH CAROLINA
HARNETT COUNTY NEILL'S CREEK TWSHP

DRAWN BY KDF

DATE 9/27/22

CHECKED BY MPG

SCALE 1" = 30'