

**General Notes:**

- Per ANSI/TPI 1-2002 all " Truss to Wall" connections are the responsibility of the Building Designer, not the Truss Manufacturer.
- Dimensions are Feet-Inches- Sixteenths.
- Trusses are to be 24" o.c. unless noted otherwise (U.N.O.)
- Trusses are not designed to support brick U.N.O.
- Do not cut or modify trusses without first contacting Builders FirstSource.
- Immediately contact Builders FirstSource if trusses are damaged.

**Connection Notes:**

- All hangers are to be Simpson or equivalent U.N.O.
- Use Manufacturer's specifications for all hanger connections U.N.O.
- Use 10d x 1 1/2" Nails in hanger connections to single ply roof girder trusses.

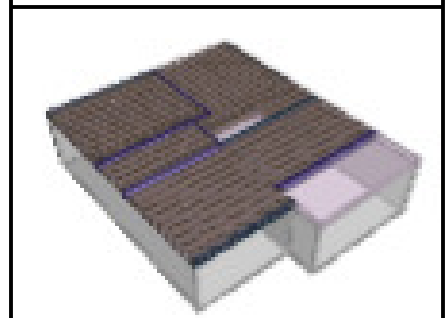
**Floor notes:**

- Shift truss as required to avoid plumbing traps.
- Installation Contractor and/or Field Supervisor are to verify all dimensions, trap locations, and options prior to installation

**Dimension Notes:**

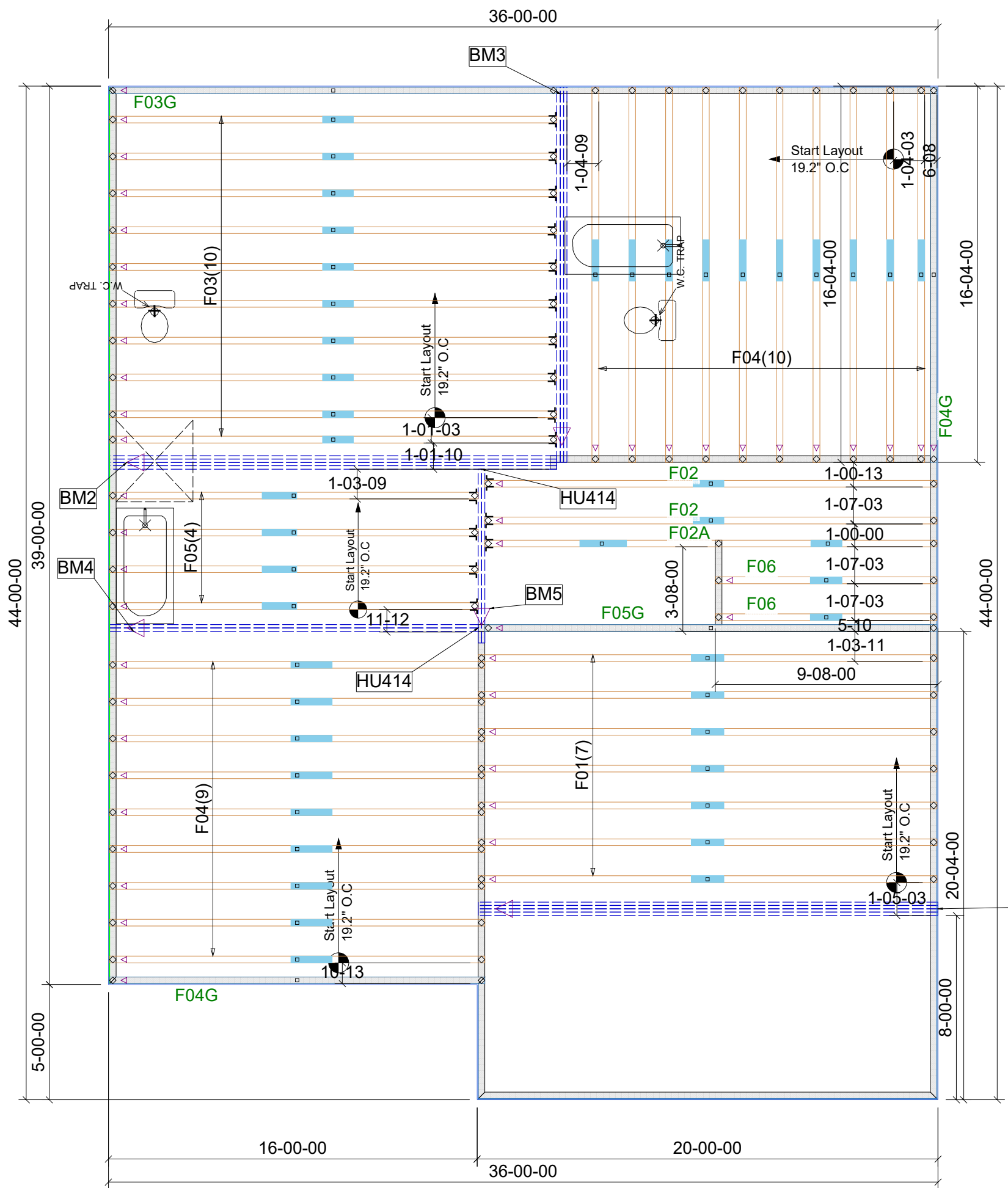
- Drawing not to scale. Do not scale dimensions

△◁▷▷ LEFT END OF TRUSS AS SHOWN ON TRUSS DETAIL DRAWINGS ARE INDICATED BY TRIANGLE ICONS.



USE LUS410 FOR TRUSSES TO BEAM CONECTIONS

- BM1:(4)1.75"x16" LVL 20'LONG X/BOLTS
- BM2:(4)1.75"x14" LVL 20'LONG
- BM3:(3)1.75"x14" LVL 17'LONG
- BM4:(2)1.75"x14" LVL 16'LONG
- BM5:(2)1.75"x14" LVL 8'LONG



HANGER LIST		ALL TIE DOWNS H2.5A UNLESS NOTED	
17	LUS410	J	L
2	HU414	Hj	14
SPECIAL ITEMS LIST			
MISC MATERIAL			
BEQUEST HOMES			
DUNN	ELEV:	FLOOR	
---			
---	NC	LOT:	1
APPWRIGHT #			
---			
<ul style="list-style-type: none"> <li>[OPTION 1]</li> <li>[OPTION 2]</li> <li>[OPTION 3]</li> </ul>		CODE:	IRC 2015
LOADING:			
T.C.L.L.	40 PSF		
DESIGNED BY:	HYS	T.C.D.L.	10 PSF
LAYOUT:	---	B.C.L.L.	0 PSF
L/O DATE:	10/19/2022	B.C.D.L.	5 PSF
REVISION HISTORY		WIND:	
REV1:	XX/XX/XX	M.P.H.	115 MPH
REV2:	XX/XX/XX	EXPOSURE CATEGORY	
REV3:	XX/XX/XX	B (WOODED AREAS/OTHERS)	
PICK TICKET:	---	JOB NO:	---
SALES NO:	---	ACCT NO:	---
HATCH LEGEND			
	ATTIC ROOM		
	VOLUME CEILING		
	STICK FRAMING		