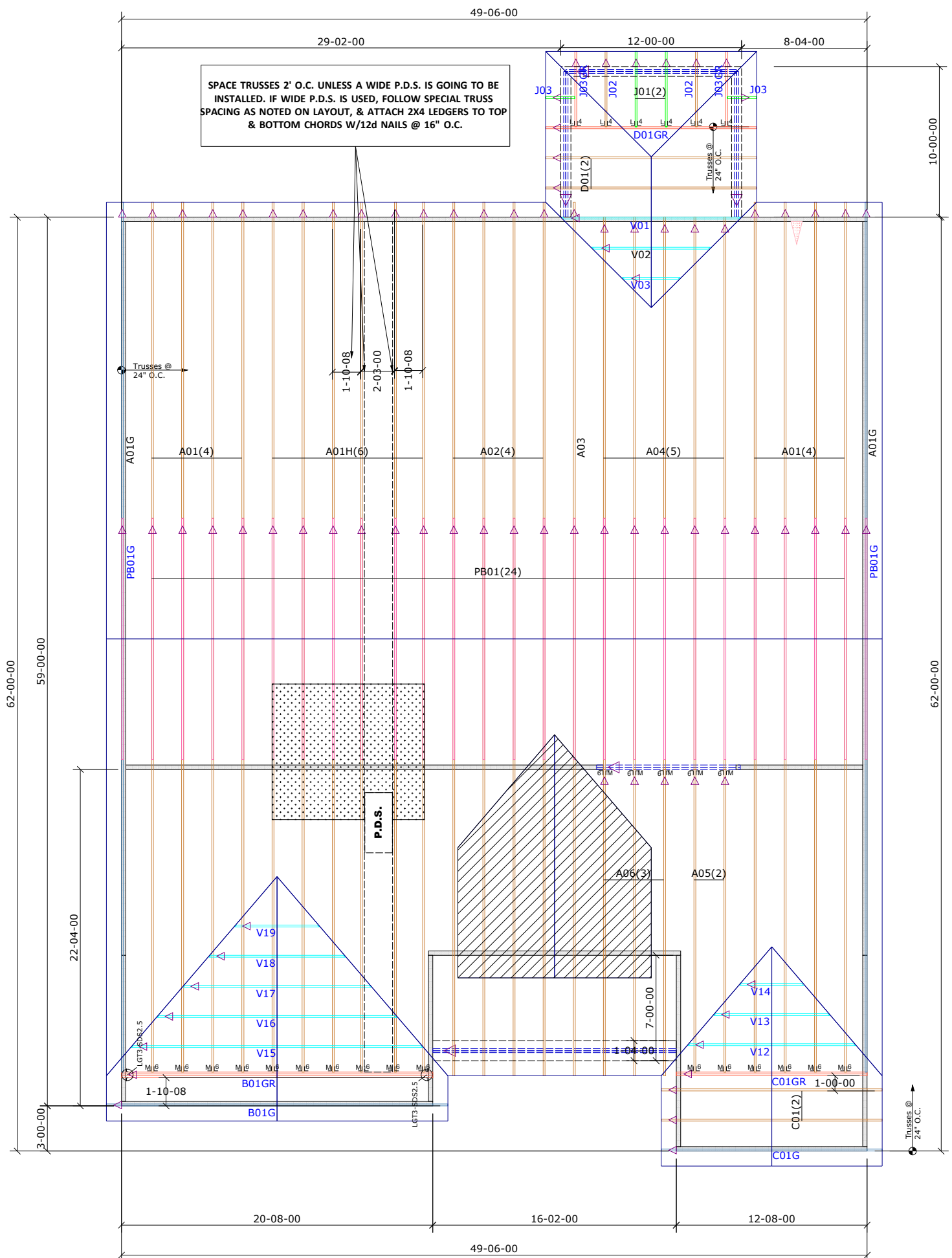
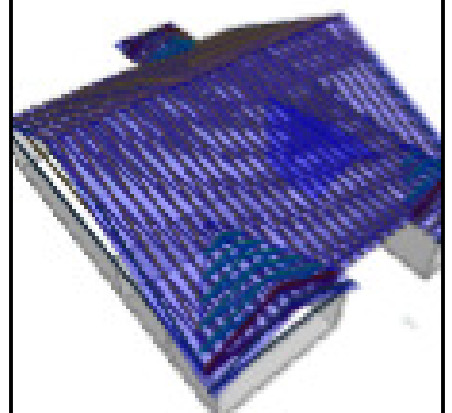


General Notes:
 - Per ANSI/TPI 1-2002 all " Truss to Wall" connections are the responsibility of the Building Designer, not the Truss Manufacturer.
 - Dimensions are Feet-Inches- Sixteenths.
 - Trusses are to be 24" o.c. unless noted otherwise (U.N.O.)
 - Trusses are not designed to support brick U.N.O.
 - Do not cut or modify trusses without first contacting Builders FirstSource.
 - Immediately contact Builders FirstSource if trusses are damaged.
Connection Notes:
 - All hangers are to be Simpson or equivalent U.N.O.
 - Use Manufacturer's specifications for all hanger connections U.N.O.
 - Use 10d x 1 1/2" Nails in hanger connections to single ply roof girder trusses.
Floor notes:
 - Shift truss as required to avoid plumbing traps.
 - Installation Contractor and/or Field Supervisor are to verify all dimensions, trap locations, and options prior to installation
Dimension Notes:
 - Drawing not to scale. Do not scale dimensions

◁ ▷ ▽ LEFT END OF TRUSS AS SHOWN ON TRUSS DETAIL DRAWINGS ARE INDICATED BY TRIANGLE ICONS.



HANGER LIST		ALL TIE DOWNS H2.5A UNLESS NOTED	
21	HTU26	M ₁₆	6
2	LGT3-SDS2.5	J ₁₆	4
6	LUS24	L ₁₄	4

SPECIAL ITEMS LIST	

MISC MATERIAL	

MATTAMY HOMES	
CLEARWATER	ELEV: FRENCH COUNTRY
PROVIDENCE CREEK	
---	NC LOT: 54
APPWRIGHT #	

[OPTION 1]	CODE: IRC 2015
[OPTION 2]	LOADING:
[OPTION 3]	T.C.L.L. 40 PSF
DESIGNED BY: HYS	T.C.D.L. 10 PSF
LAYOUT: ---	B.C.L.L. 0 PSF
L/O DATE: 1/6/2023	B.C.D.L. 5 PSF

REVISION HISTORY		WIND:	
REV1:	XX/XX/XX	M.P.H.	115 MPH
REV2:	XX/XX/XX	EXPOSURE CATEGORY	
REV3:	XX/XX/XX	B (WOODED AREAS/OTHERS)	
PICK TICKET:	---	JOB NO:	---
SALES NO:	---	ACCT NO:	---

HATCH LEGEND	
	ATTIC ROOM
	VOLUME CEILING
	STICK FRAMING